

New Emergency Services Facility Project

Request for Proposals—Engineering and
Architectural Services

Richland County, WI

October 23, 2020

JEWELL

associates engineers, inc.

Engineers - Architects - Surveyors

October 23, 2020



Darin Gudgeon
Richland County Ambulance Service
PO Box 251
Richland Center, WI 53581

Re: Request for Proposals for Engineering/Architecture Services Richland County Emergency Services Facility

Dear Mr. Gudgeon,

Thank you for the opportunity for Jewell Associates Engineers, Inc. (Jewell) to provide our proposal for design services for the Richland County Emergency Services Facility. I have enjoyed working with the committee on the planning studies leading up to this project. We look forward to working with you on the design of the building and site.

Jewell is an award-winning professional architecture, engineering, and surveying consulting firm based in Wisconsin with offices in Spring Green and Wisconsin Rapids. Our team has significant previous experience with provision of similar services for Wisconsin counties and municipalities.

For this project, we have assembled a qualified team of professionals. Our multi-disciplinary team consists of registered architects and professional engineers. We have previous experience both with emergency services facilities and the groundwork that must be developed in the early stages of a project through a comprehensive assessment of present and future space needs.

In recent years, our team has worked with various public and private organizations in the planning, design, and construction of facilities, including fire department and emergency medical services stations, highway department offices, maintenance and equipment repair shops, salt storage buildings, truck storage buildings, manufacturing, warehouses, and food processing facilities. Many of these facilities housed multiple departments and required extensive planning and coordination to ensure the satisfaction of all parties.

Enclosed, please find two (2) bound printed copies. A PDF file of our proposal has been sent via email. Should any questions arise concerning the material submitted, please feel free to contact me. We look forward to the opportunity to work with you on this project.

Sincerely,
Jewell Associates Engineers, Inc.

A handwritten signature in black ink that reads "Paul Kardatzke". The signature is fluid and cursive, with the first name "Paul" and last name "Kardatzke" clearly legible.

Paul Kardatzke, Architect
AIA, NCARB, LEED-AP

Office: (608) 588-7484
Direct: (608) 459-6020
Mobile: (608) 574-7053
paul.kardatzke@jewellassoc.com
www.jewellassoc.com

Table of Contents

Section 1 Jewell Qualifications

Profile

Project Experience

Project References

Section 2 Design Team and Qualifications

Resumes

Section 3 Proof of Insurance and Fee

Proof of Insurance

Fee for Services

Jewell Billing Rate Schedule

Section 4 References

1—Jewell Qualifications

Profile

In 1993, Jewell & Associates, Inc. was formed by Greg Jewell to provide complete engineering and land surveying services. The company's growth led to expanding its services to include architectural design work in 1996. With continued steady growth through the years, Jewell & Associates, Inc. has expanded to provide professional services to a diverse and growing group of clients and a wide range of projects.

Today, Jewell Associates Engineers, Inc. (Jewell) is a professional engineering, architecture, and surveying company based in Spring Green, Wisconsin with offices in Wisconsin Rapids. Our staff consists of professional and technical staff members which includes: professional engineers, architects, land surveyors, an interior designer, technical and administrative staff. The Jewell team is diverse and multifaceted in their areas of expertise to better accommodate the needs of our clients. Jewell is owned by nine employees including the six members of the Board of Directors: Greg Jewell (PE PLS), Paul Kardatzke (AIA NCARB LEED AP), Jennifer LaBatt, Fred Gruber (PE PLS), Scott Whitsett (PE), and Ellery Schaffer (PE).

Relevant Expertise

Jewell is well respected in the engineering, land surveying, and architectural communities. Over the years, our company has grown to become a leading regional provider of transportation design, civil and structural engineering, and architecture. Our surveying and land planning services provide developers and local units of government with the tools they need to move their projects forward from the planning stages to design and construction. Site design, stormwater management, floodplain studies, flood control, water systems, and wastewater treatment improvements are among our other areas of expertise. We also offer grant writing and public funding assistance services to local communities. The company's vision is to continue to expand, improve, and grow in these areas.

The success of our design process is rooted in the process of integrating client concerns and needs with code requirements and design objectives to develop project goals. The plans developed from these project goals are the result of input from the project stakeholders, site specific information, and engineering experience, all coordinated into a cohesive design concept with the architect. As the design is developed, the initial project goals are used as a guide to keep the objectives of the project foremost. Experienced Jewell field personnel supply all the inspection and construction management services necessary to assure projects are built according to plan, on schedule, and within budget.

The following is a list of services Jewell provides in-house:

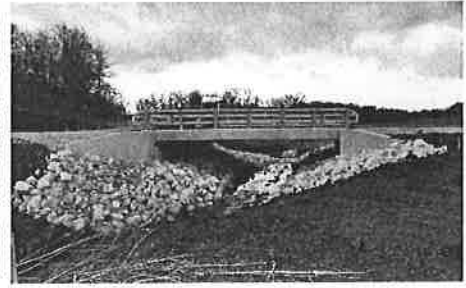
- Architecture
- Structural Engineering
- Transportation Engineering
- Municipal Engineering
- Surveying & Platting
- Site Design
- Construction Oversight
- Interior Design
- Civil Engineering
- Traffic Engineering
- Water Resources Engineering
- Utility Design
- Land Planning

Architecture & Structural

- Government Buildings
- Educational Institutions
- Churches
- Libraries
- Professional Offices
- Healthcare Facilities
- Recreational Facilities
- Remodeling
- Additions
- Mixed Use Buildings
- Industrial Plants
- Dairy Processing Plants
- Restaurants
- Food Processing Plants
- Convenience Stores
- Agricultural Buildings
- Bridges & Culverts
- Laboratories
- Residential
- Community & Specialty Stores
- Commercial & Retail Buildings
- Equipment Support Structures

Relevant Experience

- Master Planning
- Space needs Assessments
- Schematic Design
- Final Design
- Permit Preparations
- State Plan Submittals
- Energy Saving Alternatives
- Site Plans
- Location Assessments
- Structural Inspections
- Foundation Design
- Falsework Design
- Roof Systems
- Insurance Investigations



The Architecture & Structure Division of Jewell Associates provides creative and functional design and inspection services for a wide variety of projects, including government facilities, industrial plants, restaurants, retail stores, office buildings, churches, schools and private residences, in addition to transportation. Our clients include local, county and state governments, industries, commercial developers, retail business and restaurant owners, school systems, churches and homeowners. We work closely with clients to define project goals at the outset and provide design alternatives for evaluation during the design development phase, a methodology which produces exceptional design results.



JEWELL

associates engineers, inc.

Engineers - Architects - Surveyors

Site Planning & Design Services

Design Services

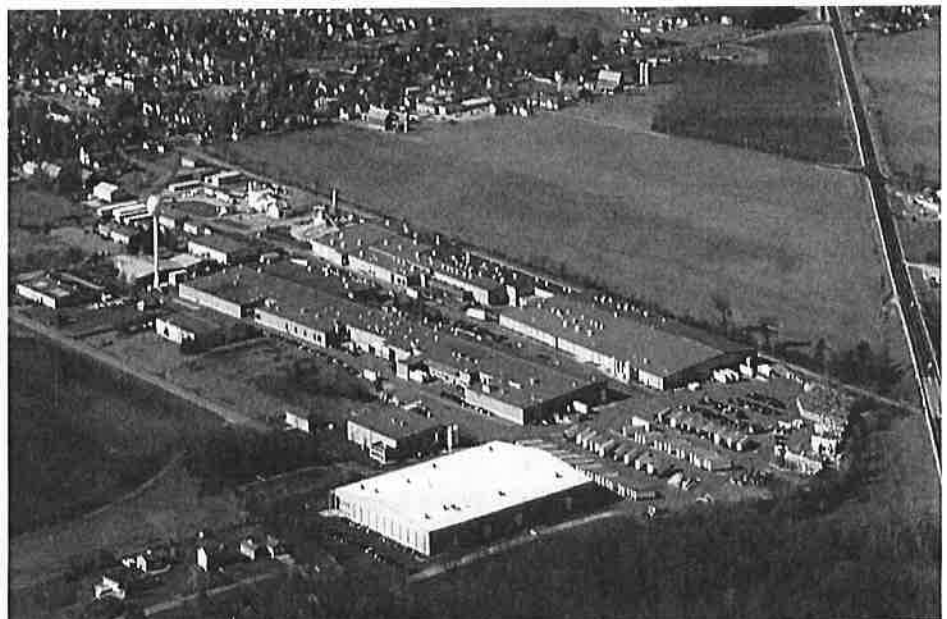
- Topographic Survey
- Drainage Design
- Stormwater Management
- Roadway Design & Layout
- Parking Design
- Utility Design & Coordination
- Agency Coordination
- Railroad Spur Design
- Permit Process
- Construction Layout
- Construction Oversight

Relevant Experience

- Crawford Co. Admin. Building
Prairie du Chien, WI
- Cardinal Glass Industries
Spring Green & Mazomanie, WI
- United States Post Office
Spring Green, WI
- SWCAP Building, Dodgeville, WI
- Frontier Servco FS Cooperative
Spring Green, WI
- Meister Cheese Company
Muscodia, WI
- S.G. Community Church
Spring Green, WI
- S.G. Community Library,
Spring Green, WI
- The Prairie Development
Spring Green, WI
- Maple Leaf Cheese Cooperative
Juda, WI



Jewell Associates professional engineers provide site planning and design services for industry, government agencies, commercial and residential developers, churches, libraries and educational institutions.



Fire Department & Emergency Medical Services Station

Spring Green, WI

Project Data

Project Cost
\$2,200,000

Area
19,500 SF

Completion
2008

Project Team

Project Manager
■ Fred Gruber
Project Engineer
■ Ed Lilla
Project Engineer
■ Todd Deibert
Project Engineer
■ Michael Mertens
Surveyor
■ Wes Kraemer

Architect
■ Paul Kardatzke



Project Description

The Spring Green Area Fire Protection District and Emergency Medical Service contracted with Jewell Associates to provide stormwater management, site design and structural engineering for their new facility.

The Jewell structural team provided structural design for the 19,500 square foot building. The selection of structural systems integrated with the architectural design to create a cost effective, durable and easy to maintain building. Load bearing integrally colored masonry walls were used at the apparatus bays, storage areas, and hose drying tower. Economical steel bar joists form the roof structure. The west end of the building, providing offices and meeting room spaces, is constructed with metal stud walls and roof trusses.

The architect for this project, Paul Kardatzke, currently heads the Jewell Associates architecture team. Paul designed the building and worked closely with the representatives of the fire district from initial planning phases through construction.

Services

- Structural Design
- Site Design
- Stormwater Management
- State Submittal
- Permits
- Plans & Specifications



JEWELL
associates engineers, inc.

Adams County Fire District Fire Station

Adams, WI

Project Data

Construction Cost
\$1.4 million

Area
13,945 SF

Completion

2018

Project Team

Project Architect
■ Paul Kardatzke

Architect
■ Andrea Ring

Civil Engineer
■ Mike Bisbach

Interior Design
■ Kelly Anliker

Client Contact

William Euclid
Adams County Fire
District
105 N. Main Street
Adams, WI 53910



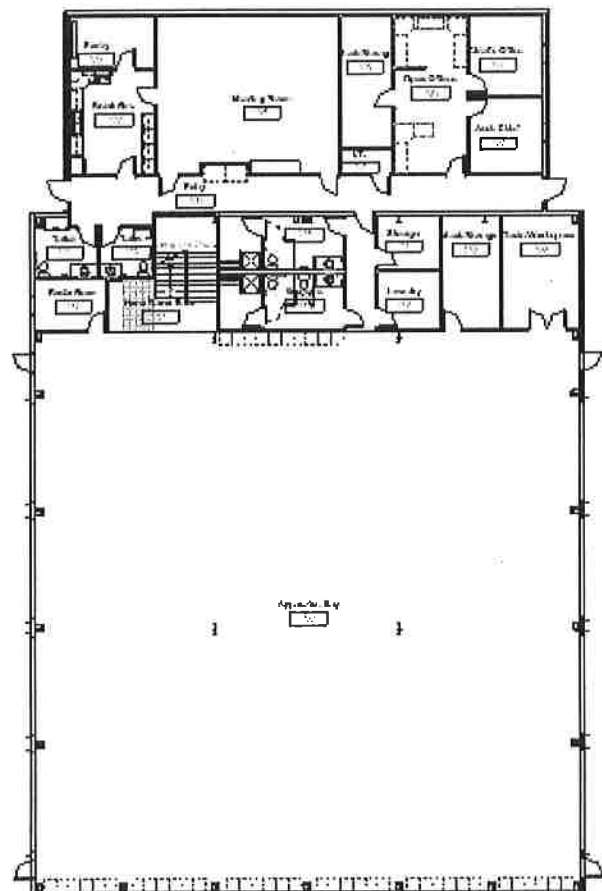
Project Description

Adams County Fire District contracted with Jewell Associates to assist in the planning and design of a new fire station. The project consisted of a large meeting room, offices, break room, mezzanine and a four stall drive-thru apparatus bay.

The Jewell team worked very closely with the Fire District in designing an updated facility to meet their current needs and plan for expected expansion. The final product provides a pragmatic solution to accommodate multiple functions while ensuring safety and security for operational areas.

Services

- Architecture
- Structural Engineering
- Interior Design
- Permits
- Plans & Specifications
- Bidding Services
- Construction Oversight



Sauk Prairie Ambulance

Sauk Prairie, WI

Project Data

Construction Cost

\$1.3 million

Area

11,180 SF

Completion

2016

Project Team

Project Architect

■ Paul Kardatzke

Architect

■ Andrea Ring

Civil Engineer

■ Mike Bisbach

Interior Design

■ Kelly Anliker

Client Contact

Robert Koch

Sauk Prairie

Ambulance

110 Washington St.

Sauk City, WI 53583

608-643-4183



Project Description

Sauk Prairie Ambulance contracted with Jewell Associates to assist in the planning of the remodeling and redesign of their existing building. The project consisted of complete renovation of the existing building which included partial demolition, redevelopment of the existing space, exterior modifications and the addition of a four stall double entry bay building.

The Jewell team worked very closely with the Ambulance Commission in designing an updated facility to meet their needs and expectations. Jewell also subcontracted JDR Engineers of Madison for the mechanical, plumbing, and electrical design and Ken Saiki Design for the landscaping.

Services

- Architecture
- Structural Engineering
- Interior Design
- Permits
- Plans & Specifications
- Bidding Services
- Construction Oversight



JEWELL
associates engineers, inc.

Fire Station Feasibility Study

Town of Saratoga, Wood County, WI

Project Data

Construction Cost
N/A

Completion

2011

Project Team

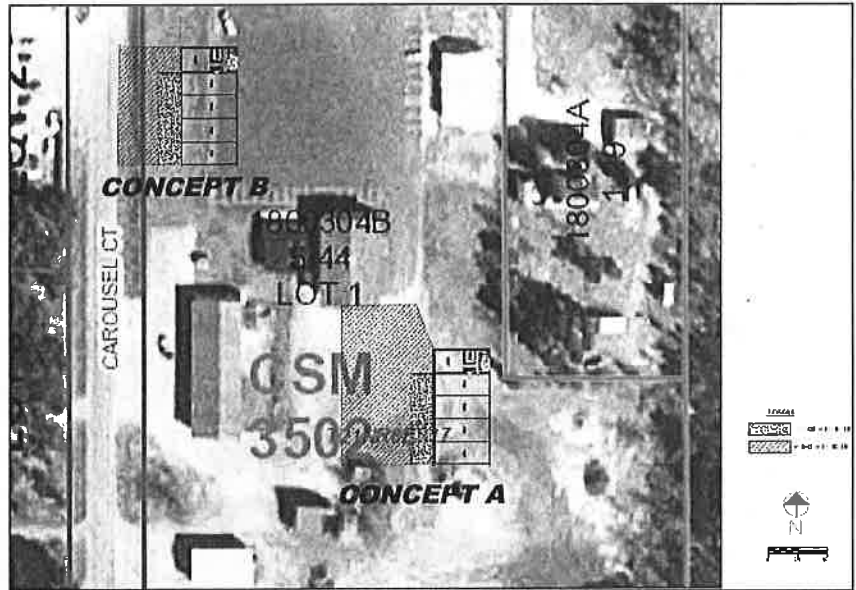
Project Manager
■ Greg Jewell, PE

Land Planner

■ Jason Paukner

Structural Engineer

■ Michael Mertens



Project Description

The Town of Saratoga was investigating options for providing fire fighting emergency services. To assist in making this decision, the Town contracted with Jewell Associates Engineers, Inc. to develop a Fire Station Feasibility Report. The report is evaluated options and provided data and analysis to enable Town officials to make an informed decision on whether to pursue establishing their own fire department or contracting with adjacent town or municipalities for fire protection services.

Services

The study and report included the following documents:

- Site Analysis – This report includes mapping and information on where the Town should locate the fire protection equipment and apparatus. The proposed location analysis examined response times, access, distance, ISO Rating, and property.
- Space Needs, Start-Up Needs, & Cooperative Agreement – This report included information on how Jewell worked with intended users of the building to quantify the proposed space needs. This analysis includes looking at the existing Town building to see if it could be remodeled for storage of fire protection equipment or the possibility of a new building. The report also included a summary and feasibility of a cooperative agreement with one of three neighboring fire districts to equip, staff, and operate a satellite fire station in the Town.
- Costs and Funding – This report included the estimated costs to remodel the existing building, construct a new building, and to equip, staff, and operate a fire department within the Town. The estimated cost information was analyzed, and Jewell illustrated the effect on the Town budget and total cost to taxpayers compared to the current cost of providing fire protection coverage. Potential fees and funding opportunities for use by the Town for creating its own Fire Department were also identified.

Client Contact

Terry Rickaby -
Chairperson
Town of Saratoga
715-886-4097

Roxbury Town Hall

Sauk City, WI

Project Data

Construction Cost
\$745,000

Area
4,500 SF

Completion

2018

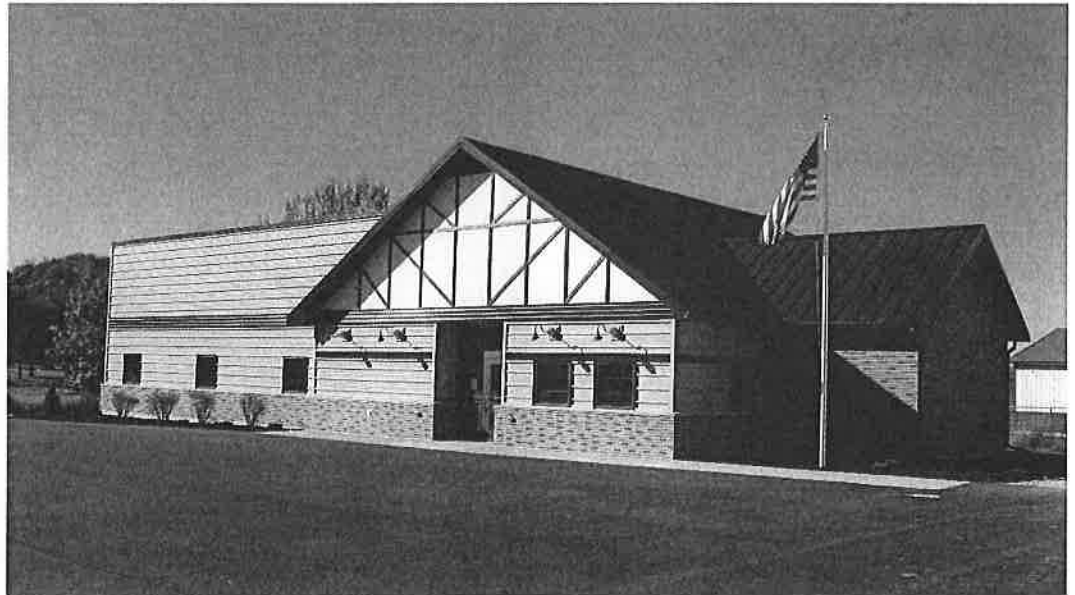
Project Team

Project Architect
■ Paul Kardatzke

Architect
■ Andrea Ring

Civil Engineer
■ Mike Bisbach

Interior Design
■ Kelly Anliker



Project Description

The Town of Roxbury contracted with Jewell Associates to assist in the planning of the design of their new town hall building. The project consisted of demolition of the existing building and the design of a 4,500 sf, wood framed building with a meeting room and office spaces for the town staff.

The Jewell team worked very closely with the Town of Roxbury in designing an updated facility to meet their needs and expectations. Jewell also subcontracted with Andhole Engineering for the mechanical design and Hanson Design Group, LLC for electrical design.

Services

- Architecture
- Structural Engineering
- Interior Design
- Permits
- Plans & Specifications
- Bidding Services
- Construction Oversight

Client Contact

Town of Roxbury
7121 Kippley Road
Sauk City, WI 53583
608-643-2861

JEWELL
associates engineers, inc.

2—Design Team and Qualifications

The following resume's identify the key project team members who will work on the project at every stage of the project development. This team includes professional Architects and Engineer's who bring years of diverse experience to this project which will yield excellent results as we work to find the pragmatic solutions that will meet the program needs and enhance the community for many years of services.

Here is a summary of key Project Team members for Jewell Associates:

Paul Kardatzke—Project Architect

Paul will lead the design team at Jewell and coordinate design work of consultants as the project moves forward. Paul is a licensed architect whose background in engineering results in an individual uniquely qualified to understand and communicate both the aesthetic and pragmatic requirements of building projects. During his professional career, he has demonstrated an ability to work on a wide variety of project types with a full range of construction systems and materials. He routinely performs as the design and project architect on projects, taking responsibility for assessing project requirements, evaluating building code and zoning impacts, design and presenting building concepts to owners and oversight authorities, overseeing preparation of construction documents and assisting owners with bidding and construction contract administrations. Paul was the architect for the 19,500 s.f. Fire Department and EMS facility in Spring Green, WI. The building included a conference room, kitchen, offices, vehicle bays, training rooms, communications control room and a small fitness center.

Andrea Ring—Architect

Andrea will assist in the production of all drawings and specifications. Andrea has experience on a wide variety of project types.

Michael Mertens—Structural Engineer

Michael will lead the structural design portion of the project. Michael has a wide range of experience including significant public sector projects related to transportation sector clients. His work with Highway County Departments related to bridge inspections and facilities evaluations is documented in his attached resume.

Todd Deibert—Civil Engineer

Todd will lead the site design portion of the project. Todd has experience in site and stormwater design and plumbing design.

The following section also includes resume's for key staff scheduled to work on this project.



Paul J. Kardatzke, Architect
Senior Project Manager
AIA, NCARB, LEED AP



Mr. Kardatzke is a licensed Architect whose background in engineering results in an individual uniquely qualified to understand and communicate both the aesthetic and pragmatic requirements of building projects. During his professional career, he has demonstrated an ability to work on a wide variety of project types with a full range of construction systems and materials. He routinely performs as the design and project architect on projects, taking responsibility for assessing project requirements, evaluating building code and zoning impacts, designing and presenting building concepts to owners and oversight authorities, overseeing preparation of construction documents, and assisting owners with bidding and construction contract administration.

COMMUNITY SERVICES

EDUCATION

*Master of Architecture,
Frank Lloyd Wright
School of Architecture*

*Bachelor of Science
Civil Engineering,
University of Illinois
at Chicago*

*Master of Science in
Project Management,
UW - Platteville*

EXPERIENCE:

29 years

REGISTRATIONS

*Architect
IA, IL, MI, MN, OH, WI*

PROFESSIONAL & COMMUNITY

ACTIVITIES:

*American Institute of
Architects*

*Spring Green Area
Arts Coalition Board
Member*

Spring Green:

*Energy Independent
Community Task Force*

Sauk-Prairie Ambulance Facility, Prairie du Sac, WI. Design of the remodeling and addition of the new home for the Sauk-Prairie Ambulance department. The remodeling provided spaces for offices, training, and living quarters. The addition provides three drive-thru bays for ambulances as well as storage, lockers, and other service areas.

Fire Department & EMS Facility, Spring Green, WI. Paul served as the Architect for this 19,500 SF facility which included vehicle bays, training rooms, communications control room, and a small fitness center, kitchen and overnight accommodations for on-duty EMTs. A parade truck bay in the front of the building features attractive space for the display of local historical interest which commemorates the service of the fire department to the community. Also prepared facility manual for building and equipment.

Brewer Memorial Library Remodeling, Richland Center, WI. Paul served as the Architect for remodeling and modernization of the library interior to improve efficiency of work areas and patron services. Project also included addition of an on-site parking lot.

Spring Green Community Library, Spring Green, WI. Paul served as the Project Manager for the new 6,780 SF library building designed by Charles Montooth of Taliesin Architects. Building includes main collection/circulation area, children's department, reading areas, computer stations, offices, archives room, and large community meeting room.

Fire Station Addition, Lone Rock, WI. Paul served as the Architect for a free-standing addition to the local fire station to house additional fire-

fighting equipment.

US Post Office, Spring Green, WI. Paul served as the Architect and he provided custom design of new village post office to meet community design standards and US Postal Service standards.

INDUSTRIAL/FOOD PROCESSING

Wollersheim Winery, Sauk City, WI. Paul served as the Project Manager for master planning for expansion of existing Winery to include new distillery operations, structural renovation of historic buildings for current activities and incorporate stormwater management for entire complex. Architect for 25,000 SF addition which includes new distillery operations, retail space, barrel aging, bottling and shipping docks.

Meister Cheese Company Additions, Muscoda, WI. Paul served as the Architect for the 15,000 SF addition in 2002 and a 14,500 SF addition in 2010. Additions included a break room, office, increased production space, a drive-thru milk intake and a silo alcove.

Meister Cheese Company Wastewater Treatment Facility, Muscoda, WI. Provided building, tank and site design for new industrial wastewater treatment facility.

Cardinal Glass Addition, Amery, WI. Paul served as the Architect for the additions to manufacturing production and office areas.

Cardinal Glass Additions, Spring Green, WI. Paul served as the Architect for several additions to glass manufacturing facilities. Project also including shipping/loading docks, offices, break room and warehouse space.

Shullsburg Creamery Addition, Shullsburg, WI. Paul served as the Architect for 8,376 SF addition to existing creamery building. The project also included grading, erosion control, utilities, schedules and details. Architecture plans included floor plan, ceiling plan, roof plan, exterior elevations, building sections, stair sections, door schedule, wall and roof schedules.

Ritchie Implement Retail Addition, Cobb, WI. Paul served as the Architect for the addition and remodeling of the retail space to create an attractive display space for large equipment and new office and training spaces.

Ritchie Implement Shop Addition, Cobb, WI. Paul served as the Architect for the addition to the service building to create more space for implement and tractor maintenance and repair.

OFFICES

MH Telecom Offices & Training Center, Dodgeville, WI. Paul Architect for new three-story office building in historic downtown district. The building accommodates office space, training rooms, telecommunications switching equipment, and backup power generation. Exterior was designed to be compatible with downtown streetscape design and historic district standards.

CESA 3 Offices Addition, Fennimore, WI. Architect for design of addition to office and training center for Consolidated Educational Services Agency #3. The addition included a large conference room with and operable partition to allow for flexible use of the space.

City Hall, Prairie du Chien, WI. Architect for the conversion of an existing downtown retail store into a multi-story facility for City offices and community meeting space.

Crawford County Administration Building, Prairie du Chien, WI. Project manager for the design and construction of the new 60,000 SF multi-story Crawford County Administration Building.

Crawford County Courthouse Master Plan, Prairie du Chien, WI. Architect for development of the Master Plan and Historic Structure Survey for the Crawford County Courthouse. The plan focused on anticipating mechanical system upgrades and remodeling to accommodate office relocations and building upgrades for handicapped accessibility, energy efficiency and security.

Iowa County Courthouse Security Plan Study Courtroom Remodeling, Dodgeville, WI. Paul served as the Architect for the courtroom project. Paul created measured drawings of existing spaces and worked closely with Courthouse staff to determine building's functional needs and historical uses of space. The recommendations were to utilize all space for private and public situations.

MEDICAL

Mineral Point Airport Air Ambulance, Mineral Point, WI. Paul served as the Project Manager for the project in Mineral Point, WI. The project consisted of a design that included approximately 2,000 SF two story office and storage built-out in an existing hanger at the Mineral Point Airport.

SWCAP Facility Dental Clinic Addition, Dodgeville, WI. Architect for 8,000 SF addition to the Southwest Wisconsin Community Action Program

building in downtown Dodgeville. The addition accommodates a new dental clinic and expansion of the existing medical clinic.

PUBLIC WORKS

Columbia County Cambria Shop and Salt Storage, Cambria, WI.

Design of new 11,000 SF shop and adjacent salt storage building constructed on the site of the existing county shop and salt storage facility. The new buildings and site development provide improved energy efficient facilities for the storage of vehicles and road salt. Site development included features that reduce the aggregate runoff from the site. A space between the county shop and county/state salt shed was created to provide space for the storage of road sand and a brine tank. This space was covered with a roof for open air storage.

Crawford County Highway Department, Seneca, WI. Paul provided building and landscape design for this relocation of the Crawford County Highway Department from flood-prone Gays Mills. Jewell provided architecture, site design and master planning services for the new eight-acre Highway Department complex. The four buildings included highway department offices, maintenance and equipment repair shop, a salt storage building, and a truck storage building. This project includes wash bays, hoists, cranes, vehicle storage and equipment storage. The total square footage of all buildings is 25,550 SF.

Well House #1, Spring Green, WI. Paul served as the Architect for the 760 SF replacement for existing well house. Design emulated key features of the previous building.

City Hall Remodeling, Dodgeville, WI. Paul served as the architect for the minor remodeling of City Hall to improve handicapped accessibility and customer service.

Police Station Remodeling, Dodgeville, WI. Paul served as the Architect for the remodeling of the 4,000 SF Police Station in downtown district.



Andrea Ring, Architect
Senior Project Manager
AIA



Andrea Ring is a licensed Architect with extensive experience in the design of commercial and industrial buildings and government facilities. She is experienced with the full spectrum of residential architecture, ranging from single and multi-family homes to apartment complexes, senior housing developments and fraternity houses. She is familiar with a wide range of construction systems and materials and has been project architect and design architect on many noteworthy projects. A representative sampling of her projects is listed below.

GOVERNMENT

Roxbury Town Hall, Roxbury, WI. Andrea served as Architect on a new town hall. She produced construction documents and Revit drawings.

Fire Department & EMS Facility, Spring Green. Andrea assisted the Project Architect on the construction documents for a fire station.

Crawford County Administration Building, Prairie du Chien. Andrea assisted the Project Architect on construction documents for a 60,000 sf multi-story administration building.

Crawford County Courthouse Master Plan, Prairie du Chien. Andrea assisted the Project Architect in drawing building upgrades and remodeling for office relocations.

Iowa County Courthouse, Dodgeville, WI. Andrea assisted the Project Architect on schematic design drawings.

Sauk Prairie Ambulance, Sauk Prairie, WI. Andrea served as an assistant with the Project Architect for the renovation of the Sauk Prairie Ambulance building. Renovation included partial demolition, redevelopment of existing space, exterior modification and the addition of a four stall double entry bay building.

MIXED USE

Parman Place, Madison, WI. Andrea served as the Project Architect for an 18 unit 3 story building with commercial space at the ground floor.

Columbia County Highway Shop & Salt Storage Facility, Cambria, WI. Andrea served as the Project Architect for the facility in Cambria, WI.

EDUCATION

*Bachelor of Science,
Architectural Studies,
UW-Milwaukee*

PROFESSIONAL REGISTRATIONS:

Architect - WI

EXPERIENCE

16 years

The project consisted of 10,000 SF that contained office space, bathrooms, and a garage.

STH 136 Salt Storage Facility, Sauk County, WI. Andrea served as the Architecture Technician Manager for the construction project of a 7,000 SF salt storage shed located in Sauk County, WI. The Jewell team provided engineering services, specifically prepared the PS&E.

White Oak Savanna, Dodgeville, WI. Andrea served as the Architect for the transitioning farming property project which included a kitchen building, barn reconstruction and house remodel. The property would be used for special events (weddings, receptions, reunions, parties, meetings, conferences, class reunions, banquets, dances, and other special events.)

Sand Valley – Clubhouse, Rome, WI. Andrea served as the Architectural Project Manager for the Clubhouse structure project in Rome, WI.

Neesvig Windsor Facility Addition, Windsor, WI. Andrea served as the Architectural Project Manager for the facility addition in Windsor, WI. The addition was 60' wide x 22' long, steel frame construction with metal clad insulated with panels, fully sprinklered, concrete slab floor, with truck docks, dry storage, locker rooms, cooler storage, and fish processing area.

Sub-Zero Harvest Haven (Site), Fitchburg, WI. Andrea served as the Architectural Project Manager for the Sub-Zero Wolf Harvest Haven Building and site development in Fitchburg, WI. Jewell provided a complete topographic survey which included location of all utilities, adjacent streets and existing entrances and other existing features. Jewell team also developed a grading and site plan for the entire development. In addition, they provided all design for water and sewer services. Architectural services were also provided, and include the following: drawings showing details for structural connections, drawings that show dimension, performance and loading requirements.

COMMERCIAL

Adams County Fire Station, Adams, WI. Andrea worked as an Architect for a 14,000 SF fire station with office space and an apparatus bay.

Animart, Waunakee, WI. Andrea was the project architect for a building with an Animart Pet Store and additional retail space.

Culvers Restaurant Beaver Dam, WI. Andrea was project architect for a remodel and addition.

Culvers Restaurant Dubuque, IA. Andrea was project architect for a remodel and addition.

Wollersheim Winery, Sauk City, WI. Andrea worked as an Architect on the project producing construction documents and code review materials on an addition to an existing winery. The addition included a bottling area, distillery and retail space.

Cardinal CG Technology Center, Spring Green, WI. Andrea produced Revit drawings for an addition to an existing factory. The addition included warehouse and office space.

Cardinal AG Interior Remodel. Andrea worked as an Architect on the project, producing construction documents and code review materials. The addition included office space and a break room.

Cardinal West End Addition, Spring Green, WI. Andrea was the architect on a 107,916 SF addition to an existing factory.

Cardinal Northeast Addition, Spring Green, WI. Andrea was the architect on a 14,500 SF addition to an existing factory.

Sauk County Salt Storage. Andrea produced Revit drawings of a new salt storage facility.

Wollersheim Grape Press Addition. Andrea worked as an Architect on an addition, producing construction documents.

OFFICES

Meister Cheese, Muscoda, WI. Andrea served as Architect on an office addition to a cheese factory.

St. Vincent DePaul Warehouse & Offices, Madison. Andrea assisted the Project Architect on the construction documents for a food distribution warehouse and office facility for St. Vincent DePaul.

Ho-Chunk Community Health Office, Nekoosa, WI. Andrea served as the Project Manager for the office project in Nekoosa, WI. Design documents, construction and bidding documents, and construction observation services were completed throughout the project.

Mineral Point Airport Air Ambulance, Mineral Point, WI. Andrea served as the Architectural Project Manager for the design that included approximately 2,000 SF two story office and storage build-out in an existing hanger at the Mineral Point Airport.



Michael E. Mertens, PE Structural Engineer

Michael Mertens is a skilled structural engineer with extensive experience in the design of industrial, commercial, and residential buildings, utilizing concrete, steel, wood and masonry design. He has extensive experience as a certified bridge inspector. In addition, he provides structural engineering services for bridges, retaining walls, and other transportation structures.

BUILDINGS

Wollersheim Winery, Sauk City. Michael served as the Structural Engineer for master planning for expansion of existing Winery to include new distillery operations and structural renovation of historic buildings for current activities.

Multiple Additions, Meister Cheese Company, Muscoda, WI. Michael served as the Project Engineer for multiple addition projects in Muscoda. The team designed new buildings in which to house offices, storage and process spaces.

Cardinal Glass, Spring Green, WI. Assisted the Jewell team with the multiple additions to a window assembly factory. The projects included strip footing and spread footing design, and steel beam and column design for office, storage and factory spaces.

Twin State, Inc. – Loading Pad & Building, Janesville, WI. Michael served as the Project Engineer for this expansion project. Jewell provided their engineering services, which included: preparing a report that provided geotechnical recommendations regarding site preparation, foundation and floor slab design/construction.

Cardinal CG Technology Center. Michael assisted the Jewell team and helped produce Revit drawings for an addition to an existing factory.

Sub-Zero Harvest Haven, Fitchburg, WI. Michael served as the Project Engineer for the Sub-Zero Wolf Harvest Haven building and site development in Fitchburg, WI. Jewell provided a complete topographic survey which included location of all

EDUCATION

*Bachelor of Science
Architectural
Engineering
Structural Emphasis,
Milwaukee School
of Engineering*

REGISTRATIONS & CERTIFICATIONS

*Professional Engineer
- WI*

*Professional Engineer
- IN*

*Wisconsin Certified
Bridge Inspector #9516*

*FWHA Certified
Bridge Inspector*

EXPERIENCE

22 years

utilities, adjacent streets and existing entrances and other existing features. Jewell team also developed a grading and site plan for the entire development. In addition, they provided all design for water and sewer services.

COMPREHENSIVE LIST OF PROJECTS

Buildings

Retail/Mercantile Animart, Waunakee, Wisconsin
La Farge Pizza, La Farge, Wisconsin
Culver's Addition, Beaver Dam, Wisconsin
Culver's Addition, Mauston, Wisconsin
Culver's Addition, Green Bay, Wisconsin
Culver's Addition, Tomah, Wisconsin
Culver's, Black River Falls, Wisconsin
Wisconsin Riverside Resort, Spring Green, Wisconsin
Kozelka-Wall Clothing Store Addition, Dodgeville, Wisconsin
New Horizons Cenex, Dodgeville, Wisconsin
Riteway Plaza Addition, Spring Green, Wisconsin
Straka Meat's Addition, Plain, Wisconsin
Spring Into Motion Dance Studio Addition, Spring Green, Wisconsin
Gabbei Meat's Addition, Verona, Wisconsin

Industrial

Multiple Additions, Cardinal CG, Spring Green, Wisconsin
Multiple Additions, Cardinal IG, Spring Green, Wisconsin
Multiple Additions, Cardinal AG, Spring Green, Wisconsin
Multiple Additions, Meister Cheese, Muscoda, Wisconsin
Multiple Additions, Maple Leaf Cheese, Monroe, Wisconsin
Silo Foundation, Chalet Cheese Cooperative, Monroe, Wisconsin
Allegiant Oil, Lancaster, Wisconsin
Multiple Additions, Wollersheim Winery & Distillery, Prairie Du Sac, Wisconsin
Cedar Grove Cheese Addition, Plain, Wisconsin
Neesvig's Addition, Windsor, Wisconsin
Hoist Beam Load Ratings, Milk Specialties, Boscobel, Wisconsin

Religious

Cornerstone Church, Spring Green, Wisconsin
Church of Nazarene Fellowship Hall, Richland Center, Wisconsin
Immaculate Conception Church, Boscobel, Wisconsin

Government

Columbia County Highway Shop & Salt Shed, Cambria, Wisconsin
Sauk County Salt Shed, Baraboo, Wisconsin
Crawford County Salt Shed, Prairie Du Chien, Wisconsin

Crawford County Administration Building, Prairie Du Chien, Wisconsin
Crawford County Highway Department, Seneca, Wisconsin
Brown County, Photovoltaic Projects, Brown County, Wisconsin
Town Hall, Town of Roxbury, Wisconsin
Krouskup Park Restroom Facility, Richland Center, Wisconsin
Linden Waste Water Treatment Plant, Linden, Wisconsin
Multiple Additions, Bloomfield Manor, Dodgeville, Wisconsin
Fire Station, Spring Green, Wisconsin
Fire Station, Adams, Wisconsin
Fire Station, Hollandale, Wisconsin
Sauk Prairie Ambulance Building, Wisconsin

Private

White Oak Savannah, Barn Restoration & Wedding Facility, Dodgeville, Wisconsin
House on the Rock, New Museum Building, Spring Green, Wisconsin
House on the Rock, Misc. Additions, Spring Green, Wisconsin
Sand Valley Club House, Rome, Wisconsin
Sub-Zero Harvest Haven Building, Fitchburg, Wisconsin
Spring Green Motel Addition, Spring Green, Wisconsin
Access Community Connections Free Dental Clinic, Dodgeville, Wisconsin



Todd L. Deibert, P.E.
Senior Engineer, Project Manager



EDUCATION

*Bachelor of Science
Civil Engineering,
UW-Madison*

**REGISTRATIONS
& CERTIFICATIONS**

*Professional Engineer
- WI, IL*

**PROFESSIONAL
AFFILIATIONS**

*American Water Works
Association*

EXPERIENCE

22 years

Mr. Deibert is a professional civil engineer with experience in the design of municipal street design, wastewater and stormwater conveyance systems, water transmission and distribution systems, stormwater treatment, site grading, plumbing design, dam inspections and permitting, and street lighting design.

SITE DESIGN

Taliesin - Hillside School, Spring Green, WI. Todd provided engineering services to address stormwater drainage around the buildings located at the Hillside School site. The project included a topographic survey to determine surface water flow paths and grades for drainage structures and pipes, calculations of stormwater runoff quantities for sizing drains and piping, preparation of biddable CAD drawings showing proposed improvements, and preparation of a construction cost estimate for the site work. Phase two involved identifying locations in the buildings that continued to leak during wet weather after the site work was completed, preparation of a report with proposed solutions for leakage along with construction cost estimate for building work.

Blackhawk Lake Toilet/Bathroom Facilities, Highland, WI. Todd provided design engineering services for the addition of a toilet and bathroom building in Blackhawk Lake Park. The project including site work as well as the addition of a 1,050 SF building. The site design included stormwater, water and sanitary sewer utility extensions, parking lot design, site grading, and ADA accessibility.

Blair-Taylor Unified Campus, Blair, WI. Todd provided engineering services for site design of a \$17 million school addition which included stormwater conveyance and onsite detention and treatment, water and sanitary sewer utility extensions, parking lot design, site grading, and ADA accessible routes. Other duties included coordination with local utilities and the County Land Use Department and required permitting was obtained through DNR and Trempealeau County.

Ho-Chunk Community Health Office, Nekoosa, WI. Todd provided engineering services for site utilities and plumbing design for the construction of a new health office building.

ATMOB Barracks, Fort McCoy, WI. Site design for a \$7 million multi-use building, including the design of stormwater conveyance and onsite stormwater detention and treatment, water and sanitary sewer utility extensions, parking lots, driveways, and site grading. Required permitting was obtained through DNR.

Wyalusing State Park Indoor Camp Septic System, Town of Wyalusing, Grant County, WI. Todd served as the Project Engineer for the replacement project of the septic system at Wyalusing Indoor Group Camp. Upon inspection of the drain field by park staff, they discovered significant problems with the indoor group camp septic field. The lower half of the drain field was exposed at the surface and one pipe had completely failed and was discharging raw sewage.

Culver's Restaurants. Site layout and design for Culver's Restaurants located in Iowa City, Iowa; Crete, Illinois; Monee, Illinois and Berwyn, Illinois. The projects included the design of water and sanitary sewer utility extensions, parking lot layout, site grading, stormwater conveyance and onsite treatment, and associated permitting.

Ritchie Implement, Cobb, WI. Site design for a building and parking lot addition. The project included site grading, stormwater conveyance, and onsite treatment with the use of biofiltration ponds.

PLUMBING

Cardinal Glass ST Research & Development Facility, Spring Green, WI. The project consisted of remodeling an existing 16,625 SF vacant building for office space, a laboratory, and manufacturing facility. A majority of the existing bathroom plumbing was replaced and new plumbing was added for the proposed laboratory and manufacturing areas. The laboratory included the addition of a deionized water system.

Crawford County Highway Department Satellite Shops. The project consisted of adding floor drains and catch basins to existing county highway garages to aid in the drainage of snow melt from snow plowing equipment. One site included the associated plumbing for the addition of a bathroom and break room, including a holding tank.

Church of the Nazarene, Richland Center, WI. The project involved remodeling an existing building to create a fellowship hall for the church. The remodeling included adding a men's and women's bathroom, a utility room, and a kitchen for food preparation for a total of 14 fixtures.

Krouskop Park Restroom Addition, Richland Center, WI. The project involved adding a men's and women's bathroom to an existing city park shelter/warming house. The plumbing design focused on ease of maintenance and vandal-resistance. The project consisted of 24 fixtures.

Cardinal Glass ST, Mazomanie, WI. The project consisted of a new

177,000 SF manufacturing facility for a new division of Cardinal Glass. The building includes a manufacturing area, multiple restrooms, maintenance rooms, offices, a break room, and an equipment wash down area with a total of 98 fixtures.

Community Connections Free Clinic/Dental Clinic, Dodgeville, WI. The project involved the renovation and remodeling of an existing building to create a medical and dental clinic. The remodeled building includes six medical exam rooms, four dental exam rooms, two restrooms, a break room, a lab room, an x-ray room, and a utility room. The plumbing design included compressed air and vacuum systems, a hot water recirculation system, and a total of 20 fixtures. Jewell Associates donated the professional services for structural engineering and plumbing design for the project.

Ho-Chunk Community Health Office, Nekoosa, WI. Todd provided engineering services for site utilities and plumbing design for the construction of a new health office building.

UTILITIES

Prairie Subdivision, Spring Green, Wisconsin. Project consisted of the development of 40 acres into commercial, business and residential uses including streets, stormwater management, sanitary sewer, lift station, water distribution, grading, and sidewalks.

2014 Madison Street and Jefferson Street Reconstruction, Spring Green, Wisconsin. Reconstruction of a total of five blocks of two residential major collector streets. Project included storm sewer, water and sanitary sewer design, and construction management.

2006 Madison Street Reconstruction, Spring Green, Wisconsin. Reconstruction of four blocks of a residential major collector street. Project included a great deal of public involvement, sewer, water and storm sewer design, lift station design and construction management.

Village of Spencer, Wisconsin. Design of 3,657 linear feet water and sewer replacements and the re-routing of several sanitary sewer segments in conjunction with the reconstruction of HWY 23.

STORM WATER

Town of Spring Green Flood Control, Sauk County, WI. Following devastating flooding in 2008 resulting from elevated groundwater and intense storm events, Jewell Associates was contracted by the Town of Spring Green to conduct a study and develop strategies to mitigate future flooding events. The project was awarded grants from the EDA and WI Dept. of Commerce (CDBG), which Jewell wrote and then

administered during design and construction of the drainage swale. In addition to assisting with design of the drainage swale that was built to channel overland waters to the floodplain of the Wisconsin River, Todd assisted with grant administration including labor compliance interviews, submittal documents and general maintenance of records.

Cardinal West Expansion, Spring Green, WI. Todd assists with an ongoing stormwater inspection program for Cardinal Glass to maintain compliance with stormwater permit provisions. Inspections of the facility grounds are conducted and documented by staff during dry and wet weather conditions as required by the permit. Todd also helps to provide inspection records for Cardinal Glass so they are available on site for WDNR inspection.

Culver's Restaurants. Site layout and design for Culver's Restaurants located in Iowa City, Iowa; Crete, Illinois; Monee, Illinois and Berwyn, Illinois. The projects included the design of water and sanitary sewer utility extensions, parking lot layout, site grading, stormwater conveyance and onsite treatment, and associated permitting.

Ritchie Implement, Cobb, WI. Site design for a building and parking lot addition. The project included site grading, stormwater conveyance, and onsite treatment with the use of biofiltration ponds.

East Haertel Street Reconstruction, Portage, WI. Jewell Associates was contracted to provide design engineering to address the functional deficiencies and safety concerns of the existing roadway. The roadway borders existing wetlands and a portion of the road was built on top of a landfill. The project consisted of adjusting the vertical alignment of the roadway, addition of bike lanes and sidewalks, and pavement marking. Todd designed the stormwater drainage and treatment facilities for the project, which consisted of grass swales, filter strips and a wet pond.

ATMOB Barracks, Fort McCoy, WI. Site design for a \$7 million multi-use building, including the design of stormwater conveyance and onsite stormwater detention and treatment, water and sanitary sewer utility extensions, parking lots, driveways, and site grading. Required permitting was obtained through DNR.

Blair-Taylor Unified Campus, Blair, WI. Todd provided engineering services for site design of a \$17 million school addition which included stormwater conveyance and onsite detention and treatment, water and sanitary sewer utility extensions, parking lot design, site grading, and ADA accessible routes. Other duties included coordination with local utilities and the County Land Use Department and required permitting was obtained through DNR and Trempealeau County.

**EDUCATION**

*Bachelors of Arts
Interior Design
Emphasis,
UW-Stout*

**REGISTRATIONS
& CERTIFICATIONS**

*Interior Designer
- NCIDQ*

EXPERIENCE:

15 YEARS

**Kelly Anliker, NCIDQ, WRID
Interior Designer**

Kelly Anliker is experienced with providing interior design services on a variety of projects. Services include: designing and drafting interior layouts, elevations, furniture and finish schedules, writing specification for selections, constructing computer generated 3-D models for structures, and providing excellent CAD and Revit services for production work.

MIXED USE

White Oak Savanna, Dodgeville, WI. Interior designer for the project which included a kitchen building, special events barn reconstruction and house remodel.

COMMERCIAL

Adams County Fire Station, Adams, WI. Interior designer and drafting technician for a 14,000 SF fire station with office space and an apparatus bay.

Animart, Waunakee, WI. Provided design and drafting services for a multi-tenant building which included a pet store and additional retail space.

Cardinal CG Restroom Remodel, Spring Green, WI. Interior designer for a project that included new and remodeled restrooms, and new office finishes.

Cardinal CG Technology Center, Spring Green, WI. Interior designer for an addition to an existing factory which included warehouse and office space.

Cardinal West End Addition, Spring Green, WI. Produced construction documents for a 107,916 SF addition to an existing factory and served as the interior designer for finished areas.

Culvers Restaurant Beaver Dam, WI. Interior designer for a dining room addition and remodel of the existing interior and exterior.

Culvers Restaurant Dubuque, IA. Interior designer for a dining room addition and remodel of the existing interior and exterior.

Culvers Restaurant New Glarus, WI. Interior designer for a dining room addition and remodel of the existing interior and exterior.

Culvers Restaurant Portage, WI. Interior designer for a dining room addition and remodel of the existing interior and exterior.

Meffert Oil, Waunakee, WI. Provided design and drafting services for a convenience store and Arby's restaurant.

Wollersheim Winery, Sauk City, WI. Interior designer for an addition which included a distillery, bottling area and retail space.

WRCO, Richland Center, WI. Interior designer for the remodel of an existing building to suit the needs of a local radio station.

OFFICES

Meister Cheese, Muscoda, WI. Interior designer and drafting technician for a breakroom and office addition, designing and creating interior finish plans.

Ho-Chunk Community Health Office, Nekoosa, WI. Interior design and drafting services for a new office building.

GOVERNMENT

Iowa County Courthouse, Dodgeville, WI. Interior designer for a courthouse remodel that involved reconfiguring existing offices and meeting areas and providing a new interior for the historic courtroom.

Sauk Prairie Ambulance, Sauk Prairie, WI. Interior designer for the renovation of the Sauk Prairie Ambulance building.

CHURCHES

Grace Lutheran Church, Dodgeville, WI. Interior designer for a kitchen remodel in an existing church.

3—Fee for Services

Unless noted otherwise below, the proposed fee listed below is an all-inclusive lump sum fixed fee and includes all transportation, communication, overtime work, insurance, consultant fees, and printing not associated with bidding. A Jewell Billing Rate Schedule is provided on the next page for reference.

We have divided our proposal into the sections as requested on page 6 of the proposal:

| | |
|---|---|
| Site Plans & Specifications | \$6,600 |
| Site Topographic Survey | \$1,650 |
| Geotechnical Borings and Report | \$3,500 (estimate) |
| Onsite Stormwater Management System | \$2,500 (estimate, if needed) |
| Exterior Building Plans | \$7,000 |
| Interior Building Plans | \$7,000 |
| Mechanical, Electrical, Plumbing | \$12,000 |
| Final Grading/Landscaping | \$2,500 (estimate for landscape design) |
| State Submittal Fees | \$2,000 (estimate of submittal fees) |
| <u>Bidding & Construction Support</u> | <u>\$15,000 (Time & Materials Estimate)</u> |
| Total Fee for Services and Fees | \$59,750 |



JEWEL-4

OP ID: RH

CERTIFICATE OF LIABILITY INSURANCE

DATE (MM/DD/YYYY)

10/20/2020

THIS CERTIFICATE IS ISSUED AS A MATTER OF INFORMATION ONLY AND CONFERS NO RIGHTS UPON THE CERTIFICATE HOLDER. THIS CERTIFICATE DOES NOT AFFIRMATIVELY OR NEGATIVELY AMEND, EXTEND OR ALTER THE COVERAGE AFFORDED BY THE POLICIES BELOW. THIS CERTIFICATE OF INSURANCE DOES NOT CONSTITUTE A CONTRACT BETWEEN THE ISSUING INSURER(S), AUTHORIZED REPRESENTATIVE OR PRODUCER, AND THE CERTIFICATE HOLDER.

IMPORTANT: If the certificate holder is an ADDITIONAL INSURED, the policy(ies) must have ADDITIONAL INSURED provisions or be endorsed. If SUBROGATION IS WAIVED, subject to the terms and conditions of the policy, certain policies may require an endorsement. A statement on this certificate does not confer rights to the certificate holder in lieu of such endorsement(s).

| PRODUCER 608-644-8563 Schwarz Insurance - S.G. 157 W. Jefferson Street P.O. Box 879 Spring Green, WI 53588-0879 Nadene M. Litscher | CONTACT NAME: Rana Hughey PHONE (A/C, No, Ext): 608-644-8563 FAX (A/C, No): 608-643-3249 E-MAIL ADDRESS: rhug@schwarzins.com | | | | | | | | | | | | | | |
|---|---|-------------------------------|--------|------------------------------------|-------|-------------------|--|-------------------|--|-------------------|--|-------------------|--|-------------------|--|
| INSURED Jewell Associates Engineers 560 Sunrise Drive Spring Green, WI 53588 | <table border="1" style="width: 100%; border-collapse: collapse;"> <tr> <th style="text-align: left;">INSURER(S) AFFORDING COVERAGE</th> <th style="text-align: left;">NAIC #</th> </tr> <tr> <td>INSURER A: Secura Companies</td> <td>22543</td> </tr> <tr> <td>INSURER B:</td> <td></td> </tr> <tr> <td>INSURER C:</td> <td></td> </tr> <tr> <td>INSURER D:</td> <td></td> </tr> <tr> <td>INSURER E:</td> <td></td> </tr> <tr> <td>INSURER F:</td> <td></td> </tr> </table> | INSURER(S) AFFORDING COVERAGE | NAIC # | INSURER A: Secura Companies | 22543 | INSURER B: | | INSURER C: | | INSURER D: | | INSURER E: | | INSURER F: | |
| INSURER(S) AFFORDING COVERAGE | NAIC # | | | | | | | | | | | | | | |
| INSURER A: Secura Companies | 22543 | | | | | | | | | | | | | | |
| INSURER B: | | | | | | | | | | | | | | | |
| INSURER C: | | | | | | | | | | | | | | | |
| INSURER D: | | | | | | | | | | | | | | | |
| INSURER E: | | | | | | | | | | | | | | | |
| INSURER F: | | | | | | | | | | | | | | | |

COVERAGES**CERTIFICATE NUMBER:****REVISION NUMBER:**

THIS IS TO CERTIFY THAT THE POLICIES OF INSURANCE LISTED BELOW HAVE BEEN ISSUED TO THE INSURED NAMED ABOVE FOR THE POLICY PERIOD INDICATED. NOTWITHSTANDING ANY REQUIREMENT, TERM OR CONDITION OF ANY CONTRACT OR OTHER DOCUMENT WITH RESPECT TO WHICH THIS CERTIFICATE MAY BE ISSUED OR MAY PERTAIN, THE INSURANCE AFFORDED BY THE POLICIES DESCRIBED HEREIN IS SUBJECT TO ALL THE TERMS, EXCLUSIONS AND CONDITIONS OF SUCH POLICIES. LIMITS SHOWN MAY HAVE BEEN REDUCED BY PAID CLAIMS.

| INSR LTR | TYPE OF INSURANCE | ADDL INSD | SUBR WVD | POLICY NUMBER | POLICY EFF (MM/DD/YYYY) | POLICY EXP (MM/DD/YYYY) | LIMITS |
|----------|---|-----------|----------|---------------|-------------------------|-------------------------|---|
| A | <input checked="" type="checkbox"/> COMMERCIAL GENERAL LIABILITY <input type="checkbox"/> CLAIMS-MADE <input checked="" type="checkbox"/> OCCUR <input checked="" type="checkbox"/> AGG/Proj GEN'L AGGREGATE LIMIT APPLIES PER: <input type="checkbox"/> POLICY <input checked="" type="checkbox"/> PRO-JECT <input type="checkbox"/> LOC OTHER: | | | 3219060 | 03/01/2020 | 03/01/2021 | EACH OCCURRENCE \$ 1,000,000 DAMAGE TO RENTED PREMISES (Ea occurrence) \$ 500,000 MED EXP (Any one person) \$ 10,000 PERSONAL & ADV INJURY \$ 1,000,000 GENERAL AGGREGATE \$ 2,000,000 PRODUCTS - COMP/OP AGG \$ 2,000,000 |
| A | AUTOMOBILE LIABILITY <input checked="" type="checkbox"/> ANY AUTO <input type="checkbox"/> OWNED AUTOS ONLY <input type="checkbox"/> SCHEDULED AUTOS <input type="checkbox"/> HIRED AUTOS ONLY <input type="checkbox"/> NON-OWNED AUTOS ONLY | | | A3219061 | 03/01/2020 | 03/01/2021 | COMBINED SINGLE LIMIT (Ea accident) \$ 1,000,000 BODILY INJURY (Per person) \$ BODILY INJURY (Per accident) \$ PROPERTY DAMAGE (Per accident) \$ |
| A | <input checked="" type="checkbox"/> UMBRELLA LIAB <input checked="" type="checkbox"/> OCCUR <input type="checkbox"/> EXCESS LIAB <input type="checkbox"/> CLAIMS-MADE DED <input checked="" type="checkbox"/> RETENTION \$ 10,000 | | | CU3219063 | 03/01/2020 | 03/01/2021 | EACH OCCURRENCE \$ 6,000,000 AGGREGATE \$ 6,000,000 |
| A | WORKERS COMPENSATION AND EMPLOYERS' LIABILITY ANY PROPRIETOR/PARTNER/EXECUTIVE OFFICER/MEMBER EXCLUDED? (Mandatory in NH) <input checked="" type="checkbox"/> Y <input checked="" type="checkbox"/> N If yes, describe under DESCRIPTION OF OPERATIONS below | | N/A | WC3219062 | 03/01/2020 | 03/01/2021 | <input checked="" type="checkbox"/> PER STATUTE <input type="checkbox"/> OTH-ER E.L. EACH ACCIDENT \$ 100,000 E.L. DISEASE - EA EMPLOYEE \$ 100,000 E.L. DISEASE - POLICY LIMIT \$ 500,000 |

DESCRIPTION OF OPERATIONS / LOCATIONS / VEHICLES (ACORD 101, Additional Remarks Schedule, may be attached if more space is required)

CERTIFICATE HOLDER**CANCELLATION**

| | |
|--|---|
| RICCO-4 Richland County Ambulance Service PO Box 251 Richland Center, WI 53581 | SHOULD ANY OF THE ABOVE DESCRIBED POLICIES BE CANCELLED BEFORE THE EXPIRATION DATE THEREOF, NOTICE WILL BE DELIVERED IN ACCORDANCE WITH THE POLICY PROVISIONS. AUTHORIZED REPRESENTATIVE Nadene M. Litscher |
|--|---|

Jewell Associates Engineers, Inc.
Billing Rates Schedule
As of January 1, 2020

| <u>Employee Classification</u> | <u>Hourly Billing Rate</u> |
|--|---------------------------------------|
| Senior Principal | \$200.00 |
| Senior Structural Engineer | \$170.00 |
| Principal | \$160.00 |
| Senior Project Manager | \$145.00 |
| Project Manager Construction Manager | \$125.00 |
| Senior Engineer Senior Architect | \$115.00 |
| Staff Engineer Staff Architect | \$110.00 |
| Professional Land Surveyor | \$110.00 |
| Interior Designer | \$100.00 |
| Engineer-In-Training Survey Technician Construction Observer | \$90.00 |
| Engineering Technician Architectural Technician | \$85.00 |
| Accountant Grant Specialist | \$130.00 |
| Administrative/Clerical | \$65.00 |
| <u>Reimbursable Expenses</u> | <u>Cost per Unit</u> |
| Copies – Black & White (up to 11"x17") | \$.10/sheet |
| Copies – Color (up to 11"x17") | \$.25/sheet |
| Large Format Copies (24"x36") | \$5.00/sheet |
| Large Format Scans (24"x36") | \$3.00/sheet |
| Mileage – Company or Personal Vehicle | IRS Rates |
| Travel Expenses – Meals and Lodging Per Diem | \$125.00/day |
| Postage, Outsourced Printing, Supplies, Subconsultants | At cost |
| Nuclear Density Meter | \$125.00/day |

4—Jewell Project References

Spring Green Area

Fire Protection District

327 South Winsted Street
Spring Green, WI 53588

Lin Gunderson, Fire Chief
(608) 588-7157
lktcgunr@charter.net

Derek Miller, EMS Chief
(608) 588-2155
dmiller@cornerstones.org

Sauk Prairie Ambulance

Kevin Weber, Director
470 Oak Street
Prairie du Sac, WI 53578
(608) 643-4183
info@saukprairieambulance.com

Adams County Fire District Station

William Euclid
Adams County Fire District
105 N. Main Street
Adams, WI 53910
(608) 339-3011
weuclide@gmail.com

Crawford County Highway Facility

Dennis Pelock
Crawford County Highway Commissioner
P.O. Box 39
Seneca WI 54654
(608) 734-9500
dpelock@crawfordcountywi.org

Columbia County

Chris Hardy
Columbia County Highway Commissioner
400 DeWitt Street
Portage, WI, 53901
(608) 429-2136
Chris.hardy@co.columbia.wi.us

Jackson County

Jay Borek
Jackson County Highway Commissioner
119 Harrison Street
Black River Falls, WI 54615
(715) 284-0233
Jay.borek@co.jackson.wi.us

Iowa County

Craig Hardy
Iowa County Highway Commissioner
1215 N Bequette Street
Dodgeville, WI, 53533
(608) 935-3381
Craig.hardy@iowacounty.org

Additional references can be provided upon request.