



## SOUTHWESTERN WISCONSIN REGIONAL PLANNING COMMISSION

### Dickeyville wins \$2.87 million dollar EDA Grant

**D**ickeyville's U.S. Economic Development Administration (EDA) grant for \$2,867,824.80 is coupled with \$716,956.20 in local match for a total investment in the project of \$3,584,781. The EDA is paying 80% of the project through the CARES Act, which is targeted at Coronavirus response and economic stimulus.

Construction is likely to begin in the late summer of 2021 for the new 22.75 acre industry park and will take approximately seven months to complete.

"This award is the result of Dickeyville Village President Matt Gantenbein's leadership coupled with the vision and initiative of the Village Board as well as the partnership

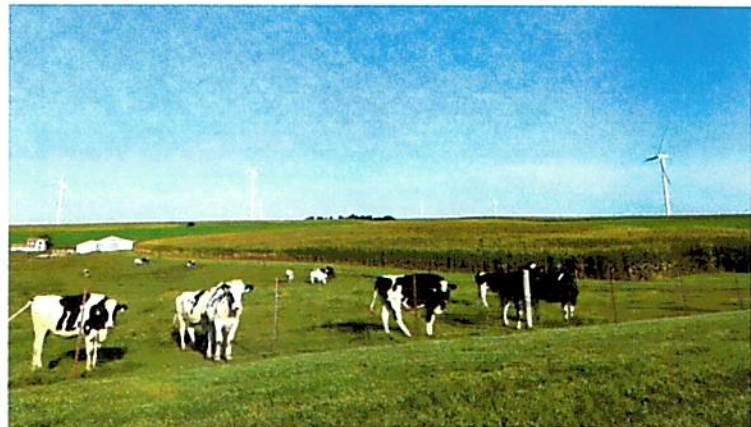
formed between the Village, SWWRPC, and Delta 3 Engineering," said Troy Maggied, Executive Director of the Southwestern Wisconsin Regional Planning Commission.

SWWRPC wrote the Dickeyville grant and since 1979, SWWRPC has written 19 grants and been awarded over \$15 million. When matched with \$9.8 million in local funds, these projects total \$24.8 million in industry park infrastructure funding across 13 communities. EDA grant funding is a powerful tool for community development efforts, and SWWRPC has been very successful in helping communities identify projects and acquire funding from both the EDA and other grant resources. Contact us if you would like to seek grant funding for your local projects. ■



### Regional Online Free Photo Library Opens

**A**ll communities and businesses are invited to use the 1,000 item image library that has just launched on [SWWRPC.org/photo-database](http://SWWRPC.org/photo-database). Cory Ritterbusch is our staff photographer and has spent 6 months shooting, editing, and categorizing the images. There is no charge to use the images but it is requested that SWWRPC be listed at the photo credit. Check out what we have so far and if you have photos you want to have taken, please contact Cory at [c.ritterbusch@swwrpc.org](mailto:c.ritterbusch@swwrpc.org). ■





## PARTNER SPOTLIGHT

### Platteville Business Incubator

The Platteville Business Incubator is celebrating its 20th anniversary this year with a \$340,000 reinvestment into the 26,000 sq. ft. facility including new rentable desks and co-working space. Delta 3 Engineering is managing the renovation that will be finished in July 2021.

Temporary co-working space is already available at the Incubator at \$30/month which includes 8am-6pm access to the workspace, fiber optic internet and complementary coffee/tea. Plans offering 24-hour access and socially distanced reserved desks with storage are also available and range from \$70/month to \$120/month. In addition to the co-working space, offices and manufacturing spaces are available from 130 sq. ft. to 1800 sq. ft. with prices from \$144 to \$1,492. Tenants are also eligible to apply

for up to \$75,000 in startup or expansion capital at low interest rates and flexible terms.

The Platteville Business Incubator has onsite daycare, business mentors, educational sessions, commercial kitchen facilities, a laser cutter, group insurance, below and at-grade loading docks, forklifts and office equipment available to tenants. The Incubator has hosted 70 businesses over the last 20 years, 42 businesses remain active and those businesses employ 382 people. The Incubator currently houses 18 businesses, including technology companies, professional services, manufacturing, internet resellers and food trucks.

More information is available by contacting SWWRPC-contracted Incubator Executive Director Kate Koziol at [Kate@pbii.org](mailto:Kate@pbii.org) or by calling (608) 305-4428. ■



### 2021 Commission Meeting Calendar

Commission meetings are currently held on Zoom and the public is welcome to attend all Full Commission meetings. Contact Troy Maggied at [t.maggied@swwrpc.org](mailto:t.maggied@swwrpc.org) if you would like more information.

#### Full Commission

- May 25
- June 30
- August 24
- November 23

#### Executive Committee

- April 27
- July 27
- September 22



### Have Questions? We are here to help.



**Troy Maggied • Executive Director**  
608.342.1636 • [t.maggied@swwrpc.org](mailto:t.maggied@swwrpc.org)



**Matthew Honer • Associate Planner**  
608.342.1637 • [m.honer@swwrpc.org](mailto:m.honer@swwrpc.org)



**Kate Koziol • Economic Development Specialist**  
608.342.1751 • [k.koziol@swwrpc.org](mailto:k.koziol@swwrpc.org)



**Jaclyn Essandoh • GIS Specialist**  
608.342.6005 • [j.essandoh@swwrpc.org](mailto:j.essandoh@swwrpc.org)



**Cory Ritterbusch • Associate Planner**  
608.342.1057 • [c.ritterbusch@swwrpc.org](mailto:c.ritterbusch@swwrpc.org)



**Griffin Koziol • Associate Planner**  
608.348.5055 • [g.koziol@swwrpc.org](mailto:g.koziol@swwrpc.org)



**Sonya Silvers • Office Manager**  
608.342.6065 • [s.silvers@swwrpc.org](mailto:s.silvers@swwrpc.org)