

General Engineering Company
P.O. Box 340
916 Silver Lake Drive
Portage, WI 53901



Engineers • Consultants • Inspectors

608-742-2169 (Office)
608-742-2592 (Fax)
gec@generalengineering.net
www.generalengineering.net

May 13, 2021

Mr. Jasen Glasbrenner, Director
Richland Economic Development
450 South Main St
Richland Center, WI 53581

Re: Lone Rock Village Center Park – CDBG Close Project

Dear Jasen,

Thank you for considering us in your consultant selection for the above-referenced project. We appreciate the opportunity to work with both you, Richland County and the Village of Lone Rock to provide Engineering Services for the Lone Rock Village Center Park project.

You will find enclosed our proposal identifying our Project Team and their specific expertise and abilities that are necessary to provide a successful project for Richland County to be completed in accordance with the proposal request. Our proposal is to complete the specific services identified in the Request for Proposal scope for a not to exceed estimated amount of **\$38,000** in accordance with the proposed timeline schedule. References and related project experience similar to this project have been included for your review.

THANK YOU again for the opportunity to work with you, Richland County and the Village of Lone Rock. We have personnel ready to tackle the project and bring it to fruition considering the deadlines for the project proposed.

Sincerely,

GENERAL ENGINEERING COMPANY

A handwritten signature in blue ink that reads 'Kory D. Anderson'.

Kory D. Anderson, PE
Project Manager / Vice-President

A handwritten signature in blue ink that reads 'Lukasz A. Lyzwa'.

Lukasz A. Lyzwa
Project Engineer



Consulting Engineering • Structural Engineering • Building Design • Environmental Services
Grant Procurement & Administration • Land Surveying • Zoning Administration • Building Inspection • GIS Services





Engineers • Consultants • Inspectors

General Engineering Company

Proposal

Village of Lone Rock

Engineering Services

Lone Rock Village Center Park Project

(608) 742-2169

gec@generalengineering.net

www.GeneralEngineering.net

Consulting Engineering

Structural Engineering

Land Surveying

GIS

Building Design

Environmental Services

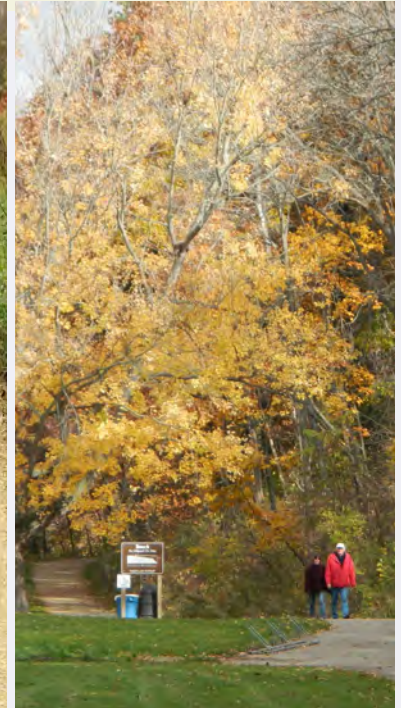
Grants & Funding

Zoning Administration

Building Inspection

Cross Connection Control

Mechanical, Electrical &
Plumbing Design



Portage

916 Silver Lake Drive
Portage, WI 53901
608-742-2169

La Crosse

N5589 Commerce Rd, Ste 120
Onalaska, WI 54650
608-782-6558

Black River Falls

101 South 2nd St
Black River Falls, WI 54615
608-742-2169



Company Overview

General Engineering Company
916 Silver Lake Drive
P.O. Box 340
Portage, WI 53901
608-742-2169 Phone
608-742-2592 Fax
Website: generalengineering.net

Primary Project Contact:
Kory D. Anderson P.E.
Vice President
kanderson@generalengineering.net
Lukasz A. Lyzwa
Project Engineer
llyzwa@generalengineering.net

Corporate Qualifications

For over 100 years, General Engineering Company has provided multidisciplinary consulting engineering, inspection and professional services throughout Wisconsin and the surrounding Midwest region. Headquartered in Portage, WI, with offices in La Crosse and Black River Falls, General Engineering Company approaches every project with a client focus. While every project situation is unique, GEC uses our extensive project experience, creativity and a staff of diverse professionals to provide a comprehensive, client-based solution.



GEC's professional and engineering staff are trained in a variety of fields, including municipal, environmental and wastewater engineering, stormwater management, erosion control, site planning and private development coordination. Along with our engineering staff, GEC employs numerous specialists and experts to assist our

clients with their specific needs. These specialties include building inspection, grants and funding, environmental testing and reporting, cross connection control, GIS and structural engineering.

Firm Size 2021: 65

SBA-qualified Small Business

Since the founding of General Engineering Company in 1912, we continue to be dedicated to our clients best interests and needs. For our Municipal clients, those needs often have included varied community improvement and enhancements, ranging from walking trails and parks with shelters and community centric amenities, to the more current trends of splashpads and skateparks. GEC has partnered with community non-profits and municipal leaders to see these projects come to fruition.



GEC's core philosophy is to ensure that best practices in planning and engineering are built into every project we undertake. Our professional team will streamline efficiency, reduce waste, utilize sustainable resources, and work to achieve a superior standard of excellence.

Jerry A. Foellmi PE, President Emeritus
Brad R. Boettcher PE, President
Kent E. Fish PE, Vice President
Kory D. Anderson PE, Vice President
Mark E. Jankowski, Director of Inspection Services



Project Scope



Project Scope

The Project Scope

The proposed project will include the purchase of a parcel by the Village, demolition of the existing buildings, and converting the space to an open space park for the enjoyment of the residents. The reshaping process of the land will require regrading and adding needed soil to promote vegetation growth. Additionally, the proposed project will include construction of new sidewalk to improve accessibility.

The engineering aspect will require design and documentation preparation, bidding services, construction administration, and communication and coordination with the Village and the County to assure execution of the services to the full satisfaction of all parties involved.

Scope of Work

Our method of completing the design and construction-related engineering is defined in the breakdown listed below. This allows the Village and the County to understand how we go through the process of collecting and processing information, designing the solution through involvement with the appropriate agencies, obtaining approvals, bidding, administering the construction process, and closing out the project to the Village and County's satisfaction.

⇒ Design Plans and Specifications

- Conduct an initial coordination meeting with the Village/County to confirm limits of work and discuss issues related to the design and preparation of specifications and bidding documents for the project.
- Perform field surveys and investigations necessary to complete the design and prepare the construction plans and specifications.
- Perform the necessary detailed design of the project, prepare preliminary construction cost estimates, prepare construction drawings, engineering report(s), and specifications.
- Attend meetings with the Village/County or other interested parties as may be reasonably necessary.
- Cooperate and work closely with Owner's representatives in obtaining plan and specification approval.
- Prepare the required applications and obtain necessary permits.
- Submit plans and specifications to appropriate agencies for approval, including engineering reports, if necessary.
- Provide services needed to obtain plans and specifications approval.
- Coordinate project and project needs with Grant Administrator.



Project Scope Cont.

⇒ Bidding Services

- Prepare advertisement for bids and administer the bidding process.
- Provide plans and bidding documents to prospective bidders and bidder exchange organizations.
- Answer questions regarding contract documents.
- Conduct bid opening and prepare recommendations regarding award of the construction contract.
- Prepare construction contracts and coordinate with the contractor to obtain all of the required insurance and bonding documentation.

⇒ General Administration of Construction

- Conduct a preconstruction meeting with the Contractor, Village/County, Grant Administrator, Utility companies, and other entities affected by the construction.
- Provide horizontal and vertical control staking for the various construction activities.
- Review and process shop drawings provided by the Contractor.
- Provide construction contract administration services which include processing periodic payment applications, administering any change orders that may be necessary, conducting periodic project progress meetings with the Village/County and the Contractor, answer Contractor questions, communicate with the Village/County regarding the construction progress, provide clarification and directions after consulting with the Village/County, and coordinate project close-out procedures with Grant Administrator.
- Provide full-time observation of the sewer and water construction and periodic observation of the rest of the construction to determine conformance with the plans and specifications and coordinate staking of the improvements.
- Perform final inspections and prepare final punch list.
- Prepare and provide the Village/County with record drawings, equipment manuals and other project documentation based on available field construction data.



Project Work Plan



Organizational Capabilities

GEC's professional and engineering staff are trained in a variety of fields, including municipal, environmental and wastewater engineering, stormwater management, erosion control, site planning and private development coordination. Along with our engineering staff, GEC employs numerous specialists and experts to assist our clients with their specific needs. These specialties include building inspection, land surveying, grants and funding, environmental testing and reporting, cross connection control, GIS and structural engineering

For our Municipal clients those needs often have included varied community improvement and enhancements, ranging from walking trails and parks with shelters and community centric amenities, to the more current trends of splashpads and skateparks. GEC has partnered with community non-profits and municipal leaders to see these projects come to fruition.

Our surveyor and field crew members provide a unique client benefit by ensuring all survey work meets the GEC standard of excellence and continuity of services. GEC's surveying services strengthens our engineering services by assuring all data collected is complete and easily accessible to our technical staff. Our surveying experts assist on many civil engineering projects, consult on land acquisition efforts for municipalities, write easements for municipal utilities, and prepare plats and CSMs for public and private clients.

Team Members:

- Kory D. Anderson PE - Vice President, Civil/ Municipal Project Manager
- Lukasz A. Lyzwa - Civil/ Municipal Project Engineer
- Scott S. Richardson - Senior Engineering Technician
- Richard D. Peterson - Surveying Engineering Technician
- Lynn M. Bradley - Environmental Project Manager



GEC Profile & References

Town of Dekorra

Asbestos Abatement



Town of Dekorra, Columbia County, WI was in need of converting an existing decommissioned school building into a Town Hall. The building was approximately 18,000 sq ft, and the Town was looking to reduce the size to 5,000 sq ft and conduct improvements and upgrades. The project included asbestos and lead testing, asbestos abatement, and demolition of expendable parts of the building.

General Engineering Company provided environmental expertise, asbestos and lead testing, design and structural calculations, bidding services, and construction administration.

Contact:

Holly Priske - Town Clerk - 608-635-2014



Dane County Trails

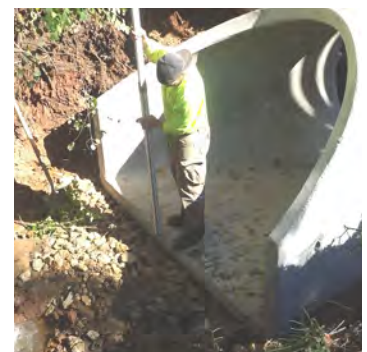
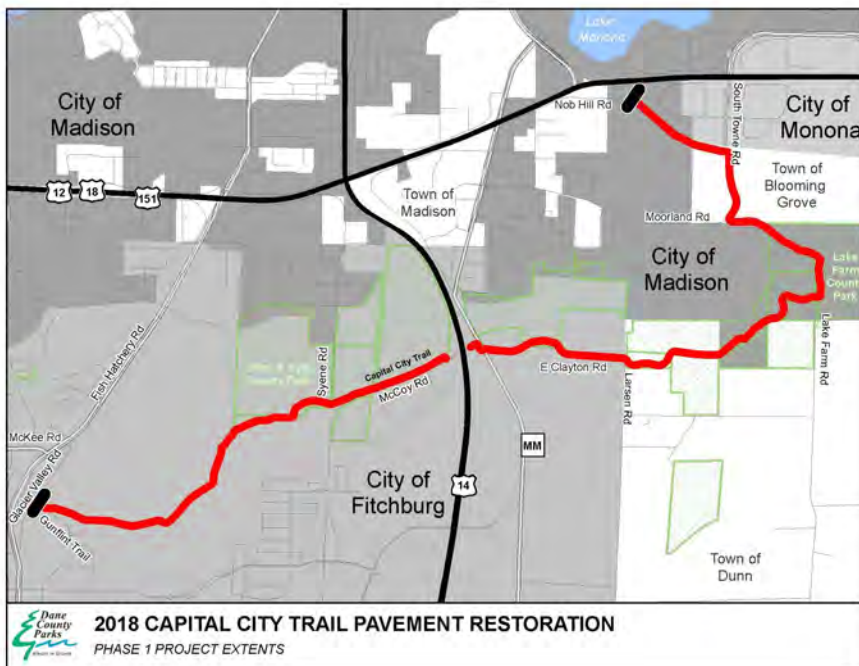
Capital City Trail



Dane County Parks started a phased upgrade to the Capital City State Trail. The trails first upgrade since its completion in 2000, with repaving the original 9.5 miles of trail from Nob Hill Road to Verona Road to improve both ride and safety. The completion of phase one included culvert replacements, gravel base and shoulder restoration, milling/pulverizing existing asphalt and new asphalt resurfacing, ADA compliant detectable warning panels at crossings, centerline striping, and signage updates with the implementation of the Capital City Trail Wayfinding Plan.

Contact:

Alex DeSmidt - Facility Planner Dane County Parks - 608-221-7212



Village of Fall River

Hometown Village Park - Fall River, WI



In 2020, the Village of Fall River sought to enhance the Hometown Village neighborhood with a playground area and picnic shelter. The shelter also is furnished with kitchen and concessions amenities for enhanced uses versatility. Located off of Lienke Road with gravel parking access and 1250 ft of walking trail has brought a welcomed amenity to the neighborhood.



GEC provided site and architectural design with stormwater and permitting services.

Contact: Craig Schultz
Director of Public Works
Fall River - 920-484-3525



Cambridge Foundation

Ripley Park - Cambridge, WI



Ripley Park, a local popular family spot in Cambridge with it's many activity amenities and sand beach, recognized a greater need for their visitors. Partnering with GEC to design a brand new shelter that offered ADA bathrooms, showers, picnic shelter, kitchen and concession area, overlooking the beach area. General Engineering Company provided building design, structural services along with site design and engineering.

Contact:
Mike Rumpf - Cambridge Foundation
mrumpf@rumpflaw.com



Portage Park & Rec

Various Parks & Amenities - Portage, WI



GEC has been involved with many projects within the City of Portage throughout our almost 110 years located in the City. Particularly, beginning in 2012, GEC became involved with several parks projects for the City and with, at times, in conjunction with several local community groups. The Goodyear Park splashpad was a community led project where GEC provided civil engineering services. Continuing from the splashpad, GEC then provided building design and structural services for new shelters containing ADA compliant restrooms, concession areas and maintenance storage at various parks throughout the City. Leading to our most recently completed additions of family skate park and band performance shelter.



Contact: Toby Monogue, Director Portage Park & Recreation - 608-742-2178 x12



Dane County Park Shelters

Cross Plains & Blue Mounds, WI



GEC's architectural and structural professionals worked with Dane County Public Works to develop bid documents for park shelter prototypes. Our architectural department provided three prototype designs, which the County used as the basis for bidding. Our structural engineers completed structural calculations and designed the connections for each shelter.

Contact:

Eric Urtes, Project Manager Dane County Public Works - 608-575-2359



Brigham Park Shelter - Blue Mounds, WI



Festge Park Shelter - Cross Plains, WI





Grants & Funding Experience

Grant Administration Projects:

General Engineering Company Grants and Funding staff completed all aspects of the funding process for the Community Development Block Grant projects listed below. This worked included funding opportunity research, application completion, comprehensive administration services, and project close out process.

- 2019 Town of Oshkosh Winnebago Area Utilities Feasibility Study
⇒ CDBG-Planning
- 2018 Village of Poynette Utility and Street Improvements (Pearl/Hudson/Tomlinson Streets)
⇒ CDBG-Public Facilities
- 2017 City of Markesan Street and Utility Reconstruction
⇒ CDBG-Public Facilities & DNR Clean Water Fund/Safe Drinking Water Loan Program
- 2012 Village of Wyocena Water Tower Maintenance & Water Meter Upgrades
⇒ CDBG-Public Facilities
- 2010 Village of Pardeeville Park Lake Overflow Spillway & Dam Improvements
⇒ CDBG-Emergency Assistance Program
- 2009 City of Markesan Street and Utility Reconstruction
⇒ CDBG-Public Facilities & USDA-Rural Development
- 2008 Town of Dekorra Town Road Improvements
⇒ CDBG-Emergency Assistance Program



References

Alex DeSmidt—Facility Planner Dane County Parks
608-221-7212

Mike Rumpf—Cambridge Foundation
mrumpf@rumpflaw.com

Toby Monogue—Director Portage Park & Recreation
608-742-2178 x12

Craig Schultz—Director of Public Works, Village of Fall River
920-484-3525

Eric Urtes—Project Manager Dane County Public Works
608-575-2359

Holly J. Priske—Town Clerk, Town of Dekorra
608-635-2014



Project Team



Project Team - Portage Office

Kory D. Anderson P.E.,
Vice President



B.S. Civil Engineering - University of Minnesota - Minneapolis, MN
Civil Engineering - University of Wisconsin - Platteville, WI

Mr. Anderson has over 25 years of experience in construction and engineering-related fields. Kory has been with General Engineering Company for 24 years. His **principal engineering expertise is in municipal engineering**. Mr. Anderson's projects have included street and utility rehabilitation, dam rehabilitation, facilities planning, state and federal grants, sanitary sewer design, lift station design, storm sewer design, site grading, hydrology studies, street improvement design, water main design, wastewater treatment design, Phase I environmental site assessments, and surveying. GEC's municipal clients have leaned on the benefit of Kory's depth of experience and insight as an engineering professional partner.

Lukasz A. Lyzwa
Project Engineer



B.S. Environmental Engineering – Kielce University of Technology - Poland EU

Mr. Lyzwa joined General Engineering Company as a Staff Civil Engineer in September 2014, quickly grew his own client base and now serves GEC clients in a **Project Manager** role. Since joining GEC, Mr. Lyzwa's experience has been primarily with municipal clients, involved in projects including wastewater treatment upgrades, water and sewer projects, transportation and site development. Centralizing his vision on a clients best interest while being mindful of budget constraints is where Lukasz has gained the trust of his clients.

Scott R. Richardson
Senior Engineering Technician



University of Wisconsin-Platteville, Platteville, WI
B.S. Degree in Industrial Technology Management
Emphasis in Drafting and Design

Mr. Richardson joined GEC as an Engineering Technician 20 years ago. His drafting and design experience and educational background have been a valuable asset in the design of civil engineering projects. Since joining the firm, Scott has proven to be an asset to clients as well. While building his project portfolio, Mr. Richardson has become a primary staff member to which company principals rely on for project completion with exceptional results.

Lynn M. Bradley
Environmental PM

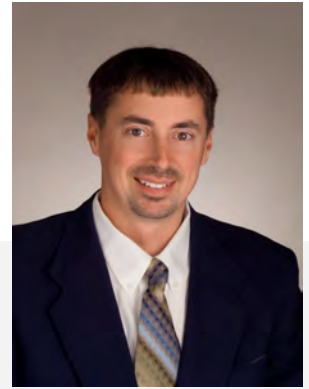


Associate Degree - Moraine Park Technical College, Fond du Lac
Mine Safety Training - U.S. Department of Labor, Mine Safety and Health Administration

Ms. Bradley has been with General Engineering Company as a Senior Environmental Project Manager for over 13 years and has an additional 19 years of Environmental Consulting experience. Lynn has several areas of environmental expertise, including environmental site assessments (Phase I and Phase II ESAs) for industrial and private clients, financial institutions and attorneys. These assessments include site inspections, interviews, record searches, research, development of sampling recommendations, reporting writing, and performance of a variety of sampling efforts.

KORY D. ANDERSON, PE, CDT

Vice President



EDUCATION

B.S. Civil Engineering - University of Minnesota - Minneapolis, MN
Civil Engineering - University of Wisconsin - Platteville, WI

REGISTRATION/AFFILIATIONS

Registered Professional Engineer in the States of Wisconsin, Illinois, Iowa, and Minnesota
Construction Specifications Institute (CSI)
Construction Documents Technologist (CDT)
Numerous Engineering Seminars and Professional Development Courses

EXPERIENCE

Mr. Anderson has over 25 years of experience in construction and engineering-related fields. Kory has been with General Engineering Company for 24 years. His principal engineering expertise is in **municipal engineering**. Mr. Anderson's projects have included street and utility rehabilitation, dam rehabilitation, facilities planning, state and federal grants, sanitary sewer design, lift station design, storm sewer design, site grading, hydrology studies, street improvement design, water main design, wastewater treatment design, Phase I environmental site assessments, and surveying.

Representative assignments include construction management, zoning administration, comprehensive planning, engineering reports, Phase I environmental site assessments, cost estimates, assessments, design, specifications, bidding documents, engineering inspections, stormwater planning, and DNR water regulatory permits.

Representative Projects Include:

- Dane County Department of Public Works
 - Capital City Trail Rehab, Culvert & Bridge Replacement
 - Schumacher Farms Civil, Site & Surveying
- Dane County Towns Association
 - Zoning Administrator
- City of Portage
 - 2012/2013/2014/2016 Water Main & Sanitary Sewer Reconstruction Projects
 - Hwy 33 East Water Main Extension
 - Industrial Park Expansion
 - 2008 WIDOT STH 33/E. Cook St., Street & Utility Improvements
 - Portage Skate Park
 - Various Street and Utility Improvements
 - City Wide Stormwater Management Study
 - Various Alley Improvement Projects
 - Various Sidewalk Improvement Projects
 - Various Storm Sewer Improvements
- City of Wisconsin Dells
 - Fort Dells Lift Station, Force Main, & Gravity Sewer Improvements
 - Chula Vista Parkway Utility & Street Improvements
- Village of Belleville
 - Zoning Administrator
- Village of Randolph
 - Zoning Administrator
- Village of Wyocena
 - Zoning Administrator
- Village of Fall River
 - Village Engineer/Zoning Administrator
 - S. Main Street Sewer Rehabilitation
 - Prairie Street Utility and Street Improvements
 - Church Street Lift Station and Sanitary Sewer Interceptor
 - Industrial Park - Quality Court Utility and Street Extensions (4 phases)
 - Steel Road Street Improvements
 - 2003 WIDOT Main St. (CTH D) San. Sewer & WM Reconstruction
 - South Street Utility and Street Improvements
- City of Loyal
 - City Engineer
 - Municipal Wells and Storage Facility
 - Industrial Park Expansion
 - 2017 WIDOT STH 98 Sanitary Sewer & Watermain Reconstruction
- Village of Poynette
 - Village Engineer
- Town of Fountain Prairie
 - Various Road Improvements
- City of Monona
 - Interim City Planner



LUKASZ A. LYZWA

Project Engineer



EDUCATION

B.S. Environmental Engineering – Kielce University of Technology - Poland EU

EXPERIENCE

Mr. Lyzwa joined General Engineering Company as a Staff Civil Engineer in September 2014. Mr. Lyzwa's experience and educational background has already proven to be an asset in the design of environmental engineering projects that he has been involved with at GEC. Previously using his expertise in a commercial capacity, Lukasz was able to hone skills of communication, team work, problem solving and meeting high quality standards. Lukasz has been able to directly apply those skills to his projects at GEC.

Mr. Lyzwa's education, experience and dedication have already proven to be an asset to the clients of General Engineering Company in the design of environmental engineering projects.

Representative Projects Include:

Dane County Public Works Projects

Capital City Trail Rehab, Culvert & Bridge Replacement
Schumacher Farms Civil, Site & Surveying

Dane County, WI
Dane County, WI

Treatment System Projects

WWTP Upgrade Abbyland Foods, Inc.
Crystal Lake Wastewater Treatment System Rehabilitation
Portage WWTP Influent Screw Pump Rehabilitation Project
Main Lift Station Modifications (Vertical Screen System)
Kelly Lake Sanitary District Upgrades
Wastewater Treatment Facility Upgrades

City of Abbotsford, WI
T. of West Point/T. of Roxbury, WI
City of Portage, WI
Village of Fall River, WI
Kelly Lake, WI
Village of Coloma, WI

Water and Sewer Projects

Sausage Plant Sanitary Sewer
2016 Street & Utility Project
2017 Street & Utility Project
Kuck Sewer Interceptor Project

City of Abbotsford, WI
City of Portage, WI
City of Markesan, WI
Village of Fall River, WI

Transportation Projects

Swan Vista Road Construction Project (Portage Country Club)
Train/Laird Road Construction Project
Sweden, Johnson, Woodhallow, Dokkebakken
Bridge Replacement Projects

Town of Wyocena, WI
Town of Clyman, WI

Town of Onalaska, WI

Site Development Projects

Anytime Fitness Development
Tree House Development Wilderness
Panera Bread Retail Development

City of Mauston, WI
V. of Lake Delton, WI
V. of Lake Delton, WI



SCOTT R. RICHARDSON

Senior Engineering Technician



EDUCATION

University of Wisconsin-Platteville, Platteville, WI
Bachelor of Science Degree in Industrial Technology Management
Emphasis in Drafting and *Design*

EXPERIENCE

Mr. Richardson joined us as an Engineering Technician at General Engineering Company 20 years ago. Mr. Richardson's drafting and design experience and educational background have been an asset in the design of civil engineering projects. He has experience in the following areas:

Computer Assisted Drafting (CAD);

Primarily for design conception through construction including multiple phases of civil projects including sanitary sewer, water main, and street rehabilitation, drafting of surveying documents, CSM's and plats and construction.

Construction Surveying & Staking, Data Collection;

Assisting in the staking and topography of various phases of municipal and private development including building location, sewer and water main location, and final street grading.

Representative projects:

Wilderness Hotel & Golf Resort Development, Lake Delton
Tanger Outlet Mall Development, Lake Delton
Bank of Wisconsin Dells Building Addition, Wisconsin Dells
Chula Vista Resort, Wisconsin Dells
Cook Street Streetscape, Portage
Dells Army Ducks Zipline, Lake Delton
Columbus Dam Improvements



RICHARD D. PETERSON

Engineering Technician

EDUCATION

Fox Valley Technical College, Appleton, WI
Associate Degree – Applied Science in Natural Resources

EXPERIENCE

Mr. Peterson is currently an Engineering Technician at General Engineering Company. His experience is in the following areas:

Construction Surveying and Staking;
Sanitary sewer, water main, street, curb and gutter, building layout, storm sewer, and topographic mapping.

Data Collection;
Utilizing robotic total station, level for streets, buildings; topography of large and small acreages.

Computer Assisted Design (CAD);
For municipal projects computation and mapping contours for topographic mapping.

Mr. Peterson came to General Engineering Company 16 years ago with 4 years of prior experience in construction staking, finalized cut sheets, topography drafting, and courthouse research.



LYNN M. BRADLEY

Environmental Project Manager



EDUCATION

Associate Degree - Moraine Park Technical College, Fond du Lac
Mine Safety Training - U.S. Department of Labor, Mine Safety and Health Administration

REGISTRATION

WI Department of Natural Resources Registered PECFA Consultant
Nuclear Density Gauge Operation Training, Aguinaga Technical Services
DATCP Certified Tank Assessor
Small Water Operator Certification

PROFILE & EXPERIENCE

Ms. Bradley has been with General Engineering Company as a Senior Environmental Project Manager for over 13 years and has an additional 19 years of Environmental Consulting experience. Lynn has several areas of environmental expertise, including environmental site assessments (Phase I and Phase II ESAs) for industrial and private clients, financial institutions and attorneys. These assessments include site inspections, interviews, record searches, research, development of sampling recommendations, reporting writing, and performance of a variety of sampling efforts.

Another area of Ms. Bradley's expertise is providing subsurface investigations, groundwater and soil remedial activities, along with preparation of WDNR environmental permits. DNR permits include off-site exemptions, exemptions to build on a landfill, and brownfield grants.

Ms. Bradley is also experienced in collection field data for project analysis, documenting occurrences of contamination, sampling monitoring wells, private well sampling, and overseeing underground storage tank removals.

Expertise Areas:

Environmental Liaison and Coordination: Ms. Bradley provides expert representation and coordination between clients and regulatory and public agencies with clear, direct communication throughout a project lifecycle while centered on the clients best interest.

Phase I ESAs & Phase II ESAs (Environmental Site Assessments): Ms. Bradley performs numerous Phase I & II ESAs (in accordance with latest ASTM standards) including soil borings, soil sampling, and groundwater sampling during property transactions to determine the presence or absence of contamination on the property.

Soil & Groundwater Investigations: Ms. Bradley has completed many soil and groundwater and vapor investigations, including petroleum, chlorinated solvents and other contaminants to assist clients in assessing level of contamination within a site and the need for remediation, if any.

Remediation: Ms. Bradley has worked on many cleanups requiring active remediation, including site specific options to best address the contamination and identify the most timely and cost effective method to completing the cleanup in accordance with State and Federal requirements.

Tank Site Assessment: Ms. Bradley has completed countless tank site assessments including all soil sampling required by the State of Wisconsin.

Brownfield Site Assessment Grants: Ms. Bradley has performed brownfield assessments primarily using municipalities to apply for the grant with a public/private partnership to develop the property.

Transaction Screen Analysis (TSA): Ms. Bradley has performed several TSAs that provides a generally acceptable degree of confidence regarding the environmental conditions of the property and whether a Phase I ESA or additional investigation is required.





Fee Schedule



Availability & Tentative Timetable (example of dates)

Notice to Proceed	June 15, 2021
Field Survey	June 21, 2021 (within one week)
30% Plan Review	June 28, 2021 (within one week)
60% Plan Review	July 5, 2021 (within one week)
Bidding	June 26, 2021 (within 2 weeks)
Construction	As required
As-Built/ Close out	Fall/Winer 2021

Based on the schedule above, this will fit well for our company's staff availability and current work load.

Fees

Item	Description	Price
1	Design Plans and Specifications	\$18,000
2	Bidding Services	\$6,000
3	General Administration of Construction	\$14,000
Fixed Fee		\$38,000

Key Personnel Involve in the project

Rich Peterson— Technician

Site Survey and Data Collection

Scott Richardson—Technician

Site Layout and Design Preparation

Lukasz Lyzwa— Project Engineer

Project Coordination, Specifications Preparation, Bidding Services,
Construction Administration, Meeting Attendance, and
Communication

Kory Anderson—Principal

Team Support, and Management

Lynn Bradley—Project Manager

Environmental Expertise and Support

**Per the US Small Business Administration standards, General
Engineering Company is a small business.**



Engineers • Consultants • Inspectors

2021 ENGINEERING RATE SCHEDULE

Principal	\$130/hr - \$155/hr
Project Engineer or Project Manager	\$90/hr - \$125/hr
Registered Land Surveyor	\$100/hr
Staff Engineer	\$85 - \$105/hr
Technician	\$60 - \$95/hr
Zoning Administrator	\$125 - \$140/hr
Field Crew Chief (1 person Total Station)	\$72.50/hr
Field Crew Chief (1 person GPS)	\$145/hr
Land Survey Crew	\$145/hr
Expert Witness	\$300/hr
Building Inspector	\$75 - \$95/hr
Grant & Funding Staff	\$75 - \$95/hr
Administration and Support Staff	\$45/hr

General Engineering Company

916 Silver Lake Drive
PO Box 340
Portage, WI 53901
Phone: 608-742-2169
Fax: 608-742-2592

Division of Energy, Housing and Community Resources

Lobbying Certification

GRANTEE/UGLG NAME: Richland County
DEHCR GRANT AGREEMENT #: CDBG CL-PF 21-33

LOBBYING CERTIFICATION FROM THE

☐ Municipality/UGLG: _____
☒ Contractor/Sub-Contractor
☐ Other: _____

The undersigned certifies, to the best of his/her knowledge and belief, that:

1. No federal appropriated funds have been paid or will be paid, by or on behalf of the undersigned, to any person for influencing or attempting to influence an officer or employee of an agency, a Member of Congress, an officer or employee of Congress, or an employee of a Member of Congress in connection with the awarding of any federal contract, the making of any federal grant, the making of any federal loan, the entering into of any cooperative agreement, and the extension, continuation, renewal, amendment, or modification of any federal contract, grant, loan, or cooperative agreement.
2. If any funds other than federal appropriated funds have been paid or will be paid to any person for influencing or attempting to influence an officer or employee of any agency, a Member of Congress, an officer or employee of Congress, or an employee of a Member of Congress in connection with this federal contract, grant, loan, or cooperative agreement, the undersigned shall complete Standard Form-LLL, "Disclosure Form to Report Lobbying," in accordance with its instructions.
3. The undersigned shall require that the language of this certification be included in the award documents for all sub-awards at all tiers (including sub-contracts, sub-grants, and contracts under grants, loans, and cooperative agreements) and that all sub-recipients shall certify and disclose accordingly.

This certification is a material representation of fact upon which reliance was placed when this transaction was made or entered into. Submission of this certification is a prerequisite for making or entering into this transaction imposed by section 1352, title 31, U.S. Code. Any person who fails to file the required certification shall be subject to a civil penalty of not less than \$10,000 and not more than \$100,000 for each such failure.

General Engineering Company

Name of Municipality/UGLG/Business/Firm


Signature of the Chief Elected Official, Owner, or Chief Executive Officer

President
Title

05/14/21
Date Signed

Bradley R. Boettcher

Printed Name of the Chief Elected Official, Owner, or Chief Executive Officer

Division of Energy, Housing and Community Resources (DEHCR)

Community Development Block Grant – Potential Conflict of Interest Disclosure

POTENTIAL CONFLICT OF INTEREST DISCLOSURE

**Community Development Block Grant – CDBG-CLOSE Program
Richland County, WI**

Do you have family or business ties to any of the people listed below?

Yes ☐

No ☒

If yes, please check the box next to the name(s) of the individual(s) and describe the relationship in the space provided below:

ELECTED OFFICIALS:

- ☐ Marty Brewer – Richland County Board - Chairman
- ☐ Dave Turk – Richland County Board – Vice Chairman
- ☐ Sean Murphy-Lopez – Richland County Finance Committee - Chairman

COUNTY OF RICHLAND - ADMINISTRATION, DEPARTMENT HEADS AND LEGAL COUNSEL:

- ☐ Clinton Langreck – County Administrator
- ☐ Jasen Glasbrenner – Richland Economic Development Director

Description of Relationship(s):

Please Note: The name of any bidder with a potential conflict of interest will be disclosed at the Richland County Board and Committee meeting in which bids are discussed. Potential conflicts of interest will be reviewed in accordance with 24 CFR 570.489(h).

Lubast Lyeva
Printed Name of Individual

Project Engineer
Title

[Signature]
Signature

General Engineering Company
Name of Business/Firm/Company

5/14/2021
Date Signed [MM/DD/YYYY]

General Engineering Company
P.O. Box 340
916 Silver Lake Drive
Portage, WI 53901



Engineers • Consultants • Inspectors

608-742-2169 (Office)
608-742-2592 (Fax)
gec@generalengineering.net
www.generalengineering.net

AGREEMENT FOR ENGINEERING SERVICES

This Agreement for Engineering Services ("**Agreement**") is made and effective this _____ day of _____, 2021, by and between Client and Engineer.

ARTICLE 1 – FUNDAMENTAL TERMS

- 1.1. "**Client**" shall mean _____ and its agents, employees, and authorized representatives. Client has an address of P.O. Box 248, Whoville, Wisconsin 53959.
- 1.2. "**Engineer**" shall mean General Engineering Company and its agents, employees, and authorized representatives.
- 1.3. **Project Name & Location.** The name of the project (the "Project") and its relative location is as follows:
- 1.4. **Project Scope.** Engineer shall provide the services relative to the Project as listed in Exhibit A pursuant to this Agreement (collectively, the "**Work**"). The Work is performed for the sole use and benefit of Client.
- 1.5. **Compensation.** Client shall compensate Engineer for the Work as follows:

____ Task 1:

____ Task 2:

Time and expense and lump sum contracts do not include expenses and permit fees unless specifically noted. Expenses and permit fees will be invoiced separately from the contract amount. In the event Engineer provides services beyond those provided in Exhibit A at the direction of Client, then Client shall pay Engineer for all such services based on the then current hourly rates (Exhibit B), plus expenses and permit fees, if any. Invoices shall be submitted to Client from time to time and payment is due upon receipt of an invoice. Past due balances shall be subject to a late payment penalty charge at the rate of 1.5% per month (i.e., 18% per annum). In addition, Engineer may, after giving seven (7) days written notice, suspend service under this Agreement until Client has paid in full all amounts due for services rendered and expenses incurred, including any late payment penalty charges. In the event that Engineer suspends service under this Agreement for nonpayment, Client agrees to waive any claim against Engineer and hold it harmless from any claims for loss resulting from the cessation of service.

This Agreement is subject to the terms and conditions as shown on Exhibit B. Engineer and Client have entered into this Agreement as of the date first written above.

CLIENT:

By: _____

ENGINEER:

General Engineering Company

By: _____

Portage

•

Black River Falls

•

La Crosse



Consulting Engineering • Structural Engineering • Environmental Services • Building Inspection • Cross Connection Control
Grants & Funding Services • Land Surveying • Zoning Administration • Mechanical, Electrical, & Plumbing Services • GIS Services



EXHIBIT B

ARTICLE 2 - PROJECT ASSUMPTIONS

Exhibit A sets forth the assumptions upon which Engineer agrees to, and will perform, the Work. This Agreement is subject to all assumptions set forth in Exhibit A.

ARTICLE 3 - PERFORMANCE OF THE WORK

The Work shall be completed in a good and workmanlike manner in accordance with the customary standards of the industry.

ARTICLE 4 - ACKNOWLEDGMENTS AND LIMITATIONS

- 4.1. Acknowledgments.** Notwithstanding anything to the contrary in this Agreement, Client acknowledges and agrees that: (i) Engineer shall be entitled to rely upon the adequacy, accuracy and completeness of any and all information and documents that Client provides to Engineer relative to the Work; and (ii) Engineer shall neither have control over or charge of, nor be responsible for, the acts of Client, or any other persons or entities, with respect to the Work.
- 4.2. Limitations.** Engineer shall not perform, provide, or engage in any of the following: (i) any procedure or service that may damage any improvement or a component of any improvement; (ii) any procedure or service that may be dangerous to Engineer; (iii) the movement or removal of personal property, equipment, vegetation, snow, ice, or debris; (iv) except as otherwise provided in Exhibit A, the movement or excavation of earth; (v) except to the extent provided to Engineer by Client, the review of any public records or other documents or information relating to the Work; or (vi) other limitations set forth in Exhibit A.

ARTICLE 5 - WARRANTIES AND REPRESENTATIONS

- 5.1. Client Warranties.** Client represents and warrants that as of the date of this Agreement and throughout the term of this Agreement: (i) Client has the power and authority to enter into and perform its obligations under this Agreement; (ii) Client shall perform all of its responsibilities under this Agreement utilizing reasonable care and skill in accordance with customary industry standards; (iii) Client has provided to Engineer any and all information and documents that Client is in possession of or of which it has knowledge of relative to the Work; (iv) Client has no knowledge of any facts, information, or documents relevant to the Work not disclosed to Engineer; (v) all documents and information provided to Engineer by Client relevant to the Work are truthful and accurate in all respects; (vi) there are no third parties who are the intended beneficiaries of the Work; and (vii) Client has examined and approved Exhibit A. Client's representations and warranties shall survive the termination, suspension or completion of this Agreement.
- 5.2. Disclaimer.** OTHER THAN AS EXPRESSLY PROVIDED IN THIS AGREEMENT, ENGINEER MAKES AND GIVES NO OTHER REPRESENTATIONS OR WARRANTIES WHATSOEVER AND EXPRESSLY DISCLAIMS ALL OTHER WARRANTIES, WHETHER EXPRESS, IMPLIED OR STATUTORY, INCLUDING, BUT NOT LIMITED TO, ALL WARRANTIES OF MERCHANTABILITY AND FITNESS FOR A PARTICULAR PURPOSE AND WARRANTIES ARISING FROM COURSE OF DEALING OR USAGE OF TRADE. THE SERVICES PROVIDED HEREUNDER BY ENGINEER SHALL NOT BE, NOR ARE THEY INTENDED TO BE, A GUARANTY OR WARRANTY.

ARTICLE 6 - MISCELLANEOUS

- 6.1. Insurance.** Client is responsible for providing any necessary insurance relating to the Work. Client waives all rights of subrogation, and all insurance secured or maintained by Client shall contain a waiver of subrogation in favor of Engineer. Engineer agrees to obtain and maintain, at Engineer's expense, Commercial General Liability Insurance and Workers' Compensation Insurance.
- 6.2. Enforcement.** In the event of any litigation between the parties arising out of or in any way related to this Agreement, the unsuccessful party to such litigation shall pay to the successful party all costs and expenses, including, but not limited to, reasonable attorneys' fees and litigation costs, incurred therein by such successful party, which costs, expenses and attorneys' fees shall be included in and as a part of any judgment rendered in such litigation.
- 6.3. Statute of Limitations.** Any statute of limitations applicable to this Agreement or the services provided by Engineer under this Agreement shall commence to run, and any alleged cause of action shall be deemed to have accrued, upon the completion of the Work. Client acknowledges that this limitation on the applicable statute of limitations is a material term of this Agreement and a material factor in the determination of the fee charged by Engineer.
- 6.4. Use and Ownership of Materials.** All documents, design notes, tracings, computer files, and other materials and documents of Engineer created or acquired in furtherance of the provision of the services to be provided under this Agreement (the "**Project Materials**") are and shall remain the property of Engineer. Client agrees that it shall not, directly or indirectly, at any time reveal, report, publish, disclose or transfer the Project Materials to any person or entity without the advance written consent of Engineer. Client shall defend, indemnify and hold harmless Engineer, its officers, directors, managers, agents and employees, or any of them from and against all injuries, claims, losses or damages whatsoever arising out of or resulting from the unauthorized reporting, publication, disclosure or transmittal of the Project Materials, whether in contract or tort, including, but not limited to, attorneys' fees and litigation costs.
- 6.5. Indemnification.** To the fullest extent permitted by law, Client shall defend, indemnify and hold harmless Engineer, its officers, directors, managers, agents and employees, or any of them from and against all injuries, claims, losses or damages whatsoever arising out of or in any way related to this Agreement from any cause or causes, whether in contract or tort, including, but not

limited to attorneys' fees and litigation costs, excepting only those injuries, claims, losses or damages caused by the negligent acts or omissions of Engineer.

- 6.6. Limitation on Liability.** NOTWITHSTANDING ANYTHING TO THE CONTRARY IN THIS AGREEMENT, ENGINEER'S LIABILITY TO CLIENT FOR ANY AND ALL INJURIES, CLAIMS, LOSSES OR DAMAGES WHATSOEVER ARISING OUT OF OR IN ANY WAY RELATED TO THIS AGREEMENT FROM ANY CAUSE OR CAUSES, WHETHER IN CONTRACT OR TORT, SHALL BE LIMITED TO CLIENT'S DIRECT DAMAGES AND SHALL NOT EXCEED, INCLUDING ATTORNEY FEES AND LITIGATION COSTS, THE SUM PAID BY CLIENT TO ENGINEER PURSUANT TO THIS AGREEMENT. IN NO EVENT SHALL EITHER PARTY BE LIABLE FOR INCIDENTAL, SPECIAL, CONSEQUENTIAL, OR EXEMPLARY DAMAGES EVEN IF IT HAS PREVIOUSLY BEEN ADVISED OF THE POSSIBILITY OF SUCH DAMAGES OR THE DAMAGES WERE OTHERWISE FORESEEABLE. THE PARTIES HAVE AGREED THAT THE LIMITATIONS SPECIFIED IN THIS SECTION 6.6. SHALL SURVIVE AND APPLY EVEN IF THE LIMITED REMEDY IS FOUND TO HAVE FAILED OF ITS ESSENTIAL PURPOSE. CLIENT ACKNOWLEDGES AND AGREES THAT IT WOULD BE UNREASONABLE FOR ENGINEER TO ASSUME AN UNLIMITED AMOUNT OF LIABILITY IN RETURN FOR PERFORMING THE WORK, AND CLIENT ACKNOWLEDGES THAT THIS LIMITATION ON ENGINEER'S LIABILITY IS A MATERIAL TERM OF THIS AGREEMENT AND A MATERIAL FACTOR IN THE DETERMINATION OF THE FEE CHARGED BY ENGINEER.
- 6.7. Amendment of Agreement.** This Agreement may be amended, modified, or superseded only by a written instrument executed by all of the parties to this Agreement.
- 6.8. Waiver.** The failure of any party at any time or times to require performance of any provision of this Agreement shall in no manner affect the right at a later time to enforce that provision. No waiver by any party of any breach of any term contained in this Agreement, whether by conduct or otherwise, in any one or more instances, shall be deemed to be or construed as a further or continuing waiver of any such breach or a waiver of any other term contained in this Agreement.
- 6.9. Severability.** If any covenant, term or provision of this Agreement is held to be invalid or unenforceable for any reason, it is agreed that such invalidity or unenforceability shall not affect any other covenant, term or provision of this Agreement, and that the remaining covenants, terms, and provisions, or portions thereof, shall remain in full force and effect.
- 6.10. Counterparts and Copies.** This Agreement may be fully executed in separate counterparts by each of the parties hereto, such counterparts when combined constituting but one and the same instrument. Such counterparts may be exchanged electronically via e-mail or facsimile transmission, which shall be deemed an original. A copy of this Agreement shall have the same full force and effect as the original.
- 6.11. Successors and Assigns.** Neither party may assign any of its rights or delegate any of its obligations hereunder without the prior written consent of the other party. This Agreement shall inure to the benefit of and be binding upon each of the parties hereto and their respective successors and allowed assigns.
- 6.12. Jurisdiction and Governing Law.** All actions or proceedings in any manner relating to or arising out of this Agreement may be brought only in courts of the State of Wisconsin located in Columbia County, and Client hereby consents to the jurisdiction of such court. Client hereby waives any objection to the venue of such court. This Agreement shall be governed by the laws (excluding conflicts of laws rules) of the State of Wisconsin.
- 6.13. Integration.** This Agreement constitutes the entire agreement between the parties hereto pertaining to the subject matters hereof and supersedes all negotiations, preliminary agreements and all prior or contemporaneous discussions and understandings of the parties hereto in connection with the subject matters hereof.
- 6.14. Force Majeure.** Engineer shall not be liable for any failure of or delay in the performance of any obligation hereunder for the period that such failure or delay is due to Acts of God, governmental actions, or any other cause beyond Engineer's absolute control. Upon the occurrence of any such event, the time required for performance by Engineer of its obligations arising under this Agreement shall be extended by a period equal to the duration of such event.
- 6.15. Lien Notice.** AS REQUIRED BY THE WISCONSIN CONSTRUCTION LIEN LAW, ENGINEER HEREBY NOTIFIES CLIENT THAT PERSONS OR COMPANIES FURNISHING LABOR OR MATERIALS FOR THE IMPROVEMENTS ON CLIENT'S LAND MAY HAVE LIEN RIGHTS ON CLIENT'S LAND AND BUILDINGS IF NOT PAID. THOSE ENTITLED TO LIEN RIGHTS, IN ADDITION TO THE UNDERSIGNED ENGINEER, ARE THOSE WHO CONTRACT DIRECTLY WITH THE CLIENT OR THOSE WHO GIVE THE CLIENT NOTICE WITHIN 60 DAYS AFTER THEY FIRST FURNISH LABOR OR MATERIALS FOR THE IMPROVEMENTS. ACCORDINGLY, CLIENT PROBABLY WILL RECEIVE NOTICES FROM THOSE WHO FURNISH LABOR OR MATERIALS FOR THE IMPROVEMENTS, AND SHOULD GIVE A COPY OF EACH NOTICE RECEIVED TO THE MORTGAGE LENDER, IF ANY. ENGINEER AGREES TO COOPERATE WITH THE CLIENT AND CLIENT'S LENDER, IF ANY, TO SEE THAT ALL POTENTIAL LIEN CLAIMANTS ARE DULY PAID.

ARTICLE 7 – CURRENT HOURLY RATES

Hourly rates for 2021 for Additional Services are as follows:

Expert Witness	\$300/hr	Registered Land Surveyor	\$100/hr
Principal	\$130/hr - \$155/hr	Field Crew Chief (1 person Total Station)	\$72.50/hr
Project Engineer or Project Manager	\$90/hr - \$125/hr	Field Crew Chief (1 person GPS)	\$145/hr
Staff Engineer	\$85 - \$105/hr	Land Survey Crew	\$145/hr
Technician	\$60 - \$95/hr	Grant & Funding Staff	\$75 - \$95/hr
GIS Staff	\$60 - \$90/hr	Administration and Support Staff	\$45/hr
Building Inspector	\$75 - \$95/hr		

Portage

Black River Falls

La Crosse

