

# Health and Human Services Orientation

---

WELCOME & REVIEW OF REQUIRED SERVICES

# WELCOME!!

---

## SCHEDULE

1:00 Welcome (Tricia Clements)

*1:15 Placement explanation*

1:30 Administrative Services (*Angie Rizner*)

*and Business and Financial Services (Stephanie Ronnfeldt)*

1:50 Economic Support Services (*Briana Turk and Darin Steinmetz* )

2:10 Behavioral Health Services (*Myranda Culver & Laurie Couey & Sharon Pasold*)

**2:30 BREAK**

2:45 Child & Youth Services (*Jessica Tisdale*)

3:05 Public Health & Nutrition (*Rose Kohout*)

3:25 Aging & Disability Resource Center (*Roxanne Klubertanz-Gerber*)

4:00 Tour of Community Services Building(*Tricia Clements & Angie Rizner*)

# Required Programs & Services

Counties Administer State Programs



# State of Wisconsin Mandates Affecting County Health and Human Services Agencies

---

**Child Welfare Services:** *Child Protection, Child Abuse Investigations, Foster Care & Institutional Care, Reunification Services, and Termination of Parental Rights*

**Juvenile Delinquency Services:** *Services to rehabilitate juvenile delinquents and protect community from juvenile crime including placement in state operated correctional facilities*

**Long Term Support Services:** *Disabilities Benefit Specialist, Resource Center, Eligibility Determination for managed care, and Children's Long Term Support Waiver*

**Birth to Three:** *Early Intervention, Special Education, and Related Services to children with disabilities*

**Aging Services:** *Elderly Benefit Specialist, Congregate & Home Delivered Meals, Transportation and Family Caregiver Support, and Adult Protective Services*

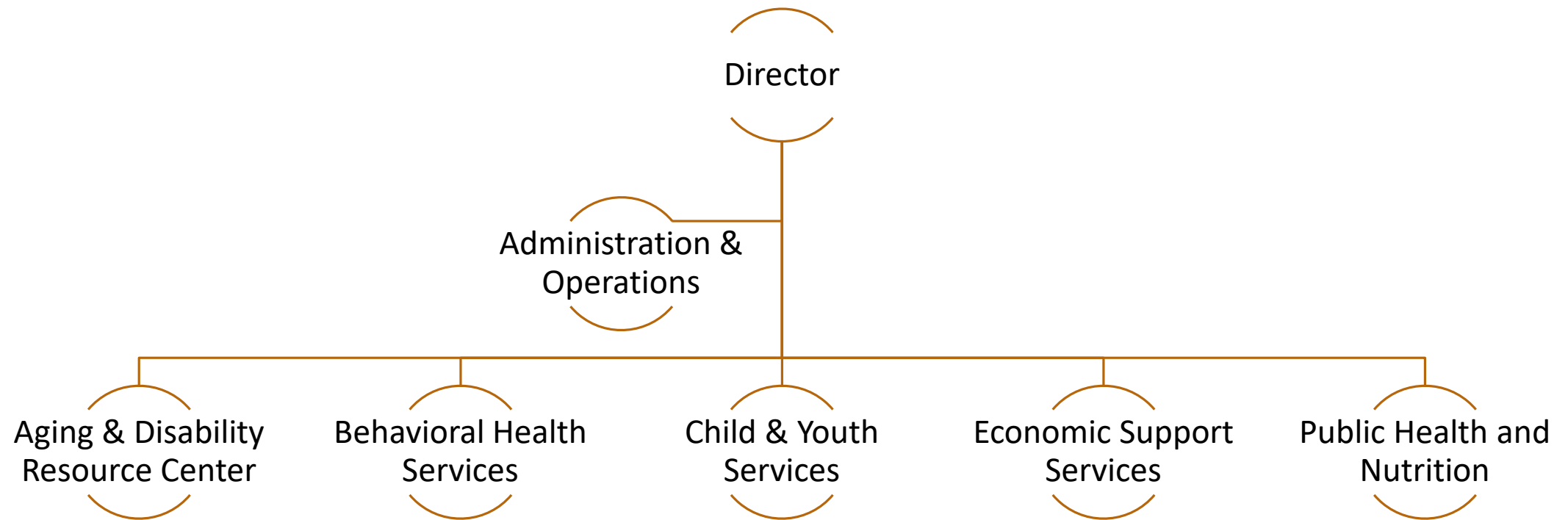
**Mental Health and Substance Abuse Services:** *Counties have some flexibility to determine the type and levels of services including outpatient clinic, community support, targeted case management, and comprehensive community services.*

**Economic Support Services:** *Administration of Medical Assistance, Food Share, Energy Assistance, Child Care Certification*

**Health Division:** *Local Public Health Officer, Communicable Disease Investigation and Monitoring, Maternal and Child Health, Environmental Health, Prevention, Early Intervention, and Education*

# Richland County Health and Human Services

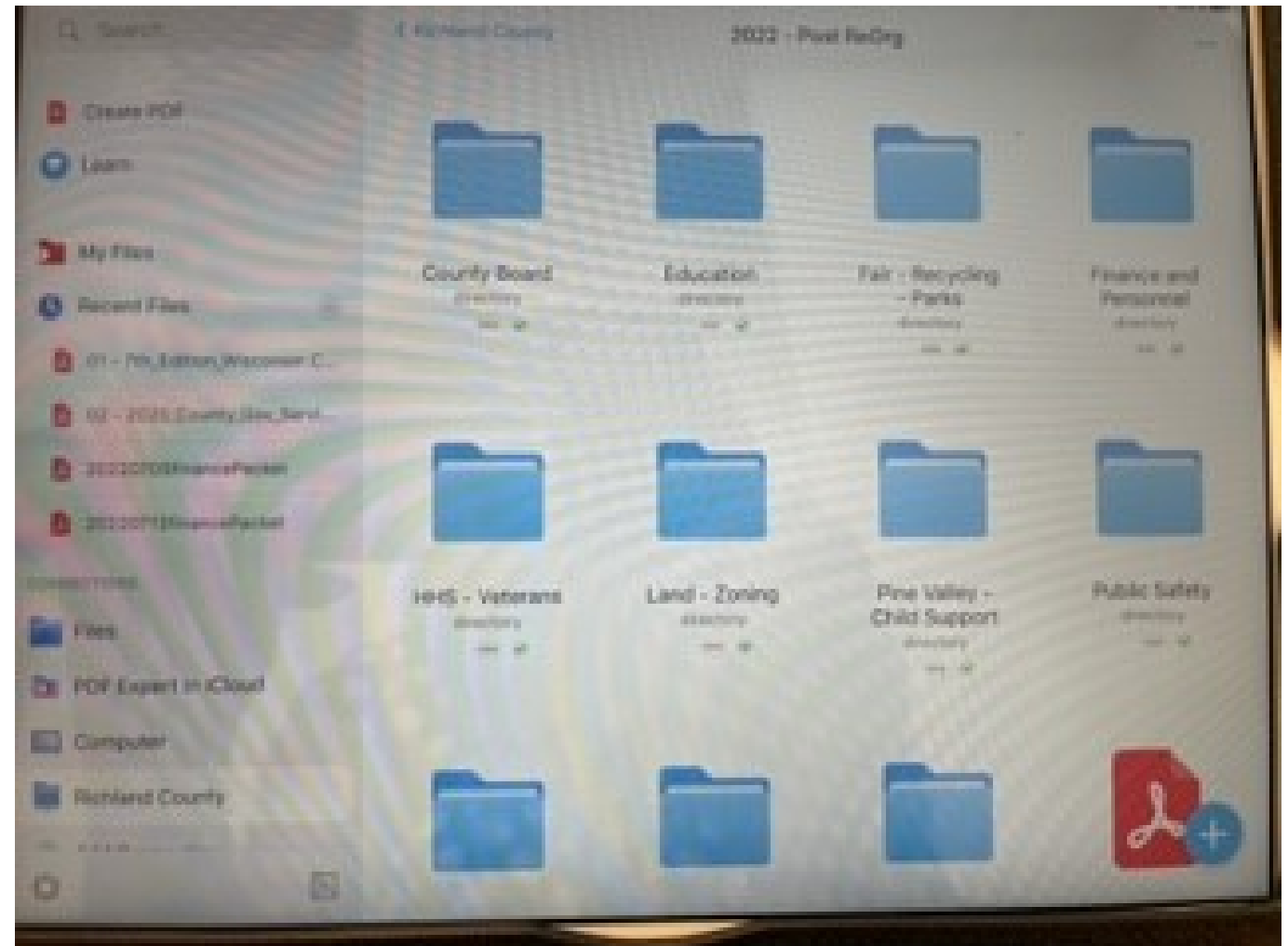
---



## Where to find information



On your iPad, you can find HHS - Veterans Board Meeting materials.



co.Richland.wi.us/departments/hhs

# Richland County HEALTH & HUMAN SERVICES

[Programs](#) [Agency Info](#) [Employment](#) [Other Links](#) [County Departments](#)

June 22, 2020

[Aging & Disability Resource Center](#)

[Birth to Three](#)

[Child & Youth Services](#)

[Behavioral Health Services](#)

[Economic Support](#)

[Public Health](#)

[Immunizations Clinic Dates](#)

[Meal Site Menus](#)

[Staff Directory](#)

## Health & Human Services

221 W. Seminary Street  
Richland Center, WI 53581  
Phone: 608-647-8821  
Fax: 608-647-6611

## Aging, Disability, & Resource Center

Phone: 608-647-4616  
Fax: 608-647-6611

## For Emergency Services:

Concerns involving suicide, mental health, addiction, and other crisis situations to speak with a crisis professional.  
**888-552-6642**

Contact the Richland County Sheriff's Department for concerns involving child abuse or neglect to request the Child & Youth Services On-Call Worker.  
**608-647-2106**

 Find us on Facebook

## Welcome to Health & Human Services

*Promoting the Health, Well-Being, & Self-Sufficiency for All People of Richland County*



Richland County Health & Human Services is dedicated to helping those in our county to access public resources, which will help them prosper and have more independent, fulfilling lives. It is our mission to provide these resources in a way that promotes the health, well-being, & self-sufficiency for all people of Richland County.

The Richland County Department of Health and Human Services provides a comprehensive array of services and programs consumers in Richland County each year. These services are provided through the following programs:

[Aging, Disability, & Resource Center](#)

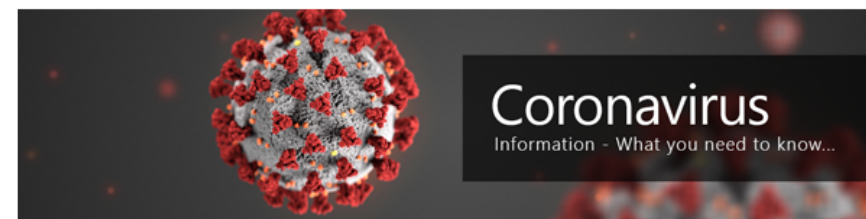
[Child & Youth Services](#)

[Economic Support](#)

[Birth to Three](#)

[Behavioral Health Services](#)

[Public Health](#)





Facebook.com/rchhs



## Richland County Health & Human Services

2K followers • 207 following

Posts

About

Photos

Videos

...

### Intro

Richland County Health and Human Services provides a comprehensive array of services including aging

**i** Page · Government organization

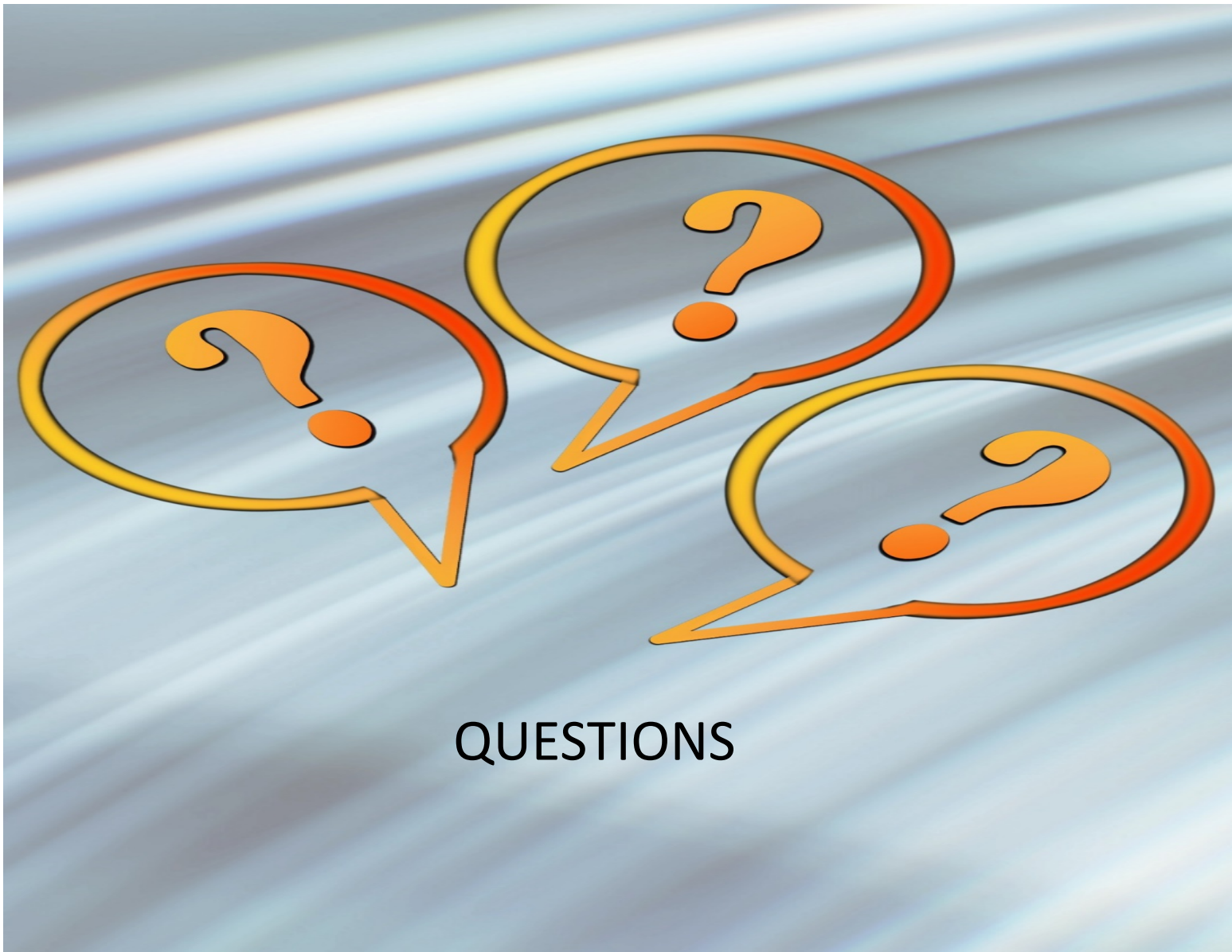
**📍** 221 W Seminary Street, Richland Center, WI, United States · Wisconsin



### Richland County Health & Human Services

4 hrs · 🌐

Richland County is offering free COVID-19 testing today 7/18/2022 in the Central Parking Lot of UW Platteville-Richland from 10am-11am. The Richland County Emergency Management and Health & Human Services Departments will be hosting FREE COVID-19 drive-thru testing today in the Central Parking Lot of the UW Platteville-Richland Campus located at 1200 US-Highway 14, Richland Center, WI. Hours of operation are from 10:00 am to 11:00 am. Those wishing to be tested should follow ... [See more](#)



QUESTIONS



# Placements

Understanding placement types, costs, and mandates

# Important Principles

## CONFIDENTIALITY

- ▶ Information about each placement must be limited because of the need to protect client privacy. We can't answer any client specific questions.

## AUTHORITY TO MAKE PLACEMENTS

- ▶ The majority of placements occur with court order or under court oversight
- ▶ Some placements may also occur voluntarily in order to manage safety

## LEAST RESTRICTIVE REQUIREMENT

- ▶ All placements are required to be provided in the least restrictive setting necessary to meet the person's safety, treatment, and/or care needs
- ▶ Health and Human Services is responsible to manage each placement to assure the appropriate setting or level of care is provided

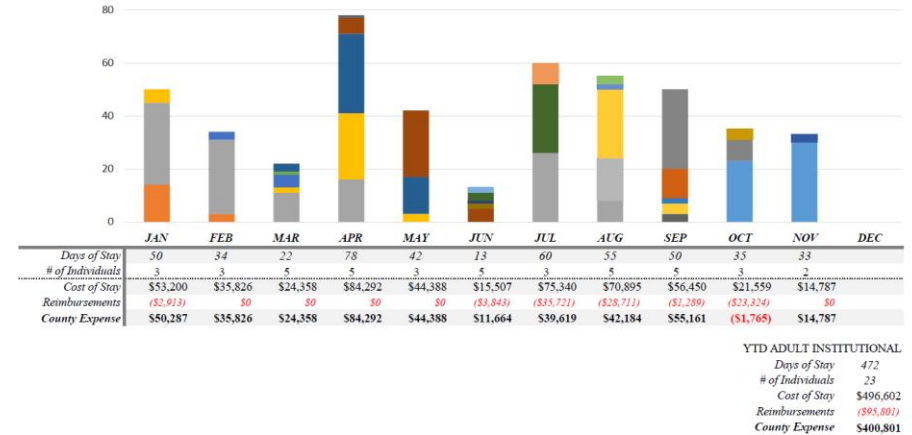
# Reading the Placement Report

- ▶ Adult Placements (Fund 54) are shown on one side of the page & Child Placements (Fund 44) on the other side
- ▶ Placements on each page are divided into 2 categories: “institutional-type” and “community-type”
- ▶ Types of placement facilities and the cost range are shown in each section
- ▶ The chart shows a different color for each person who was in placement. The same color in that chart represents the person continuing or returning to the placement.
- ▶ The table below each chart shows:
  - ▶ Total days of stay for each month
  - ▶ Total number of individuals in placement for each month
  - ▶ Monthly cost of all placements
  - ▶ Any Reimbursements that were received or credited
  - ▶ County’s Expense for the placement

## RICHLAND COUNTY ADULT PLACEMENTS Fund 54

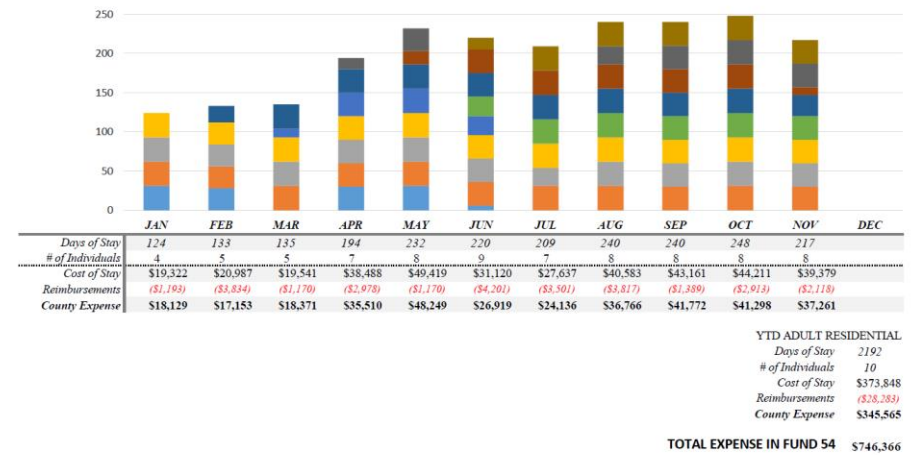
### ADULT INSTITUTIONAL AND INPATIENT PLACEMENTS

Includes Mental Health Institutes, Trempealeau County Health Care, and private inpatient hospitals  
Cost Range: \$1,039 to \$1,325 per day



### ADULT COMMUNITY RESIDENTIAL PLACEMENTS

Includes Community-Based Residential Facilities and Adult Family Homes  
Cost Range: \$81 to \$502 per day





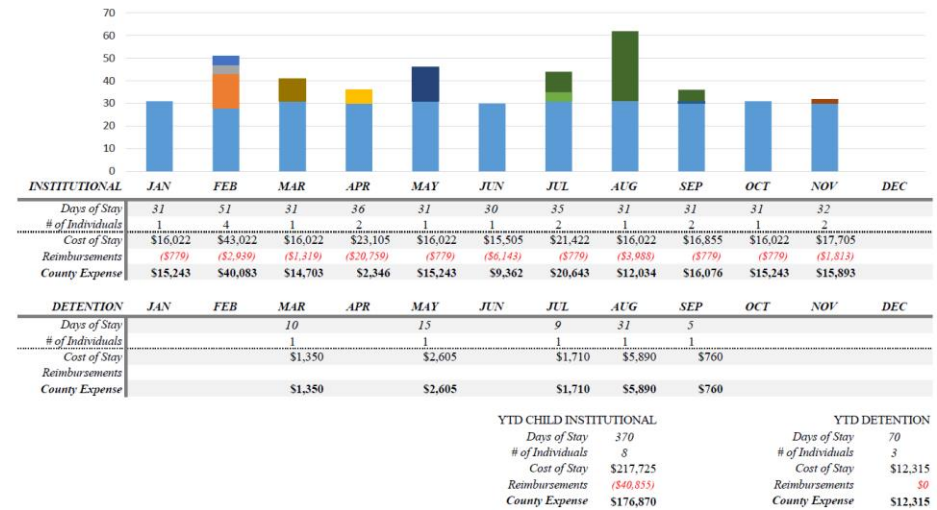
# Reading the Placement Report

- ▶ On the Fund 44 page Child institutional and inpatient are grouped with secure and non-secure detention in the chart, but are broken out on the tables.
- ▶ Group home, treatment foster care and regular foster care are grouped in the chart, but separated out on the tables
- ▶ Each of the tables are totaled beneath them
- ▶ There is a total expense shown for each of the placement funds at the very bottom of the page

## RICHLAND COUNTY CHILD PLACEMENTS Fund 44

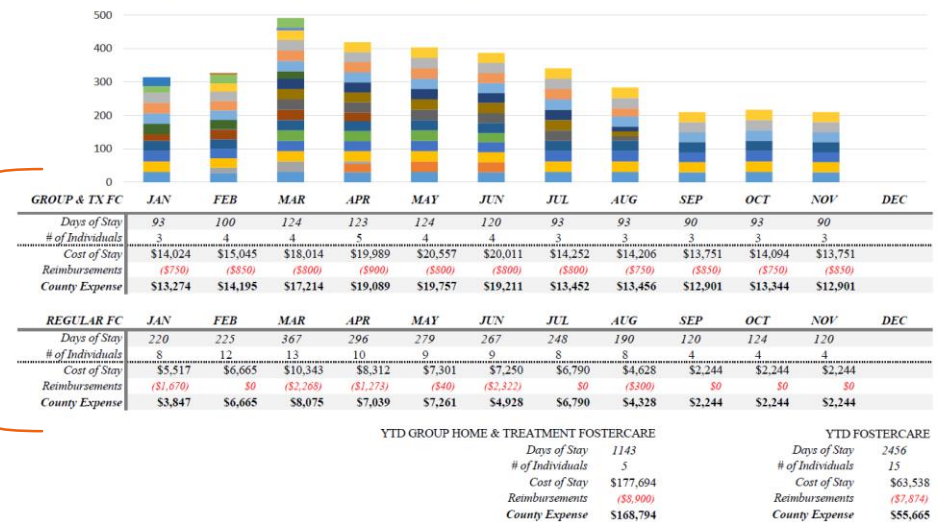
### CHILD INSTITUTIONAL, INPATIENT, AND DETENTION PLACEMENTS

Includes mental health institutes, private inpatient hospitals, children's residential care centers, as well as secure and non-secure detention facilities  
Cost Range: Institutional \$517 to \$1,350 per day; Detention \$135 to \$190 per day



### CHILD FOSTERCARE AND TREATMENT FOSTERCARE PLACEMENTS

Includes regularly licensed fostercare homes, licensed treatment fostercare homes, and youth group homes  
Cost Range: Group & Tx FC \$125 to \$200 per day; Regular FC \$25 to \$75 per day



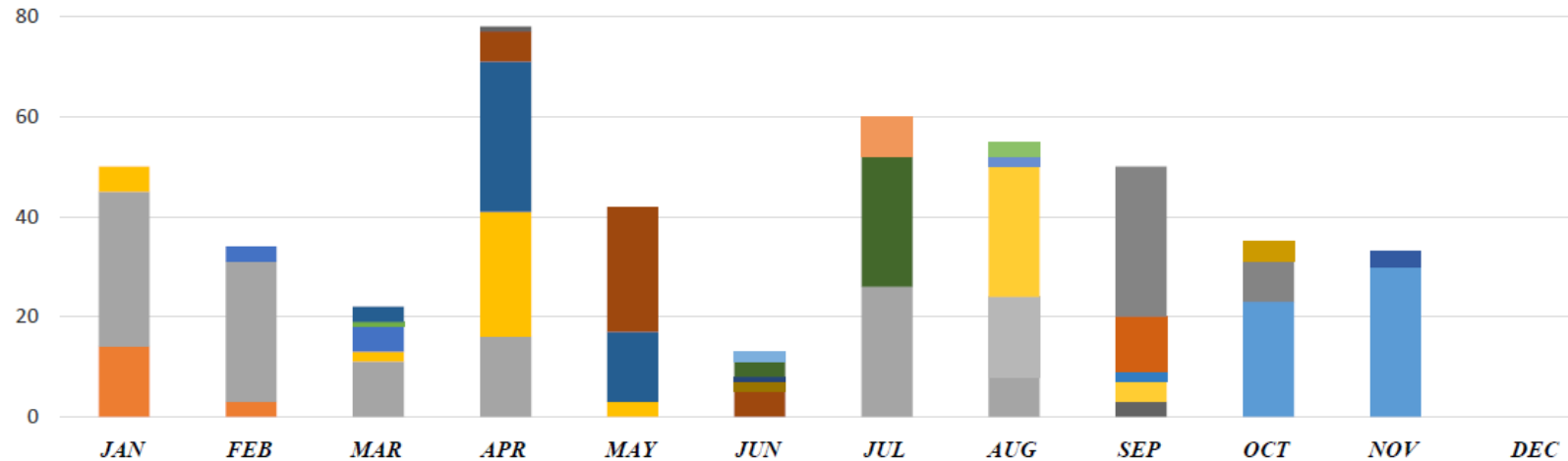
**TOTAL EXPENSE IN FUND 44** \$401,328

# Fund 54 Adult “institutional-type” Placements

## ADULT INSTITUTIONAL AND INPATIENT PLACEMENTS

*Includes Mental Health Institutes, Trempealeau County Health Care, and private inpatient hospitals*

*Cost Range: \$365 to \$1,325 per day*



	JAN	FEB	MAR	APR	MAY	JUN	JUL	AUG	SEP	OCT	NOV	DEC
Days of Stay	50	34	22	78	42	13	60	55	50	35	33	
# of Individuals	3	3	5	5	3	5	3	5	5	3	2	
Cost of Stay	\$53,200	\$35,826	\$24,358	\$84,292	\$44,388	\$15,507	\$75,340	\$70,895	\$56,450	\$21,559	\$14,787	
Reimbursements	(\$2,913)	\$0	\$0	\$0	\$0	(\$3,843)	(\$35,721)	(\$86,815)	(\$1,289)	(\$23,324)	\$0	
County Expense	\$50,287	\$35,826	\$24,358	\$84,292	\$44,388	\$11,664	\$39,619	(\$15,920)	\$55,161	(\$1,765)	\$14,787	

### YTD ADULT INSTITUTIONAL

Days of Stay	472
# of Individuals	23
Cost of Stay	\$496,602
Reimbursements	(\$153,905)
County Expense	\$342,697

# Fund 54 Adult “*institutional-type*” Placements

- ▶ Mental Health Institutes (*e.g. Winnebago and Mendota*)
  - ▶ *Cost Range: \$1,039 to \$1,325 per day*
  - ▶ *Reasons for Placement: Emergency detentions and long-term mental health treatment needs*
  - ▶ *Reimbursement Sources: Medicare, Private Insurance, Private Pay*
- ▶ Other Institutes for Mental Disease - IMDs (*e.g. Trempealeau County Health Care Center*)
  - ▶ *Cost Range: \$365 per day*
  - ▶ *Reasons for Placement: Long-term mental health treatment needs*
  - ▶ *Reimbursement Sources: Private Pay*
- ▶ Private Inpatient Hospitals (*e.g. Gundersen, Sacred Heart, Southwest Health Care*)
  - ▶ *Cost Range: \$900 to \$1,500 per day*
  - ▶ *Reasons for Placement: Emergency detention and acute inpatient treatment*
  - ▶ *Reimbursement Sources: Medicaid, Medicare, Private Insurance, Private Pay*

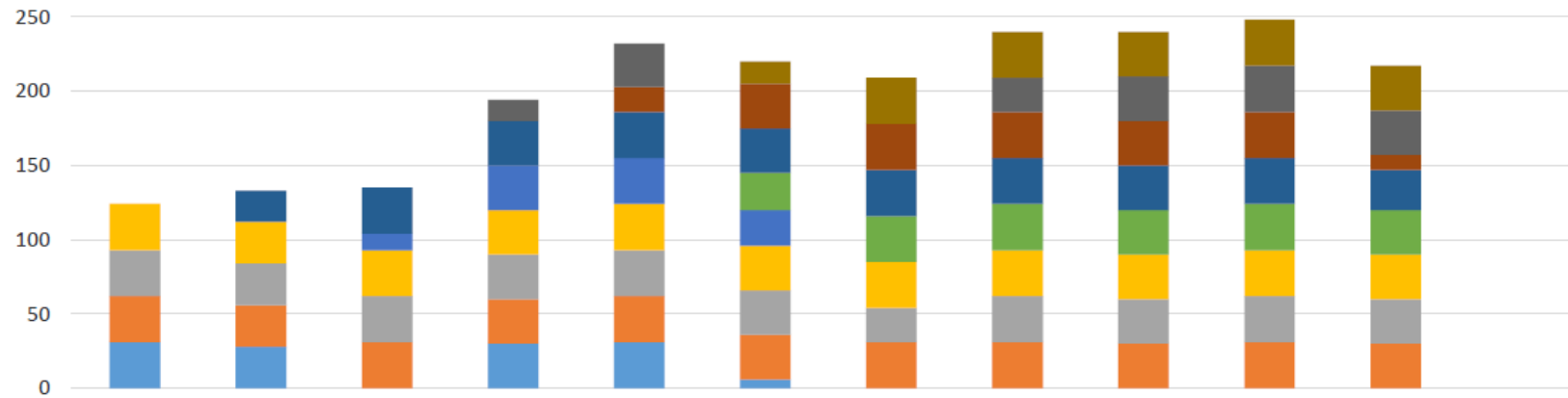


# Fund 54 Adult “community-type” Placements

## ADULT COMMUNITY RESIDENTIAL PLACEMENTS

*Includes Community-Based Residential Facilities and Adult Family Homes*

*Cost Range: \$81 to \$502 per day*



	JAN	FEB	MAR	APR	MAY	JUN	JUL	AUG	SEP	OCT	NOV	DEC
Days of Stay	124	133	135	194	232	220	209	240	240	248	217	
# of Individuals	4	5	5	7	8	9	7	8	8	8	8	
Cost of Stay	\$25,963	\$42,547	\$22,268	\$41,215	\$52,146	\$33,847	\$30,364	\$43,310	\$45,888	\$46,938	\$42,106	
Reimbursements	(\$1,193)	(\$4,749)	(\$1,170)	(\$2,978)	(\$1,170)	(\$4,201)	(\$3,501)	(\$3,817)	(\$1,389)	(\$2,913)	(\$2,118)	
County Expense	\$24,771	\$37,798	\$21,098	\$38,237	\$50,976	\$29,647	\$26,863	\$39,493	\$44,499	\$44,025	\$39,989	

YTD ADULT RESIDENTIAL  
 Days of Stay 2192  
 # of Individuals 10  
 Cost of Stay \$426,595  
 Reimbursements (\$29,197)  
 County Expense \$397,398

# Fund 54 Adult “community-type” Placements

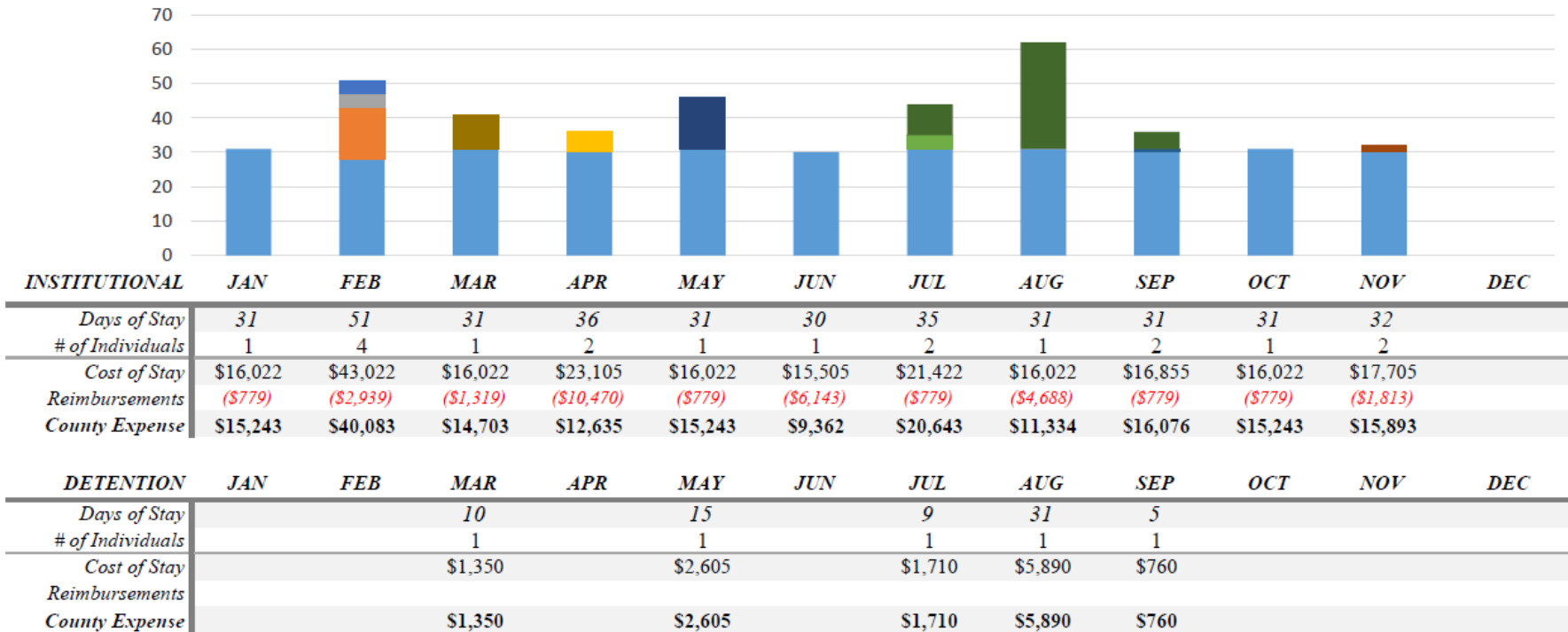
- ▶ **Community-Based Residential Facilities - CBRFs** (*e.g. Harmony Place Assisted Living, Cornerstone Foundation*)
  - ▶ *Cost Range: \$125 to \$502 per day*
  - ▶ *Reasons for Placement: Step-down before moving to the community; period of skill training to develop independence; long-term community support*
  - ▶ *Reimbursement Sources: Medicaid via CRS, CCS or Family Care and private pay*
- ▶ **Adult Family Homes - AFHs** (*e.g. Harmony Acres, Evergreen*)
  - ▶ *Cost Range: \$81 to \$150 per day*
  - ▶ *Reasons for Placement: Step-down before moving to the community; period of skill training to develop independence; long-term community support*
  - ▶ *Reasons for Placement: Step-down before moving to the community; period of skill training to develop independence; long-term community support*
  - ▶ *Reimbursement Sources: Medicaid via CRS, CCS or Family Care and private pay*

# Fund 44 Child “institutional-type” Placements

## CHILD INSTITUTIONAL, INPATIENT, AND DETENTION PLACEMENTS

Includes mental health institutes, private inpatient hospitals, children’s residential care centers, as well as secure and non-secure detention facilities

Cost Range: Institutional \$267 to \$1,350 per day; Detention \$130 to \$190 per day



### YTD CHILD INSTITUTIONAL

Days of Stay 370  
 # of Individuals 8  
 Cost of Stay \$217,725  
 Reimbursements (\$31,266)  
 County Expense \$186,459

### YTD DETENTION

Days of Stay 70  
 # of Individuals 3  
 Cost of Stay \$12,315  
 Reimbursements \$0  
 County Expense \$12,315

# Fund 44 Child “*institutional-type*” Placements

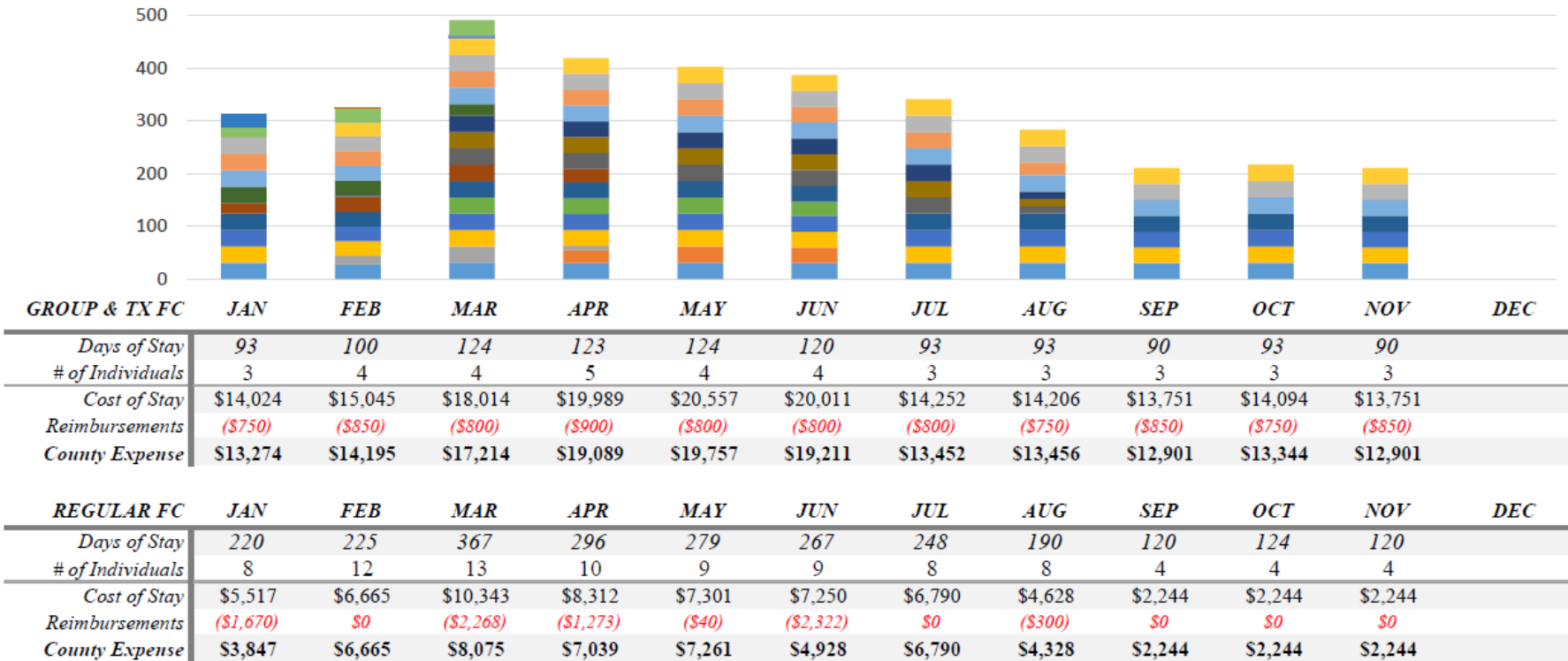
- ▶ Mental Health Institutes (e.g. Winnebago)
  - ▶ Cost Range: \$1,100 to \$1,325 per day
  - ▶ Reasons for Placement: Emergency detentions and long-term mental health treatment needs
  - ▶ Reimbursement Sources: Medicaid, Private Insurance, Private Pay
- ▶ Children’s Residential Care Centers - RCCs (e.g. Chileda, Northwest Passage)
  - ▶ Cost Range: \$267 TO \$517 per day
  - ▶ Reasons for Placement: Long-term treatment/care needs (often necessary to assure safety for individual or community)
  - ▶ Reimbursement Sources: Private Pay (including child support & social security from the child)
- ▶ Secure and Non-Secure Detention (e.g. La Crosse County Detention)
  - ▶ Cost Range: \$130 to \$190 per day
  - ▶ Reasons for Placement: Specific criminal charges and the safety of the community cannot be insured.
  - ▶ Reimbursement Sources: Private if possible/reimbursement from the parent and/or guardian

# Fund 44 Child “community-type” Placements

## CHILD FOSTERCARE AND TREATMENT FOSTERCARE PLACEMENTS

Includes regularly licensed fostercare homes, licensed treatment fostercare homes, and youth group homes

Cost Range: Group Hm \$170 to \$253; Tx FC \$74 to \$140 per day; Regular FC \$13 to \$67 per day



### YTD GROUP HOME & TREATMENT FOSTERCARE

Days of Stay 1143  
 # of Individuals 5  
 Cost of Stay \$177,694  
 Reimbursements (\$8,900)  
 County Expense \$168,794

### YTD REGULAR FOSTERCARE

Days of Stay 2456  
 # of Individuals 15  
 Cost of Stay \$63,538  
 Reimbursements (\$7,874)  
 County Expense \$55,665

# Fund 44 Child “community-type” Placements

- ▶ Youth Group Homes (*e.g. Family and Children’s Center Youth Home*)
  - ▶ Cost Range: \$170 to \$253
  - ▶ Reasons for Placement: *Child’s needs exceed that of a foster home and/or requires 24/7 care and supervision.*
  - ▶ Reimbursement Sources: *Private Pay/Child Support/Social Security/Disability from the child*
- ▶ Treatment Foster Care (*e.g. Family Works, Children’s Hospital of WI*)
  - ▶ Cost Range: \$74 TO \$140 per day
  - ▶ Reasons for Placement: *Child’s needs exceed that of a relative provider or foster care. Children may have some milder mental health or physical health needs in these settings compared to children placed in group homes or residential care.*
  - ▶ Reimbursement Sources: *Private Pay/Child Support/ Social Security from the child*
- ▶ Regular Foster Care
  - ▶ Cost Range: \$13 to \$67 per day
  - ▶ Reasons for Placement: *Child is a victim of abuse, neglect or abandonment or are unable to be kept safely in a family setting.*
  - ▶ Reimbursement Sources: *Private Pay/Child Support/ Social Security from the child*

# Means for Preventing or Reducing Length of Stay or County Cost

## ▶ Diversion

- ▶ Effective Crisis/Safety Intervention, Engagement, and Linkage to Community Services to divert from need for placement

## ▶ Stabilization & Reintegration

- ▶ Short-term placement to stabilize condition or situation so that safe return to community with linked services is appropriate

## ▶ Establish permanency for children who are in placements

- ▶ Pursue adoption or guardianship (requires termination of parental rights)

## ▶ Enrolling individuals into services that can fund placements

- ▶ Medicaid (*via CRS, CCS, or Family Care*) can fund certain placements for adults

# Challenges to be Addressed

- ▶ **Staff Turnover** interferes with development of staff expertise in diverting need for placement, providing effective intervention, enrolling individuals in programs, and pursuing permanency options
- ▶ **Limited Management Support** to pursue funding opportunities and provide program and organizational support to assure staff training and supervision and capturing all available funding sources
- ▶ **Limited Attorney and Social Work Time** to conduct legal work for terminating parental rights (TPRs) in order to pursue permanency for children
- ▶ **Waiting Lists** for community and outpatient services makes it difficult to provide timely linkage of follow-up services and enroll individuals in services that can fund placement services

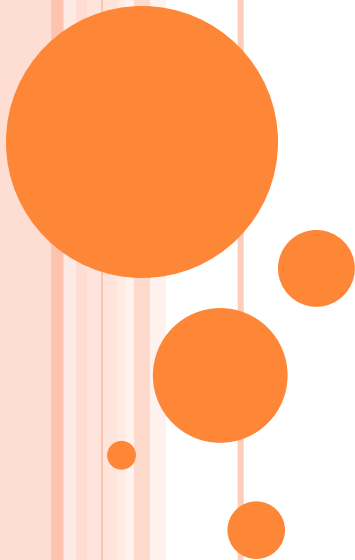


# **ADMINISTRATIVE SERVICES**

**ADMINISTRATION & BUILDING OPERATIONS UNIT**

**BUSINESS & FINANCIAL SERVICES UNIT**

*July 19, 2022*



# **ADMINISTRATIVE SERVICES UNIT**

## **MISSION STATEMENT**

The Administrative Services Unit of Richland County Health & Human Services continually strives to enhance the provision of accurate and considerate support in a confidential and timely manner to agency staff and clients.



# ADMINISTRATIVE SERVICES UNIT

## AREAS OF RESPONSIBILITY

- Accounts Payable
- Accounts Receivable
- Annual Budget Prep
- Boards/Committees
- Civil Rights
- Claims Processing
- Cleaning/Maintenance
- Client Record Keeping
- Clients Rights & Complaints
- Community Aids Reporting System
- Contracts Management
- Emergency Management
- Fiscal Reporting
- Grant & Program Claiming
- Human Resources
- Income Maintenance
- Office Management
- Outpatient MH Clinic Billing
- Payroll
- PPS
- PH Immunization Clinics
- Public Information
- Reception and Information
- Representative Payee
- Social Media- HHS Facebook
- Spanish Interpretation
- Transcription

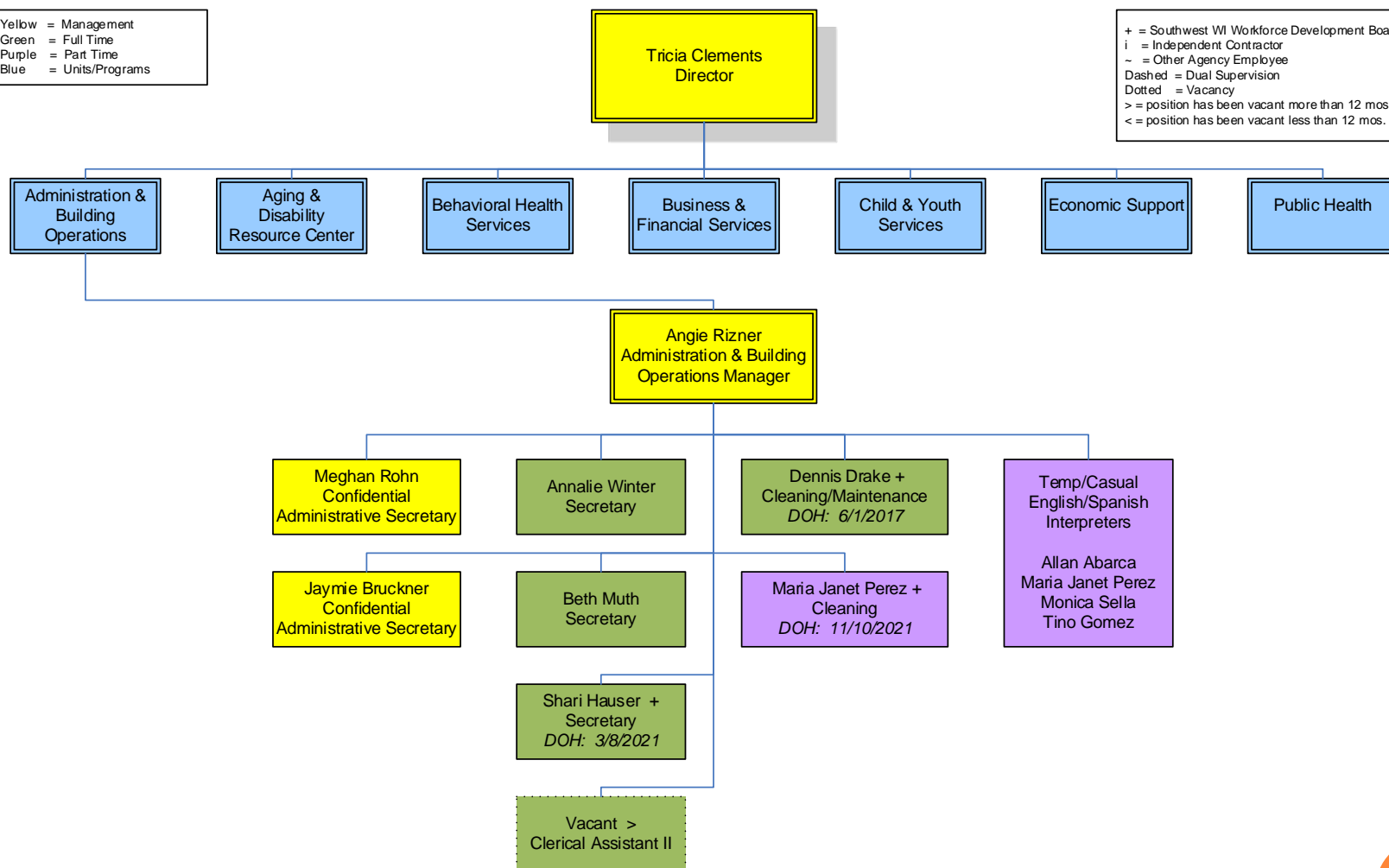


# RICHLAND COUNTY HEALTH & HUMAN SERVICES

## ADMINISTRATION & BUILDING OPERATIONS ORGANIZATIONAL STRUCTURE

Yellow = Management  
Green = Full Time  
Purple = Part Time  
Blue = Units/Programs

+ = Southwest WI Workforce Development Board  
i = Independent Contractor  
~ = Other Agency Employee  
Dashed = Dual Supervision  
Dotted = Vacancy  
> = position has been vacant more than 12 mos.  
< = position has been vacant less than 12 mos.



# ADMINISTRATION & BUILDING OPERATIONS

## UNIT HIGHLIGHTS 2020 – 2022

- ❖ Answered on average 8,000 calls/year, assisted more than 5,000 walk-ins, and assisted with administering over 900 COVID-19 vaccines (9/1/2021-ongoing).
- ❖ Created and monitored over 100 contracts totaling \$6M.
- ❖ Recruited, interviewed and filled 49 vacant positions.
- ❖ Processed payroll for 84 county staff.
- ❖ Supported and took minutes for 113 meetings.
- ❖ Processed 205 releases of information for clients.
- ❖ Scanned 24,016 documents into our electronic systems.
- ❖ Public Health Pandemic Emergency Response:
  - ❖ Supported COVID-19 Testing Sites.
  - ❖ Supported COVID-19 Vaccine Clinics.
  - ❖ Public Information Officer prepared nearly 350 Press Releases.

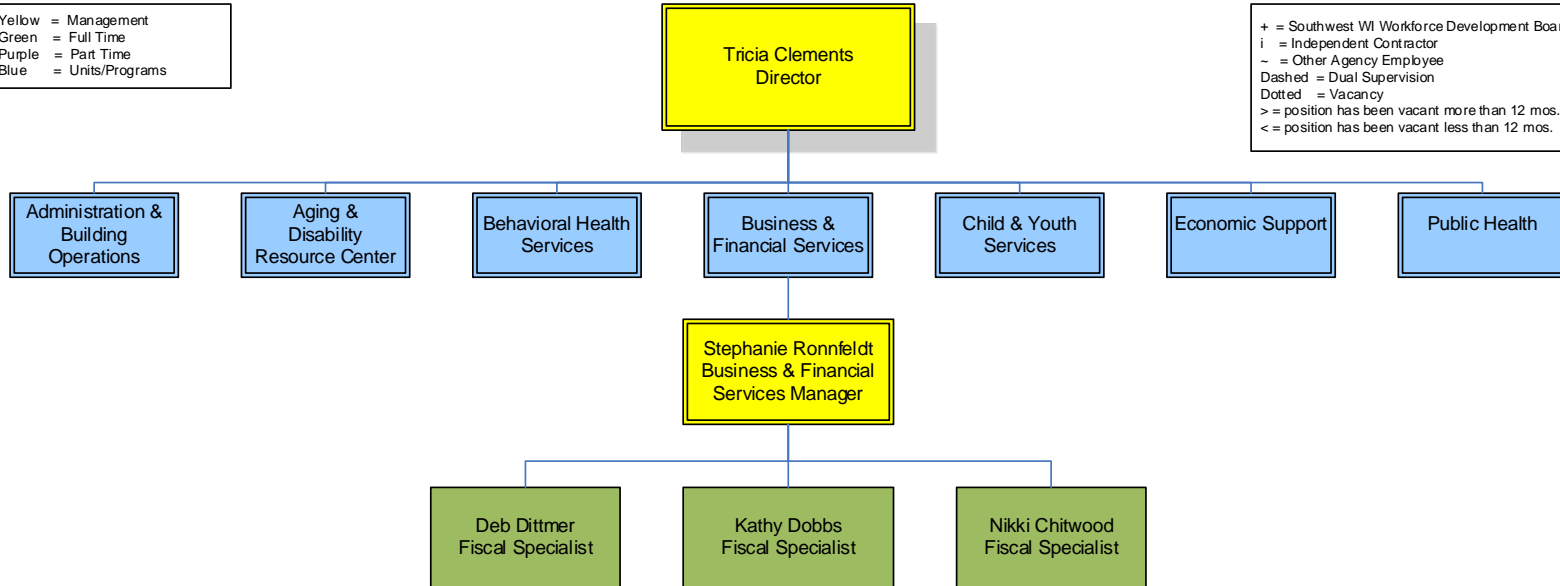


# RICHLAND COUNTY HEALTH & HUMAN SERVICES

## BUSINESS & FINANCIAL SERVICES ORGANIZATIONAL STRUCTURE

Yellow = Management  
Green = Full Time  
Purple = Part Time  
Blue = Units/Programs

+ = Southwest WI Workforce Development Board  
i = Independent Contractor  
~ = Other Agency Employee  
Dashed = Dual Supervision  
Dotted = Vacancy  
> = position has been vacant more than 12 mos.  
< = position has been vacant less than 12 mos.



# **BUSINESS & FINANCIAL SERVICES UNIT HIGHLIGHTS 2020 – 2022**

- ❖ Submitted 279,953 CCS claims and collected \$5.3M.
- ❖ Submitted 9420 MH/AODA/Crisis/PH claims and collected over \$430,000.
- ❖ Processed nearly 4,500 checks to pay vendors.
- ❖ Collected over \$35,000 from 284 delinquent accounts.
- ❖ Processed \$7.1 in claims from the various federal and state programmatic allocations.
- ❖ Created and monitored a \$9.8 budget.



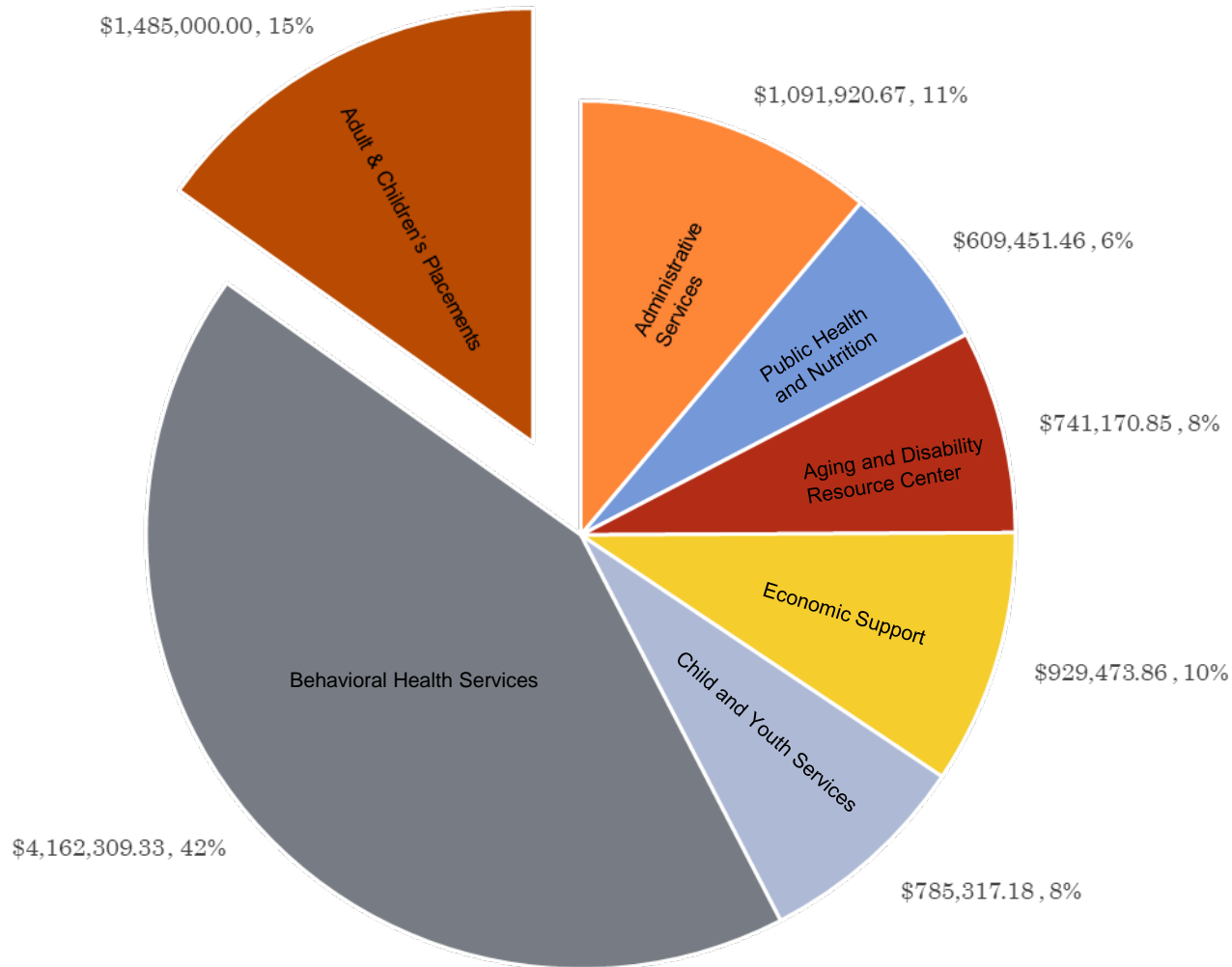
# HEALTH AND HUMAN SERVICES

## 2022 BUDGET

	2022 BUDGET	2022 Non-Levy REVENUE	2022 TAX LEVY
<b>Administration</b>	<b>1,091,921</b>	<b>844,627</b>	<b>274,363</b>
Administration Personnel	709,006		
Building & Operating Costs	382,915		
<b>Public Health &amp; Nutrition</b>	<b>609,451</b>	<b>341,228</b>	<b>237,126</b>
Public Health	358,678	125,773	201,807
Nutrition	250,773	215,455	35,319
<b>Aging &amp; Disability Resource Center</b>	<b>741,171</b>	<b>706,557</b>	<b>31,607</b>
Elderly Services	343,000	303,890	31,607
Resource Center	398,171	402,667	-
<b>Economic Support Unit</b>	<b>929,474</b>	<b>776,702</b>	<b>153,272</b>
ESS Program	929,474	776,702	153,272
<b>Child &amp; Youth Services</b>	<b>785,317</b>	<b>785,317</b>	
Children & Youth Programs	785,317	785,317	-
<b>Behavioral Health</b>	<b>4,162,309</b>	<b>3,976,235</b>	<b>192,610</b>
MH Outpatient/Crisis Services	756,575	734,672	21,903
AODA Outpatient	160,092	160,092	
CCS/CST	2,676,178	2,676,178	10,377
Adult Protective Services	127,226	57,723	69,503
Treatment Court	158,772	131,669	27,103
Birth to Three Program	164,018	134,641	29,377
Children with Disabilities	115,607	81,260	34,347
<b>Adult &amp; Children's Placements</b>	<b>1,485,000</b>	<b>-</b>	<b>1,485,000</b>
<b>TOTAL</b>	<b>9,804,643</b>	<b>7,430,666</b>	<b>2,373,977</b>

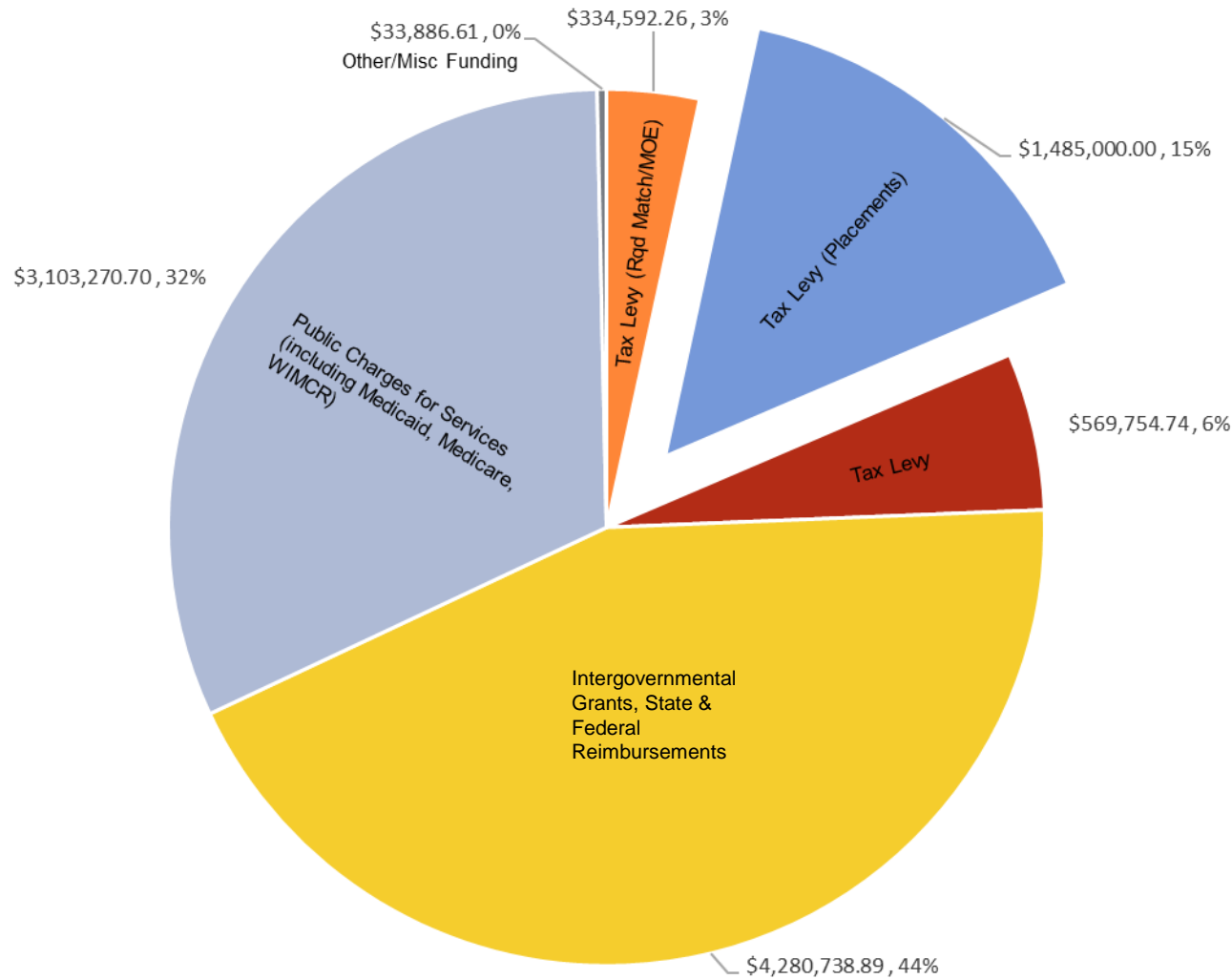


# HEALTH AND HUMAN SERVICES 2022 EXPENSE BUDGET



TOTAL EXPENSE BUDGET: \$9,804,643

# HEALTH AND HUMAN SERVICES 2022 REVENUE BUDGET



TOTAL REVENUE BUDGET: \$9,804,643

# ADMINISTRATIVE SERVICES UNIT

## FUTURE QUESTIONS/CONCERNS

- Continue to maximize revenues & improve billing/invoicing practices.
- Expand upon recruitment & retention efforts.
- Further implementation of our EHR system to expand upon a paperless environment.
- Ensure Admin processes are sustainable with the continued growth of CCS.
- Building Issues (26,384 sq. ft. & 84 offices):
  - 18 aging HVAC systems.
  - 377 outdated light fixtures and 951 fluorescent bulbs. Possible transition to LED fixtures & bulbs.
  - Possible remodeling/utilization of computer lab area.
  - Possible shed construction for ADRC Transportation vehicles.



# QUESTIONS?

Angie Ríznér

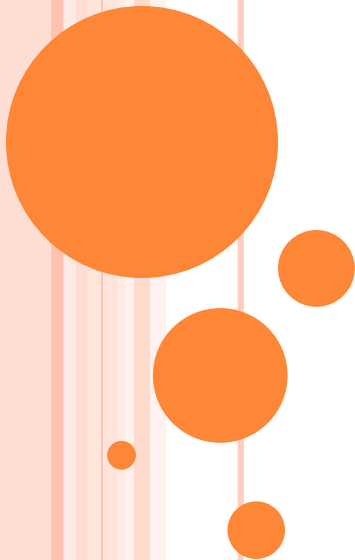
Administration & Building Operations Manager

(608) 649-5921

Stephanie Ronnfeldt

Business & Financial Services Manager

(608) 649-5751

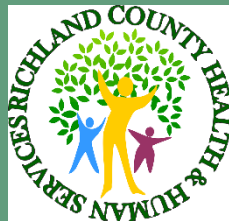


# Economic Support Unit

**Richland County Health and Human Services**

**Board Member Orientation**

**July 19, 2022**



# MISSION STATEMENT

The Richland County Health and Human Services Economic Support Unit believes that all persons applying for assistance have the right to be treated with respect, dignity and confidentiality.

Our Mission is to provide families, and individuals who are elderly, blind or disabled with services needed to achieve economic independence, including referrals to the appropriate agencies.

# MEET THE TEAM COMMITTED TO THE MISSION

**Briana Turk – Economic Support Unit Manager**

**Darin Steinmetz – Lead Economic Support Specialist**

**Economic Support Specialists:**

**Barb Ottesen –specializing in Wisconsin Shares/Child Care (CC)**

**Lori Brinkley –specializing in Elderly, Blind and Disabled (EBD)**

**Toni Cabrera –specializing in WHEAP/Energy Assistance**

**Amanda Oman**

**Amber Morris**

**Becky Dalberg**

**Billy Cordero**

**Connie Ostrowski**

**Crystal Adams**

**Darien Ostrowski**

**Kelly Mormann**

**Mark Tracy**

**Savanah Tydrich**

**Richland County ES Unit has  
a combined total of over  
105 years of experience!**

We are all members of the Capital Consortium team.

Adams, Columbia, Dane, Dodge, Juneau, Richland, Sauk, and Sheboygan



# WHAT DOES AN ECONOMIC SUPPORT SPECIALIST DO?

- [HTTPS://WCHSA.ORG/WCHSA-COMMITTEES/ECONOMIC-SUPPORT/ECONOMIC-SUPPORT-STAFF-RECRUITMENT/](https://wchsa.org/wchsa-committees/economic-support/economic-support-staff-recruitment/)



# ECONOMIC SUPPORT PROGRAMS IN 2021

FoodShare

## CAPITAL CONSORTIUM

ADAMS, COLUMBIA, DANE, DODGE, JUNEAU, RICHLAND, SAUK, AND SHEBOYGAN

# FOODSHARE

- Created to stop hunger by The Food Stamp Act of 1964 initiated by Lyndon B Johnson
- FoodShare was created to help stop hunger and improve nutrition & health.
  - Anyone can apply
  - Clients must meet the financial and non-financial eligibility
- SNAP: Supplemental Nutrition Assistance Program



# ECONOMIC SUPPORT PROGRAMS IN 2021

FoodShare

WI Shares/Childcare  
Assistance

## CAPITAL CONSORTIUM

ADAMS, COLUMBIA, DANE, DODGE, JUNEAU, RICHLAND, SAUK, AND SHEBOYGAN

# CHILDCARE

- WORKING TOGETHER TO MAKE CHILDCARE COSTS AFFORDABLE

- AVAILABLE FOR WORKING FAMILIES
- AVAILABLE, IN SOME SITUATIONS, FOR PARENTS ATTENDING TECHNICAL COLLEGE



- WE ARE ALSO RESPONSIBLE FOR CERTIFYING CHILDCARE FACILITIES.

# ECONOMIC SUPPORT PROGRAMS IN 2021

FoodShare

WI Shares/Childcare  
Assistance

Healthcare:  
Badgercare  
and  
Medical  
Assistance

## CAPITAL CONSORTIUM

ADAMS, COLUMBIA, DANE, DODGE, JUNEAU, RICHLAND, SAUK, AND SHEBOYGAN



# HEALTHCARE

## ● BADGERCARE PLUS & FAMILY PLANNING SERVICES

- IF ELIGIBLE, BADGERCARE PLUS PROVIDES HEALTHCARE COVERAGE FOR WISCONSIN FAMILIES AND SINGLE INDIVIDUALS WHO MAY OTHERWISE NOT HAVE ACCESS TO AFFORDABLE MEDICAL CARE.

- WHO'S POTENTIALLY ELIGIBLE?

- CHILDREN UNDER 19 YEARS OF AGE;
- PREGNANT WOMEN;
- PARENTS AND CARETAKERS OF CHILDREN UNDER 19
- ADULTS WITHOUT DEPENDENT CHILDREN



## ● MEDICAL ASSISTANCE

- INCLUDES THE ELDERLY, BLIND, AND DISABLED POPULATION. IF INCOME AND ASSET ELIGIBLE, PROVIDES ACCESS TO AFFORDABLE MEDICAL CARE.

- ADDITIONAL SUB-PROGRAMS

- INSTITUTIONAL LONG-TERM CARE
- FAMILY CARE/IRIS
- MEDICARE SAVINGS PROGRAMS

# ECONOMIC SUPPORT PROGRAMS IN 2021

FoodShare

WI Shares/Childcare  
Assistance

Healthcare:

Badgercare

Medical  
assistance

Caretaker  
Supplement

## CAPITAL CONSORTIUM

ADAMS, COLUMBIA, DANE, DODGE, JUNEAU, RICHLAND, SAUK, AND SHEBOYGAN

# CARETAKER SUPPLEMENT

- WISCONSIN'S CARETAKER SUPPLEMENT (CTS) IS A CASH BENEFIT AVAILABLE TO PARENTS WHO ARE ELIGIBLE FOR SSI PAYMENTS.
- IF ELIGIBLE A PARENT CAN RECEIVE A BENEFIT OF \$250 FOR THE 1<sup>ST</sup> CHILD AND \$150 FOR EACH ADDITIONAL CHILD.
- ANY PARENT RECEIVING SSI WILL NOT BE ABLE TO RECEIVE CTS FOR ANY CHILD ALSO RECEIVING SSI.



# ECONOMIC SUPPORT PROGRAMS IN 2021

FoodShare

WI Shares/Childcare  
Assistance

Healthcare:

Badgercare

Medical  
assistance

Energy Assistance

Caretaker  
Supplement

## ENERGY ASSISTANCE IS HANDLED LOCALLY

# WI HOME ENERGY ASSISTANCE PROGRAM (WHEAP)

- HEATING AND ENERGY ASSISTANCE

- REGULAR SEASON BENEFITS PROVIDE HEATING AND ELECTRIC BILL PAYMENT ASSISTANCE FOR ONGOING CHARGES
- CRISIS AND PRO-ACTIVE SERVICES ASSIST APPLICANTS TO PAY TOWARDS PAST COSTS FOR HEATING AND ENERGY BILLS
- CRISIS FUNDS CAN ALSO ASSIST IN EMERGENCY FURNACE REPAIR OR REPLACEMENT

- WEATHERIZATION

- HELPS HOMEOWNERS AND RENTERS REDUCE ENERGY USE
  - INSULATION, HEATING SYSTEM UPDATES, APPLIANCE UPGRADES



# ECONOMIC SUPPORT PROGRAMS IN 2021

## FoodShare

Benefits paid to Richland County residents totaled \$6,768,267.

## Childcare

\$45,322.93 was paid to providers on behalf of Richland County families.

## BadgerCare+ & Medical Assistance

As many as 4,238 Richland County residents were enrolled in Medicaid. In 2020, \$36,647,626 was paid on behalf of Richland County residents.

## Energy Assistance

763 Richland Co households received assistance with heat and/or electric expenses.

## Caretaker Supplement

16 children received benefits in 2018 and 17 children in 2021.

## CAPITAL CONSORTIUM

ADAMS, COLUMBIA, DANE, DODGE, JUNEAU, RICHLAND, SAUK, AND SHEBOYGAN

# HOW TO APPLY

THE FASTEST, EASIEST WAY TO APPLY IS BY  
VISITING THE WEBSITE [HTTP://ACCESS.WI.GOV](http://ACCESS.WI.GOV)



## OTHER OPTIONS:

- CALL 608-647-8821 TO HAVE AN APPLICATION MAILED
- STOP BY OUR UNIT LOCATED HERE IN THE RICHLAND COUNTY HEALTH AND HUMAN SERVICES BUILDING
- CALL THE CAPITAL CONSORTIUM AT 1-888-794-5556.

\*EXCEPT ENERGY ASSISTANCE – STOP BY TO COMPLETE AN APPLICATION OR CALL 608-647-8821 TO HAVE AN APPLICATION MAILED OR TO SET AN APPOINTMENT FOR A FACE-TO-FACE INTERVIEW.

ANY QUESTIONS?



# Behavioral Health Services

Board Orientation

# Behavioral Health Services

Outpatient Mental  
Health Treatment  
Services

Substance Abuse  
Treatment Services

Crisis Services

Comprehensive  
Community Services  
and Coordinated  
Services Teams

Intoxicated Driver  
Assessment Services

Treatment Court  
Program Services

Adult Protective  
Services

Birth to Three and  
Children's Long  
Term Support  
Services

### ***Outpatient Clinic***

Office-based individual, group, and family psychotherapy; substance abuse counseling; psychiatric evaluation and medication management; psychological evaluation and testing.

Assistance with a wide range of issues including: depression, anxiety, child emotional and behavioral issues, physical and sexual abuse, domestic violence, adjustment to stressful life situations, and coping with major mental illness.

## **OUTPATIENT CLINIC SERVICES**

- Mental Health Counseling / Psychotherapy
- Substance Abuse Counseling
- Psychological Evaluation
- Psychiatric Evaluation and Medication Management

### **Payment**

- *Medicaid, Medicare, private insurance and private pay cover cost of services*
- *Individuals with no insurance are eligible for a sliding fee based upon their income*



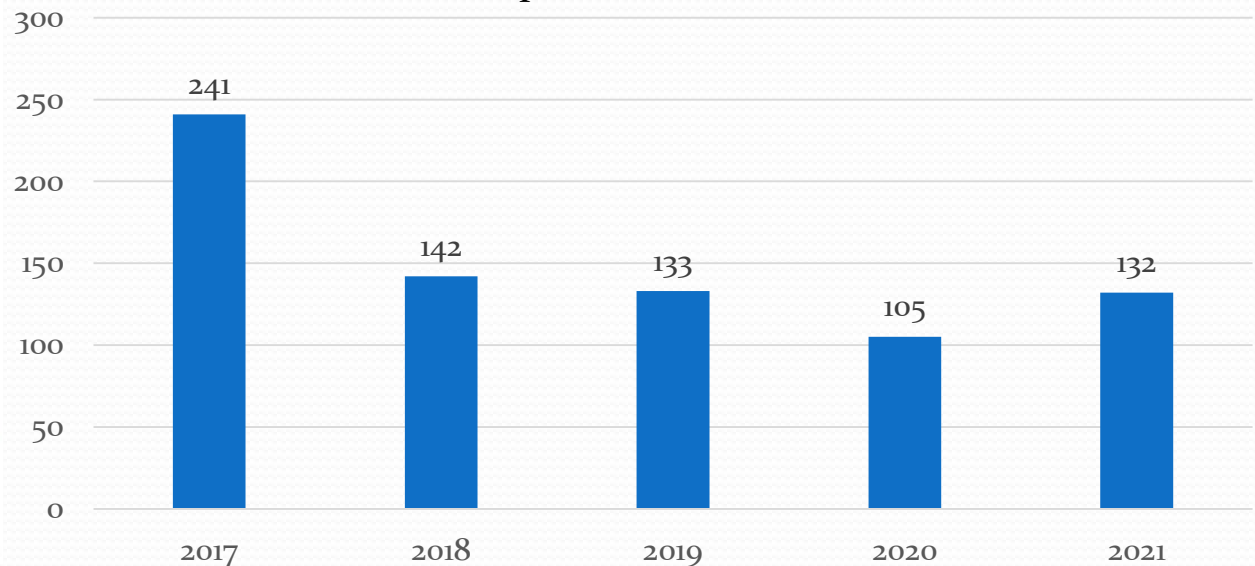
### ***Outpatient Clinic***

Office-based individual, group, and family psychotherapy; substance abuse counseling; psychiatric evaluation and medication management; psychological evaluation and testing.

Assistance with a wide range of issues including: depression, anxiety, child emotional and behavioral issues, physical and sexual abuse, domestic violence, adjustment to stressful life situations, and coping with major mental illness.

## **OUTPATIENT CLINIC SERVICES**

Number of Outpatient Mental Health Clients



### **Clinical Staff**

Alison Barger, LPC

Danielle Roelke, LPC-IT

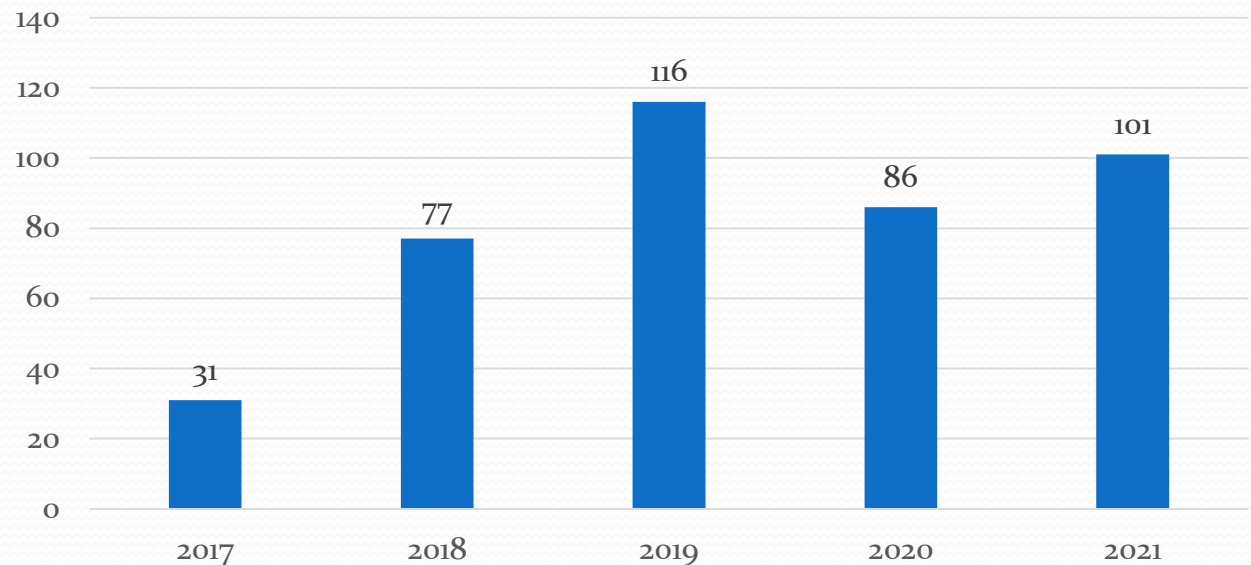
### ***Outpatient Clinic***

Office-based individual, group, and family psychotherapy; substance abuse counseling; psychiatric evaluation and medication management; psychological evaluation and testing.

Assistance with a wide range of issues including: depression, anxiety, child emotional and behavioral issues, physical and sexual abuse, domestic violence, adjustment to stressful life situations, and coping with major mental illness.

## **OUTPATIENT CLINIC SERVICES**

### **Substance Abuse Services**



### **Substance Abuse Counselors**

Kyla Luther, CSAC

Tiffany Olson, APSW, CSAC

# Sobriety Court Services

- Richland County Sobriety Court provides integrated supervision and evidenced based treatment to moderate or high risk clientele. This program services Richland County residents who have three or more OWI convictions and who suffer from alcohol dependence issues.
- This program is a multidisciplinary teaming model that provides wrap around treatment services.
- Sobriety Court Services are funded through a Treatment Alternatives and Diversion Grant from the Wisconsin Department of Justice, along with county tax levy.
  - Treatment Court Coordinator
  - Tiffany Olson, APSW, CSAC



# OUTPATIENT CLINIC PSYCHOLOGICAL EVALUATION SERVICES

Services provided include psychological testing to assist with determining diagnostic and treatment recommendations. Diagnostic services may be used for social security benefit assistance and referral to appropriate treatment options.

Licensed Psychologist  
Jean Warrior, Ph.D.

## OUTPATIENT CLINIC PSYCHIATRIC SERVICES

- Psychiatric evaluations and follow up medication management services are provided to those who would benefit from medication managed assistance with psychological and substance use treatment needs.
- Staff provide local care and treatment to allow individuals to live to their fullest capacity in the community
- Care is provided in the telehealth clinic at the Community Services Building

### Psychiatric Clinic Staff

Marianne Tateosian, D.O.

Sheri McGowan, RN

Kelly McCann, RN

### ***Crisis Intervention Services***

Twenty-four hour emergency telephone crisis intervention services provided to adults and children who are experiencing emotional distress, mental health or substance abuse issue, or suicidal thoughts/ behavior. Mobile response for on-site evaluation and intervention when needed. Walk-in crisis service is available during office hours in Outpatient Clinic. Daytime services provided by Clinical Services; Afterhours services provided by Northwest Connections (a contract agency).

## **CRISIS SERVICES**

- 24 hour Telephone Service
- Mobile Response
- Walk-in

*Services are billable to Medicaid and private insurance*

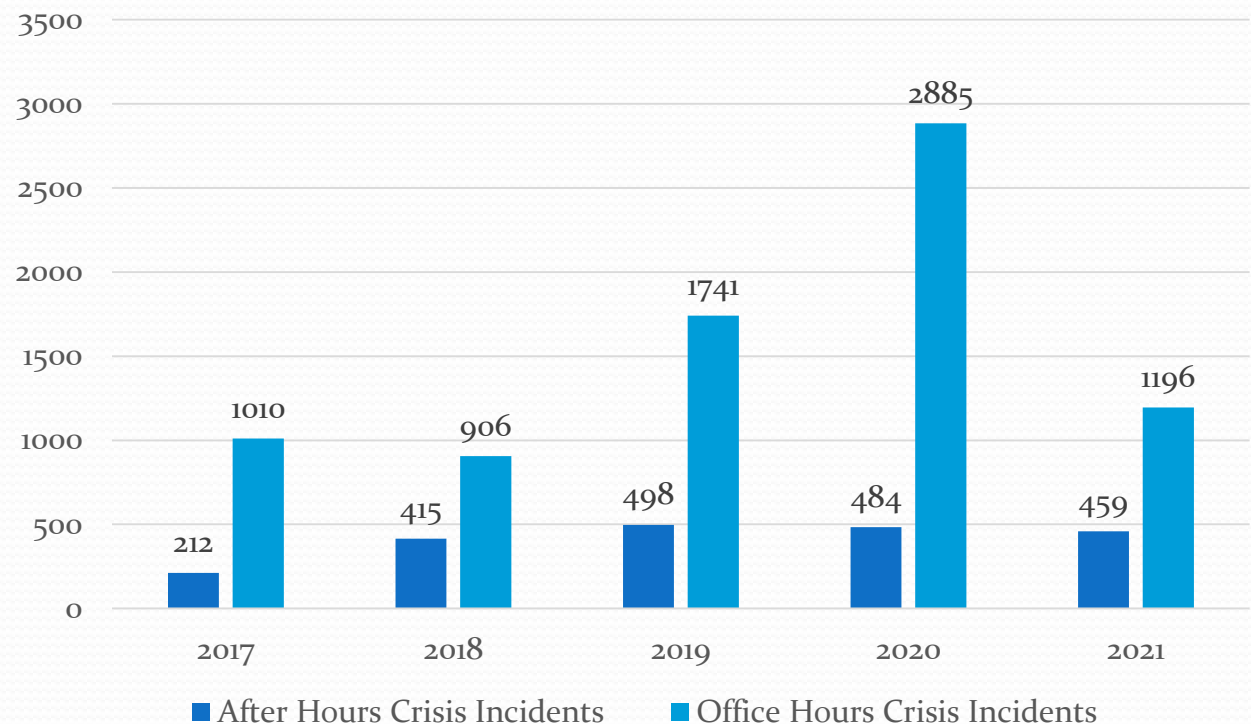
***Daytime Crisis provided by Clinical Services***

***Afterhours Crisis provided by Northwest Connections***

### ***Crisis Intervention Services***

Twenty-four hour emergency telephone crisis intervention services provided to adults and children who are experiencing emotional distress, mental health or substance abuse issue, or suicidal thoughts/ behavior. Mobile response for on-site evaluation and intervention when needed. Walk-in crisis service is available during office hours in Outpatient Clinic. Daytime services provided by Clinical Services; Afterhours services provided by Northwest Connections (a contract agency).

## Crisis Incidents



### Primary Crisis Staff:

Myranda Culver, MS, LMFT  
Kyla Luther, CSAC  
Alice Lawrence Retrum, RN  
Danielle Roelke, LPC-IT  
Corey Kanable, BS

Laura Dias Radesca, CSW  
Alison Barger, LPC  
Kelly McCann, RN  
Faith Peckham, BS



### ***Crisis Intervention Services***

Twenty-four hour emergency telephone crisis intervention services provided to adults and children who are experiencing emotional distress, mental health or substance abuse issue, or suicidal thoughts/ behavior. Mobile response for on-site evaluation and intervention when needed. Walk-in crisis service is available during office hours in Outpatient Clinic. Daytime services provided by Clinical Services; Afterhours services provided by Northwest Connections (a contract agency).

## **HOSPITAL DIVERSION**

- Diverting hospitalization *with a safety plan* is desirable whenever possible.

**Assessment determines  
if Diversion with Safety  
Plan is Appropriate**

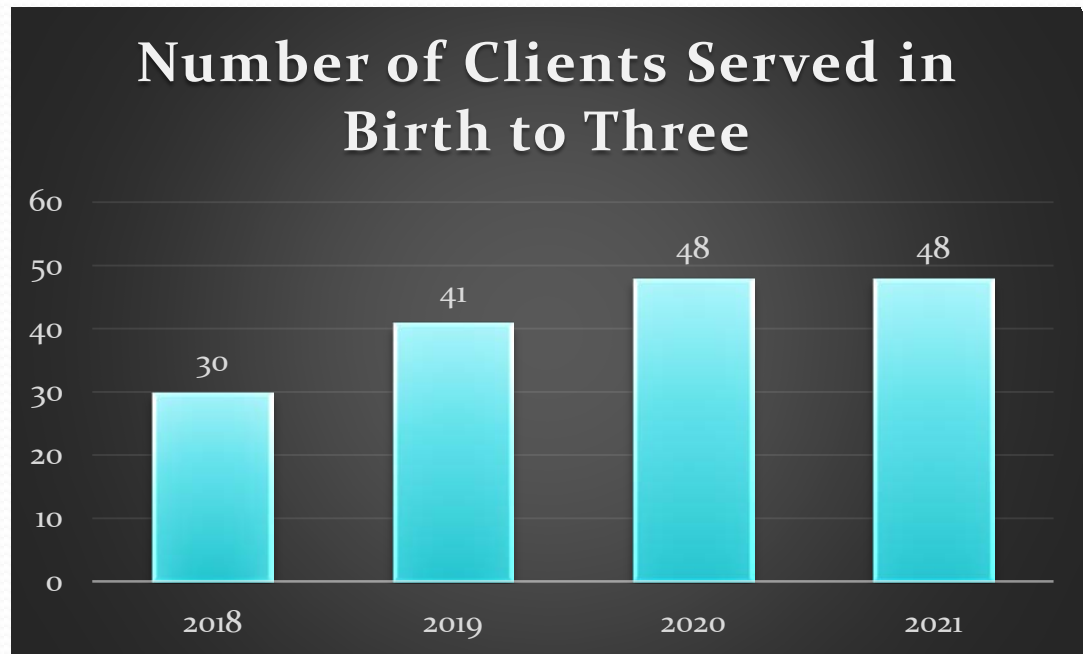
**Diversions are less  
traumatic and  
disruptive**



## Birth to Three Services

The Richland County Birth to Three Program is an early intervention program for children ages birth to 3 years of age that reside in the county.

To be eligible for the Birth to Three Program, a child must show a 25% delay in one or more of the key areas of development (social-emotional, physical, cognitive, adaptive and/or communicative), have a diagnosed condition that is likely to result a developmental delay or to have atypical development.



### Staff Members

*Laurie Couey, CSW*

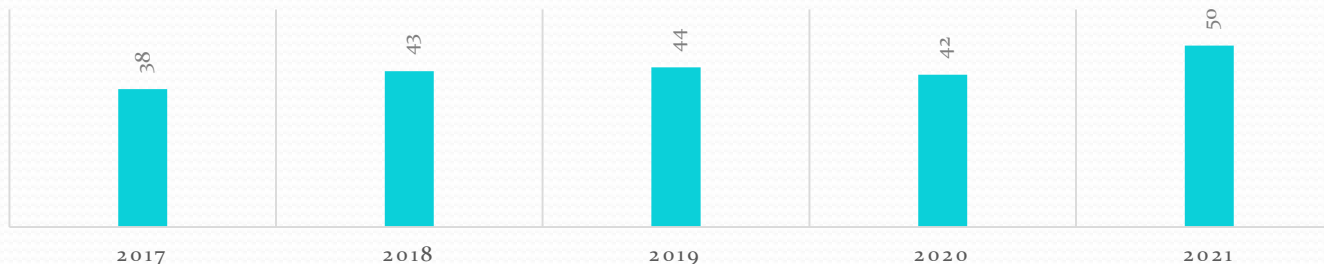
*Emily Shelton, CSW*

*Emily Phelps, CSW In-Training*

# Children's Long Term Support Services

- The Children's Long Term Support (CLTS) Waiver Program and Children's Community Option Program support the needs of families with a child with severe developmental, physical or emotional disabilities.
- Services provided include: assessments, respite care, supportive home care, support and service coordination and home modifications/adaptive aids.
- Funding sources include: Medicaid, CCOP, Parental Payment and Local Taxes

NUMBER OF CHILDREN'S LONG TERM  
SUPPORT CLIENTS



Staff Members

Laurie Couey, CSW

Emily Shelton, CSW

Emily Phelps, CSW In-Training

***Comprehensive  
Community  
Services***

CCS is a community-based psychosocial rehabilitation program for children and adults across the lifespan who have a diagnosed mental health or substance abuse condition and difficulty functioning independently.

Services include ongoing one-to-one support, psychotherapy, skills training, medication management, and crisis services.

## CCS

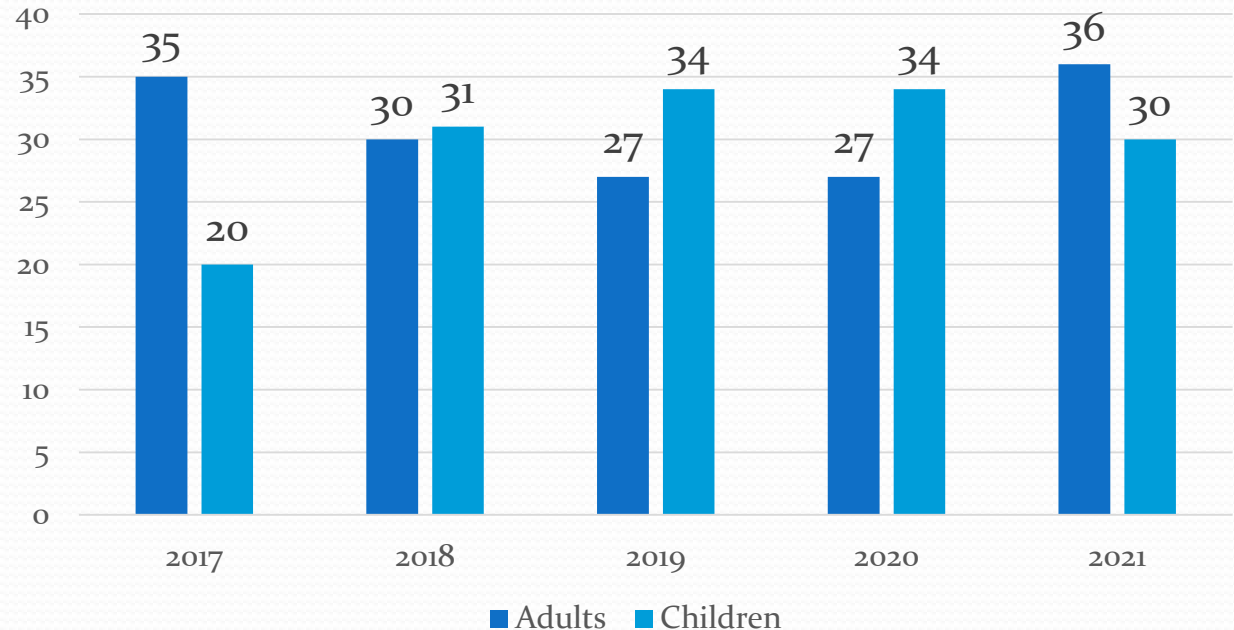
- Community Treatment Program
  - Serves Adults & Children Across the Lifespan
  - With Mental Health or Substance Abuse Disorder
  - Difficulties Functioning Independently
- Provides Psychosocial Supports to assist with living in the community
- Reduces the need for Long-Term Institutional Placements

### ***Comprehensive Community Services***

CCS is a community-based psychosocial rehabilitation program for children and adults across the lifespan who have a diagnosed mental health or substance abuse condition and difficulty functioning independently.

Services include ongoing one-to-one support, psychotherapy, skills training, medication management, and crisis services.

## **CCS Consumers**



### **CCS Staff**

Faith Peckham, BS  
Laura Dias Radesca, BS  
Alison Barger, LPC  
Myranda Culver, MS, LMFT

Corey Kanable, BS  
Alice Retrum, RN  
Kelly McCann, RN

***Comprehensive  
Community  
Services***

CCS is a community-based psychosocial rehabilitation program for children and adults across the lifespan who have a diagnosed mental health or substance abuse condition and difficulty functioning independently.

Services include ongoing one-to-one support, psychotherapy, skills training, medication management, and crisis services.

## **CCS REGIONALIZATION**

- CCS is part of the Wisconsin Rivers Regional CCS Collaboration
- This collaboration includes Sauk, Columbia and Richland Counties
- The region shares a webpage for those interested in CCS services and for providers interested in providing CCS Services
- Richland County has been part of the regional model of CCS care since regionalization was offered by the Wisconsin Department of Health Services
- The regional services model allow for 100% Medicaid reimbursement
- <http://wisconsinriverccs.org/>

### ***Other Services***

Intoxicated Drivers Program (IDP)

**Choices** (*Underage Drinking Offender Education*)

Community Recovery Services (CRS)

Community Options Program (COP)

Coordinated Services Team (CST)

Substance Abuse Residential Treatment

Mental Health Residential Services

Detox Services

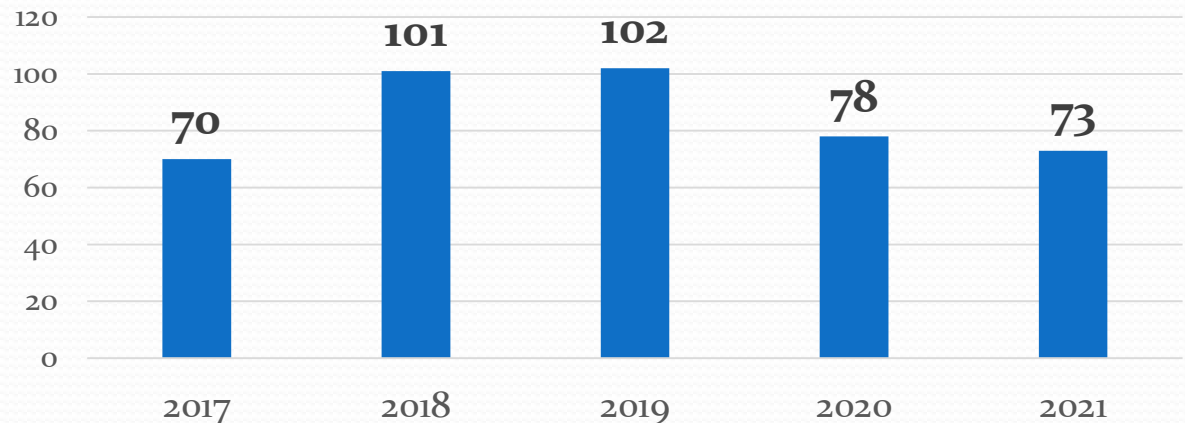
Inpatient Psychiatric Services

Consultation and Public Education

## Intoxicated Drivers Program

- IDP Assessment is conducted for individuals convicted of OWI offense.

### IDP Clients



### IDP Assessors

Tiffany Olson, SAC, MSW

Myranda Culver, MS, LMFT

### ***Other Services***

Intoxicated Drivers Program (IDP)

**Choices** (*Underage Drinking Offender Education*)

Community Recovery Services (CRS)

Community Options Program (COP)

Coordinated Services Team (CST)

Substance Abuse Residential Treatment

Mental Health Residential Services

Detox Services

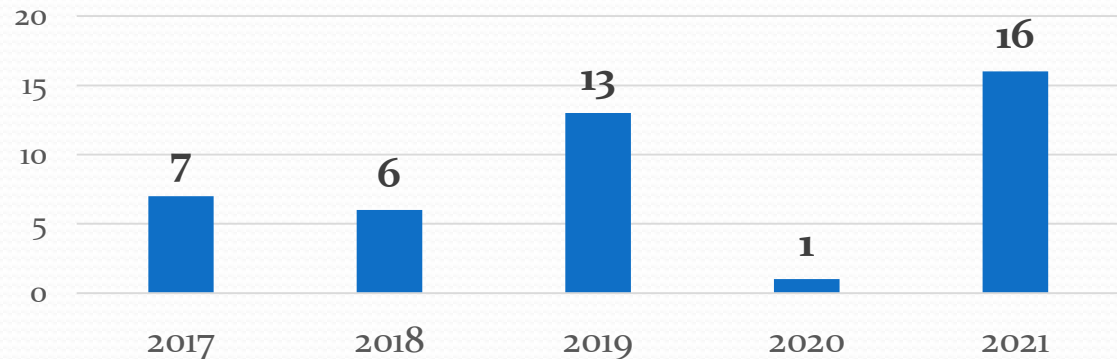
Inpatient Psychiatric Services

Consultation and Public Education

## CHOICES

- Evidence-based educational program (PRIME for Life) for youth who get under aged drinking ticket.

### Choices Participants



### Educators

Tiffany Olson, APSW, CSAC

Myranda Culver, MS, LMFT



### Other Services

Intoxicated Drivers Program (IDP)

Choices (Underage Drinking Offender Education)

Community Recovery Services (CRS)

Community Options Program (COP)

Coordinated Services Team (CST)

Substance Abuse Residential Treatment

Mental Health Residential Services

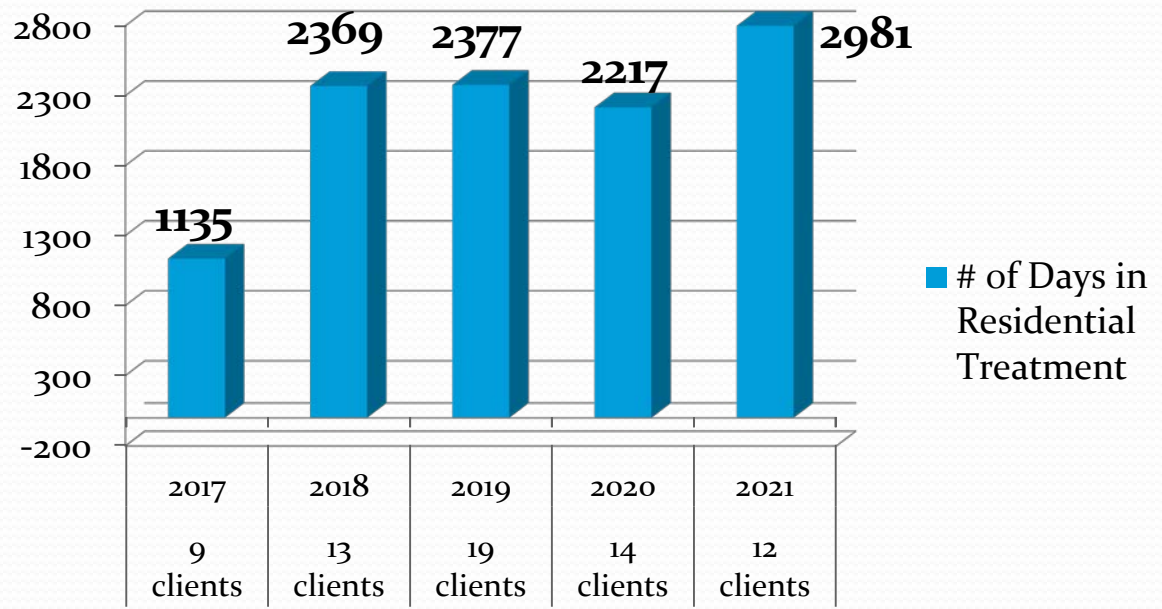
Detox Services

Inpatient Psychiatric Services

Consultation and Public Education

## RESIDENTIAL PLACEMENTS

- Residential Placements allow for both long term and step down placements for clients that would not otherwise be able to live safely alone in community settings
- Adult Family Homes and Community Based Residential Facilities may provide care to clients
- Clients typically are enrolled in Community Recovery Services or Comprehensive Community Services and/or have Medicaid as a payer source for services
- Crisis stabilization services may be provided to clients in need of short term services. Crisis stabilization services are billable to Medicaid and some private insurances.



### ***Other Services***

Intoxicated Drivers Program (IDP)

**Choices** (*Underage Drinking Offender Education*)

Community Recovery Services (CRS)

Community Options Program (COP)

Coordinated Services Team (CST)

Substance Abuse Residential Treatment

Mental Health Residential Services

Detox Services

Inpatient Psychiatric Services

Consultation and Public Education

## Coordinated Services Team Initiative

- The Coordinate Services Team Model is used in collaboration with the Comprehensive Community Services Model
- TEAM CST (Together Everyone Accomplishes More)
- CST is a wraparound model of care for children with behavioral health issues.
- CST targets children and families involved in two or more systems of care (such as mental health, long term care, juvenile justice, child welfare, substance abuse or special education) who have complex needs.
- The CST Model serves children enrolled in CCS Services and serves children and families without a Medicaid funding source.

### ***Other Services***

Intoxicated Drivers Program (IDP)

**Choices** (*Underage Drinking Offender Education*)

Community Recovery Services (CRS)

Community Options Program (COP)

Coordinated Services Team (CST)

Substance Abuse Residential Treatment

Mental Health Residential Services

Detox Services

Inpatient Psychiatric Services

Consultation and Public Education

## Detox

- When person is incapacitated by alcohol and in need of protective custody in a licensed detox facility



### Other Services

Intoxicated Drivers Program (IDP)

Choices (Underage Drinking Offender Education)

Community Recovery Services (CRS)

Community Options Program (COP)

Coordinated Services Team (CST)

Substance Abuse Residential Treatment

Mental Health Residential Services

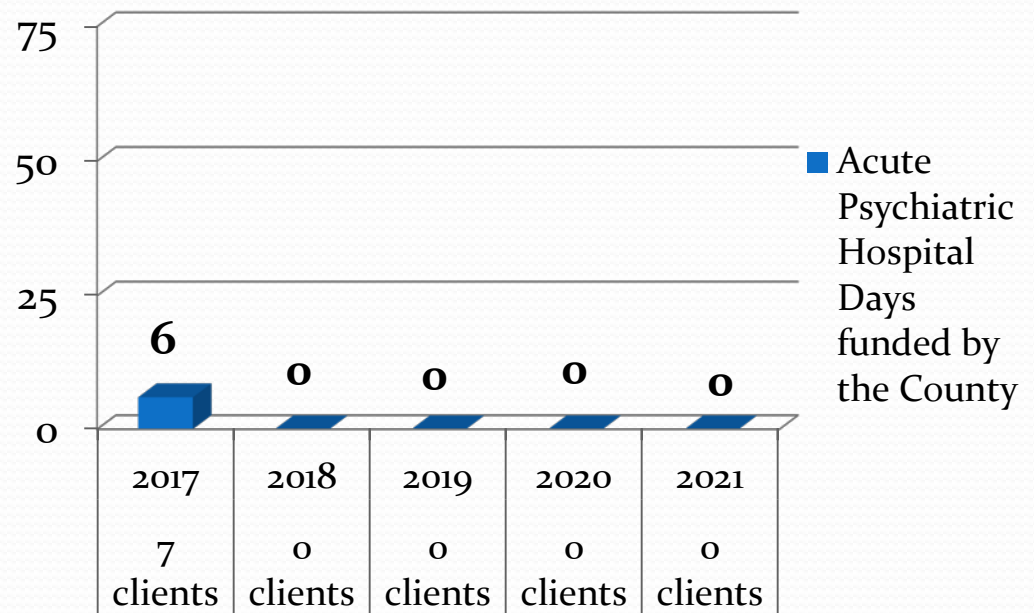
Detox Services

Inpatient Psychiatric Services

Consultation and Public Education

## Inpatient Psychiatric Hospitalization

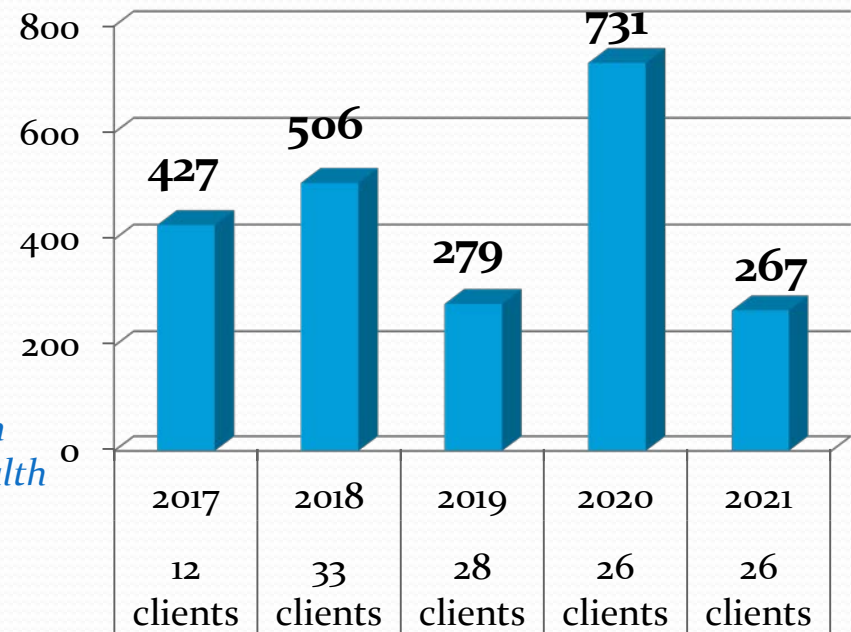
- County funds emergency detentions when person does not have insurance.



# Institutional Costs

- Institutional placements are one of the greatest liabilities for the Health and Human Services Budget
- Cost per day ranges from \$999 to 1,400 (\$30,000 + *per month*)
- Medicaid covers portion of individual under 22 year or over 65 years
- Medicare and Private insurance may cover a portion of the costs
- Services like CCS, CRS, and Outpatient Psychiatric Services help avoid the need for long term institutional placements

■ # of Days in  
Mental Health  
Institutes  
(MHI)



# Adult Protective Services

- The Adult Protective Services System is designed to protect Richland County's vulnerable adults (18 years of age and over) from treatment or circumstances defined as abuse, neglect or financial exploitation.
- During 2021 APS services responded to 61 Adult at Risk and Elder Abuse Reports
- Richland County receives \$10,554 annually to assist with services to persons age 60 and over who meet abuse and neglect criteria
- Adult Protective Services staff work closely with the court to assist those in need of guardianship and protective services actions

Adult Protective Services Staff  
Kelly McCann, RN  
Corey Kanable, BS



# Child and Youth Services (CYS)

---

Orientation information for 2022



# Staff

---

- Manager-Jessica Stanek
- Supervisor-Brittney Wirtz
- Social Workers-Bradi Donahoe, Shelby Miller, Hannah Udelhoven, Vacant, Vacant
- Youth Aid-Eric Ives
- Family Preservation-Contracted Position-Cecilia Degenhardt & LTE  
Contracted Position Allicia Woodhouse (both part-time, less than 28 hours)

# Programs

---

- Child Protective Services (CHIPS-Child in Need of Protection and Services) Child Welfare-Serves at-risk families in the community and links them with preventative services.
- Youth Justice(YJ also known as Juvenile Justice/Delinquency)/Juvenile in Need of Protection and Services (JIPS)
- Independent Living (IL)/YES
- Foster Care and Kinship Licensing



# Placements Governed by CYS

---

- Children's Institutional and Detention Center Placements Include:
  - Children hospitalized under emergency detentions who are a danger to themselves or others and cannot be maintained in the community. (Hospitalizations occur under the Behavioral Health process)
  - Children placed in residential care centers are utilized for both short and long-term assessment and treatment facilities for those children/youth on supervision who may have significant trauma, mental health needs, behavioral problems, or cognitive impairments.
  - Secure detention is used for youth who have criminal charges and are a danger to themselves or others and cannot safely be maintained in the community.

# Placements Governed by CYS continued

---

- Foster Care/Treatment Foster Care/Children's Group Homes
  - Children/Youth can be placed in foster care and treatment foster care under CHIPS and YJ cases when they cannot be maintained safely in the community.
  - Group Homes are utilized for placements for children/youth who have a higher level of needs and require more intensive or overnight supervision. This setting has 24/7 awake staff to provide for increased monitoring and safety of children while maintaining them in a community setting.



# Other Services

---

- Kinship

- Court Ordered-relative placements that allow for children to be placed with family members rather than formal placement in Foster Care. Families can qualify for this supportive payment while also pursuing Foster Care Licensing.
- Voluntary Kinship-supportive payment to families who have taken guardianship or other long-term placement of children.

- Foster Care Licensing

- Staff license and support local foster parents in the Community.
- There is a high need for Licensed Foster homes across the State at this time.
- Due to short staffing levels at this time recruitment and retention efforts for Foster homes in Richland County are limited.

# Other Services Continued

---

- YES-Youth Empowerment Services
  - Mentoring for youth under Youth Justice supervision or other at-risk youth
  - Restorative and Community Service-based Activities
  - Development of Independent Living Skills (Daily Living, Self Care, Relationships and Communication, Housing and Money Management, Work and Study Life, Career and Educational Planning, Looking Forward)
  - Development of social skills
  - Team building exercises



# Family First Legislation

---

- Four Transformation Priorities
  - To strengthen local communities + build services to support families in their homes.
  - To keep children in family settings whenever possible.
  - To improve our group care system.
  - To support our workforce with solutions and improvements.
- For more information on Family First Legislation:
  - <https://dcf.wisconsin.gov/family-first>



# AGING & DISABILITY RESOURCE CENTER



**Connecting Richland County  
Residents And Their Families  
To The Resources They Need**



# Vision

---

- Focused on customer service
- Welcoming to all
- Trusted source of information, assistance and advocacy
- Responsive to unique needs of each consumer
- Highly visible in the community



# Some abbreviations to know

---

- ADRC – Aging and Disability Resource Center
- I & A – Information and Assistance
- EBS – Elder Benefit Specialist
- DBS – Disability Benefit Specialist
- FC – Family Care
- IRIS – Include, Respect – I Self-direct
- MCO – Managed Care Organization



# Who we serve

---

- Aging adults, 60+
- Adults with physical disabilities, 18-59
- Adults with developmental disabilities, 18-59
- Adults with mental health or substance use disabilities, 18-59
- Youth with disabilities transitioning to adult services, 17 1/2
- Families, friends, caregivers of any of the above
- Caregivers
- Service providers for any of the above



# Who we are

- County employed staff include:
  - 8 Full-time staff, 1 Part-time staff (8 hrs/wk)
    - Manager
    - Elder Benefit Specialist
    - Disability Benefit Specialist
    - 3 Information and Assistance Specialist
    - Transportation Secretary
    - Receptionist
    - Part time Clerical Assistant
  - 4 Temporary Casual Drivers (17 hrs/wk)
- Volunteers
  - 23 Volunteer Driver Escorts



# What we do

- Information and Assistance
- Options Counseling
- Transition Services for Youth
- Family Care Eligibility and Enrollment
- Benefit Specialist Program
  - Disability (adults 18 – 59)
  - Elder (adults over 60)
- Transportation Assistance
- Health Promotion Activities
- Dementia Care Specialist Program
- Caregiver programs

# Return on Investment

## Aging and Disability Resource Centers A Meaningful and Impactful Investment for Wisconsin



\$14,400 = average cost per hospital re-admission

\$530 = average cost per emergency room visit

### ADRCs prevent...

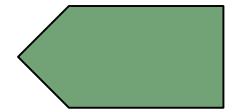
61 hospital re-admissions per 1,000 served  
101 emergency room visits per 1,000 served

### ADRCs save...

Nearly \$1,000,000 per 1,000 served

Every \$1 invested into Wisconsin  
ADRCs leads to a savings of \$2.48.

248%  
Return on  
Investment



Our local office has a  
return on investment  
of 456% which  
means for every \$1  
invested into our  
local ADRC there is a  
savings of \$4.56





# What was accomplished in 2021

---

- Over 2,600 citizens received I & A services a total of 4,565 contacts
- 94 members enrolled in long-term care programming - Family Care or IRIS
- In partnership with schools assisted 5 families transition their youth into adult services
- Assisted 147 residents with disabilities to receive benefits - \$590,073 (DBS position was open for 3 months)
- Provided benefit counseling and advocacy to 333 senior residents – saving over or receiving benefits - \$1,448,000



# What was accomplished in 2021

---

- Provided 3,319 one way medical appointment trips; volunteer drivers provided 6,180 service hours driving over 134,928 miles
- Provided 709 wheel chair trips traveling a total of 18,249 miles
- Provided 19 families with caregiver support funding for respite and home services
- Participated in providing education and support to enroll seniors in the Senior Farmer's Market voucher program
- Conducted 5 Medicare Education workshops
- Partnered with Symons Recreation to provide Tai Chi and Strong Bodies health promotion classes.



# Program Funding

---

- ADRC programs: ADRC General Purpose Revenue Grant, Federal Match – no tax levy
- Aging Programs: Greater Wisconsin Agency on Aging Resources - \$254,664 revenue required match tax levy
- Transportation Volunteer Driver program and bus program: 85.21 grant \$79,889, 5310 grant varies on award and is not guaranteed. Tax levy is used for required match for transportation



# Partnerships

---

- Homelessness Coalition
- Food Pantry
- Transition Advisory Council (CCOT)
- Southwest Wisconsin Transit Team
- Southwest Wisconsin Regional Planning Commission
- Richland Center School District
- ADRC State Network
- Association of Aging and Disability Professionals
- Greater Wisconsin Agency on Aging Resources
- ADRC of Eagle Country - 4 county collaboration
- Alzheimer's and Dementia Alliance
- Richland Hospital
- Wisconsin Institute of Healthy Aging
- Symons Recreation
- County Sheriff/City Police/County Court System
- Richland County I Team
- Richland County Care Coalition



# You will see us around the county

---

- Senior Expo
- Get Real Day
- Mentoring Day
- Women's Health Fair
- Senior Center
- Wellness Fairs
- Dementia Capable Programs
- Support Groups
- Providing Public Transportation



# We are here for you!!

---

- Contact us whenever you need information and assistance in finding services for you, your family or friends
- Consider using our Options Counseling service when planning future long-term care plan before it is needed
- We simplify Medicare and other benefits
- When one of your constituents appears to be at-risk for abuse and neglect please contact us
- Board Members are invited to tour the ADRC



# Questions????

**Call the ADRC at 608-647-4616 for  
more information.**



# Public Health



**Public Health**  
Prevent. Promote. Protect.

# State Public Health System

- Required under State Statute 250
- Wisconsin Department of Health Services-  
Division of Public Health
- Secretary appointed by the Governor
- Appointed State Health Officer
- Appointed Chief Medical Officer
- Five public health regions in Wisconsin

# **Bureaus and Offices Within the Division Public Health**

- Public Health Policy and Practice Alignment
- Communicable Disease
- Community Health Promotion
- Environmental and Occupational Health
- Health Informatics
- Preparedness and Emergency Health Care
- Aging and Disability Resources

# Local Public Health

[Chapter 251](#) – Local Health Officials

[Chapter 252](#) – Communicable Diseases

[Chapter 253](#) – Maternal and Child Health

[Chapter 254](#) – Environmental Health

[Chapter 255](#) – Chronic Disease and Injuries

# Public Health Funding in Richland County

- Federal block grant funding
- Budget is supported with competitive grants
- Limited revenue streams
- Tax levy dollars make the department whole



# Public Health Nurse

- BSN required under HFS 139
- Public Health Clinic Nurse position added in 2020 that permits an RN without a Bachelor's Degree to practice in a Public Health setting
- Communicable disease control and prevention
- Population vs. patient based care
- Assessment, Assurance, and Policy Development
- Educate communities through community-based intervention programs

# Registered Sanitarian

- Health-related degree and examination required for Registered Sanitarian licensure
- Environmental health programs
- Consortia contract position, in Richland County one day every other week, position funded by prevention block grant and county funds



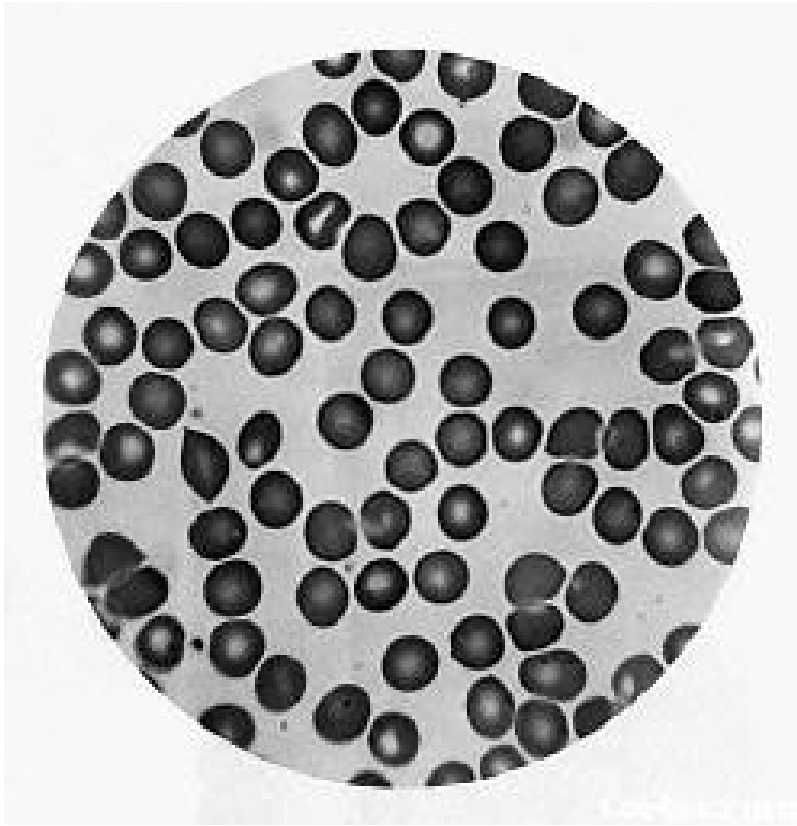
# Health Educators

- Community Health Education Degree
- Certified Health Education Specialist certification
- Work in program areas such as chronic disease control, tobacco control, and prevention programs
- Active participant in the Community Health Needs Assessment process and the creation of Community Health Improvement Plan
- Positions are usually grant funded

# **Richland County HHS Public Health Programming**

- Communicable Disease
- Maternal Child Health
- Environmental Health
- Adult Health
- Prenatal Care Coordination
- Emergency Preparedness
- Senior Nutrition

# Communicable Disease Prevention and Control



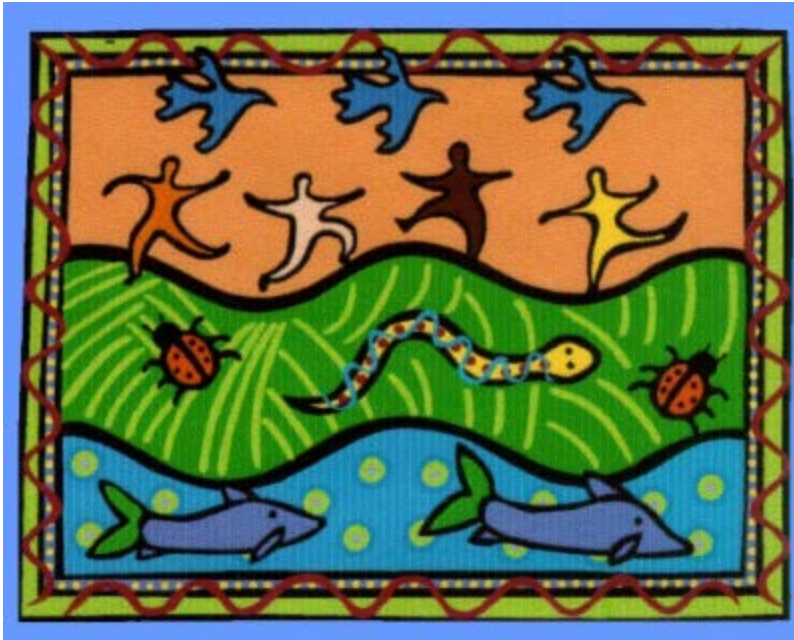
- Immunizations
- Communicable Disease Investigation and Follow Up
- Tuberculosis Prevention and Control/ TB Dispensary
- Rabies Prevention and Control
- Bloodborne Pathogens Training

# Maternal Child Health



- Prenatal Care Coordination
- Postpartum Home Visits

# Environmental Health



- Private Well Water Testing
- Radon
- Childhood Lead Poisoning Prevention
- Human Health Hazard Investigation and Abatement

# Adult Health



- Wisconsin Well Woman Program
- Loan Closet
- Public Health Home Visits

# Emergency Preparedness and Response

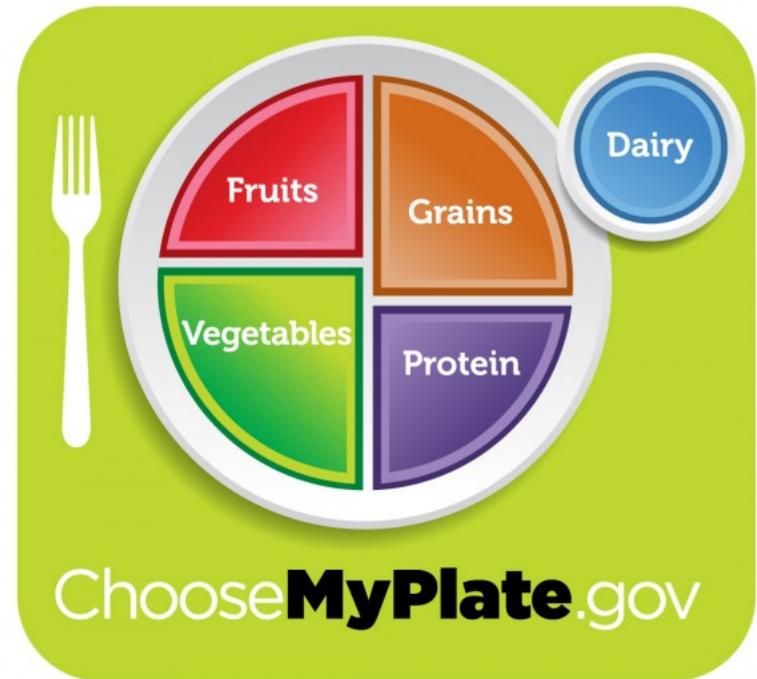
- Public Health Emergency Plan, Mass Clinic, and Pandemic Influenza Plans
- Local and Regional Exercises
- Public Health Emergency Preparedness Capabilities
- Mass Fatality Planning



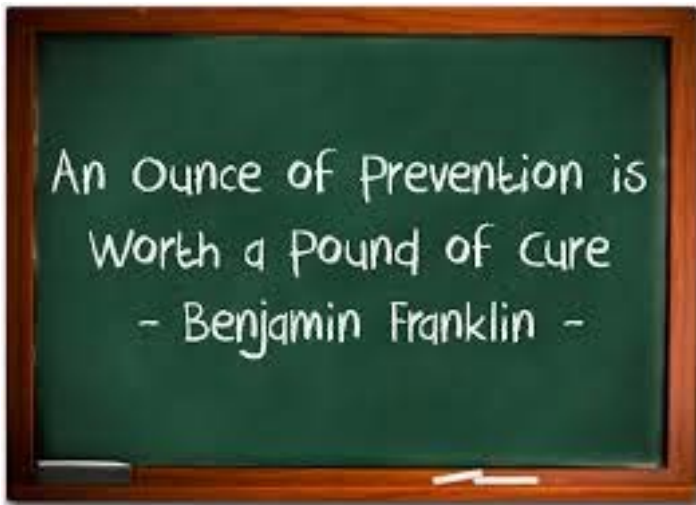


# Senior Nutrition Program

- Older Americans Act Nutrition Programs
- Area Agency On Aging (GWAAR)
- Congregate, Home-Delivered, and Grab 'n Go Meals
- Senior Farmers' Market Nutrition Program



# The Value of Prevention



- For every dollar spent on early childhood health and development \$9 is saved in future spending on health, social, and justice services. Return on investment 800%
- Every dollar spent on the childhood immunization program saves \$10.00 in future health care costs
- Every \$1 invested in tobacco prevention programs saves up to \$20 in future health care costs. Return on investment: 1900%.
- Investment of \$10.00 per person per year in public health prevention services could save over \$2 billion in healthcare costs over a two-year period

Questions???

Thank You!