

Rules & Resolutions Committee

Recommendations for the County Board

October 2021

Proposal by Administrator to:

- Have County Board Chair appoint 3 members of 5-member Committee on Committees
- Categorize all bodies into:
 - Standing committees
 - Boards
 - Commissions
 - Sub-committees
 - Seats on partner organizations
- Have County Board Chair appoint “standing committee” chairs

Main Justification: *Ease the streamlining of County services through the establishment of a County Board Chair “cabinet”*

Action: *Forward informational proposal to the County Board to inform and invite feedback*

<https://www.youtube.com/watch?v=AN9ZGmOTfOE> (34:30 – 1:49:50)

November 2021

Committee Reviewed:

- County Board feedback (i.e. “less democratic”)
- Justification for change:
 - Allow County Board Chair to create more cohesion to lead us through challenging finances (consolidation)
 - Allow committees to be appointed at organizational meeting (efficiency)
- Interest in having the County Board Chair/Vice Chair candidates submit resumes before their selection

Summary: *Committee had healthy discussion/debate over organizational structure of County Board*

Informal Action: *Support research on how other counties appoint committee members*

<https://www.youtube.com/watch?v=goz4LMR5RQY>

December 2021

Committee began discussing:

- Process for running for County Board Chair/Vice Chair
- Orientation for new term and committee/board/commission interest form

Committee took the following actions on:

- Encouraging County Board members to attend WCA educational webinars on
 - Committee Structure and Rightsizing
 - Organizational Meeting
 - County Board Rules
- Researching how bodies pay departmental bills and monitor annual spending
- After reviewing research on how other counties appoint County Board members to recommended that:
 - The County Board Chair appoints supervisor members to bodies with County Board confirmation at the organizational meeting
 - Committees should be appointed at organizational meeting
 - The County Board Chair may remove supervisor members from bodies (i.e. committees, boards, commissions) with County Board confirmation, with the option for resignation before the removal
 - Committee chairs should be elected by committee members

<https://www.youtube.com/watch?v=zIIDTXuWEU8&feature=youtu.be>

County	2010 census population
Price County	13,416
Bayfield County	14,993
Burnett County	15,289
Ashland County	15,617
Sawyer County	16,399
Richland County	17,459
Green Lake County	18,755
Kewaunee County	20,387
Iowa County	23,618
Waushara County	24,193
Door County	27,472

Peer County Research

- Similar population
- Administrator form of government

County	2010 census population	Who Appoints Committee Members
Price County	13,416	Board Chair, with County Board confirmation
Bayfield County	14,993	Board Chair, with County Board confirmation
Burnett County	15,289	Board Chair, with County Board confirmation
Ashland County	15,617	Combination of Board Chair and Administrator (see notes)
Sawyer County	16,399	Board Chair, with County Board confirmation
Richland County	17,459	
Green Lake County	18,755	Combination of Board Chair and Administrator (see notes)
Kewaunee County	20,387	Board Chair, with County Board confirmation
Iowa County	23,618	Committee on Appointments (3 members - Chair, Vice Chair, 2nd Vice Chair)
Waushara County	24,193	Board Chair, with exceptions (see notes)
Door County	27,472	Board Chair, with County Board confirmation

Peer County Research

1. County Board Chair usually appoints member to sub-bodies

County	2010 census population	Who Appoints Committee Members	Appointments Made by What Deadline
Price County	13,416	Board Chair, with County Board confirmation	May Board meeting
Bayfield County	14,993	Board Chair, with County Board confirmation	May Board meeting
Burnett County	15,289	Board Chair, with County Board confirmation	Organizational meeting
Ashland County	15,617	Combination of Board Chair and Administrator (see notes)	Organizational meeting
Sawyer County	16,399	Board Chair, with County Board confirmation	May Board meeting
Richland County	17,459		
Green Lake County	18,755	Combination of Board Chair and Administrator (see notes)	After organizational meeting
Kewaunee County	20,387	Board Chair, with County Board confirmation	Organizational meeting
Iowa County	23,618	Committee on Appointments (3 members - Chair, Vice Chair, 2nd Vice Chair)	May Board meeting
Waushara County	24,193	Board Chair, with exceptions (see notes)	
Door County	27,472	Board Chair, with County Board confirmation	

Peer County Research

1. County Board Chair usually appoints member to sub-bodies
2. Appointments are made at organizational meeting or May Board meeting

County	2010 census population	Who Appoints Committee Members	Appointments Made by What Deadline	Who Removes Committee Members
Price County	13,416	Board Chair, with County Board confirmation	May Board meeting	Board Chair
Bayfield County	14,993	Board Chair, with County Board confirmation	May Board meeting	Board Chair has a discussion with member and asks if they can step down
Burnett County	15,289	Board Chair, with County Board confirmation	Organizational meeting	Ethics committee, after Corp. Counsel investigation
Ashland County	15,617	Combination of Board Chair and Administrator (see notes)	Organizational meeting	
Sawyer County	16,399	Board Chair, with County Board confirmation	May Board meeting	Board Chair, with County Board confirmation
Richland County	17,459			
Green Lake County	18,755	Combination of Board Chair and Administrator (see notes)	After organizational meeting	
Kewaunee County	20,387	Board Chair, with County Board confirmation	Organizational meeting	Unofficial, discussions only
Iowa County	23,618	Committee on Appointments (3 members - Chair, Vice Chair, 2nd Vice Chair)	May Board meeting	Not defined
Waushara County	24,193	Board Chair, with exceptions (see notes)		
Door County	27,472	Board Chair, with County Board confirmation		

Peer County Research

1. County Board Chair usually appoints member to sub-bodies
2. Appointments are made at organizational meeting or May Board meeting
3. Removal of members of sub-bodies varies

County	2010 census population	Who Appoints Committee Members	Appointments Made by What Deadline	Who Removes Committee Members	Who Determines Committee Chairs
Price County	13,416	Board Chair, with County Board confirmation	May Board meeting	Board Chair	Each committee
Bayfield County	14,993	Board Chair, with County Board confirmation	May Board meeting	Board Chair has a discussion with member and asks if they can step down	Each committee
Burnett County	15,289	Board Chair, with County Board confirmation	Organizational meeting	Ethics committee, after Corp. Counsel investigation	Each committee
Ashland County	15,617	Combination of Board Chair and Administrator (see notes)	Organizational meeting		Each committee
Sawyer County	16,399	Board Chair, with County Board confirmation	May Board meeting	Board Chair, with County Board confirmation	Each committee, by secret ballot
Richland County	17,459				
Green Lake County	18,755	Combination of Board Chair and Administrator (see notes)	After organizational meeting		Each committee
Kewaunee County	20,387	Board Chair, with County Board confirmation	Organizational meeting	Unofficial, discussions only	Board Chair, with County Board confirmation
Iowa County	23,618	Committee on Appointments (3 members - Chair, Vice Chair, 2nd Vice Chair)	May Board meeting	Not defined	Each committee
Waushara County	24,193	Board Chair, with exceptions (see notes)			
Door County	27,472	Board Chair, with County Board confirmation			

Peer County Research

1. County Board Chair usually appoints member to sub-bodies
2. Appointments are made at organizational meeting or May Board meeting
3. Removal of members of sub-bodies varies
4. Sub-bodies usually select sub-body chairs

January 2022

Committee took the following actions to recommend:

- Having sub-bodies monitor the actual vs. approved annual budget in funds managed by their department/s on a minimum quarterly basis.
https://www.youtube.com/watch?v=uu5_UASw4tc (02:25 – 16:45)
- Developing a list of required and optional responsibilities for the Chair and Vice Chair https://www.youtube.com/watch?v=uu5_UASw4tc (16:45 – 36:30)
- A 7-step process for running for County Board Chair/Vice Chair
https://www.youtube.com/watch?v=uu5_UASw4tc (36:30 – 55:35)
- Drafting options for restructuring committees to improve efficiency and accountability (*October restructuring proposal was reconsidered after watching 12/13/21 WCA webinar on Committee Structure and Rightsizing*)
https://www.youtube.com/watch?v=uu5_UASw4tc (55:35 – 1:46:00)

Current Financial Practices of Sub-bodies

Committee/Board/Commission	Approves Monthly Bills?	Notes	Monitors Annual Budget of Reporting Department/s?	Notes
Agriculture & Extension Education	Yes		No	
Child Support	Yes		No	
Emergency Management	No		No	
Fair & Recycling	Yes		No	
Finance & Personnel	No		No	
Health & Human Services	No	Board reviews vouchers between \$2k and \$10k	Yes	
Highway	Yes	Bills referred to as vouchers	No	
Joint Ambulance	Yes	Only quarterly	No	Review expenses only
Land Conservation	Yes		No	
Law Enforcement and Judiciary	Yes	Approves Sheriff's invoices	Yes	All departments except Coroner
Parks	Yes		No	
Pine Valley	Yes	Bills referred to as vouchers	Yes	Accts receivable, cash receipts, cash balance, revenues
Property	No		No	
Symons	Yes		Yes	
UW-Platteville Richland	Yes	Maintenance, not Food Service	Yes	Maintenance + Food Service
Veterans Service	No		Yes	
Zoning and Land Information	Yes		No	

Process for Running for County Board Chair/Vice Chair

1. The roles of the Board Chair and Vice Chair, as defined in the policy titled *“Authority of Management, Roles of Members and Chairs of Committees, Boards and Commissions”* shall be distributed in the welcome letter for newly elected County Board members.
2. Candidates for Chair and Vice Chair are strongly encouraged to indicate their interest in the positions Committee/Board/Commission and Seat Preference form.
3. Candidates are encouraged to answer two additional questions (beyond the minimum questions on the Supervisor Biography form):
 - If you are elected, are there things you will try to change or do differently as County Board Chair/Vice Chair?
 - How would you describe the style you will use in working with your fellow Supervisors, County committees, County Administrator and other staff?
4. All completed forms (i.e. Committee/Board/Commission and Seat Preference, Supervisor Biography, County Board Chair/Vice Chair candidate answers) will be distributed to all County Board members-elect in advance of the organizational meeting. This will facilitate the process of electing the Chair and Vice Chair, and provide information to the entire board about biographies and appointment preferences.
5. Candidates for County Board Chair and Vice Chair may directly contact County Board members-elect to campaign for the positions.
6. The County Clerk shall run the organizational meeting until a Chair has been elected.
7. At the organizational meeting, nominations shall be made and seconded, and the election of Chair and Vice Chair shall follow the verbiage already defined in County Board rules.

February 3, 2022

Three committee restructuring options were considered and the we decided to further develop a hybrid of 2 of the options.

Why did we look at these options?

- County currently has 54 bodies it runs or participates in.
- Fewer meetings would encourage a shift in focus from day-to-day management of staff to policy development
- Gives supervisors the ability to attend more meetings so they are better informed of county-wide issues
- WCA presentation from La Crosse and Ozaukee Counties attested to increased accountability from all (i.e., County Board members, the Administrator, and Department Heads)
- State law gives us a lot of freedom on how to structure, with some parameters.

https://www.youtube.com/watch?v=cFO8wXD_Rzk (0:12:15 – 1:37:20)

February 17, 2022

Recommended responsibilities for the County Board Chair:

- Be responsible for the preparation of the agenda of the County Board in conjunction and with the assistance of the County Administrator and County Clerk.
- Remove ability to concur to the Administrator's appointment of department heads *(Richland County Administrator job description)*
- Acts as a voting member, if a quorum is not otherwise present for a Standing Committee.
- Take care that all federal, state and local laws, rules and regulations, and board policies pertaining to county government are enforced.
- Such other powers and duties as are set forth in County ordinances or resolutions
- Assign all matters to the appropriate committee when there is doubt.
- Represent the County at legislative hearings, conventions or other matters pertaining to the county. The Chair may delegate to department heads, County Administrator, other elected and appointed officers and other Board members such roles and responsibilities.
- Acts as the chief elected spokesperson, and coordinates with the Administrator, who is the chief administrative spokesperson for the County.
- Remove appointed committee members with approval by majority of the County Board.
- Call for a vote of ayes, noes, and abstentions *(remove "excuse members from voting on a roll call vote.")*

<https://www.youtube.com/watch?v=4Er-7cn5Li0> (0:02:10 – 1:38:30)

Process for Running for County Board Chair/Vice Chair (*revised 2/17/22*)

1. The roles of the Board Chair and Vice Chair, as defined in the policy titled *“Authority of Management, Roles of Members and Chairs of Committees, Boards and Commissions”* shall be distributed in the welcome letter for newly elected County Board members.
2. Candidates for Chair and Vice Chair are strongly encouraged to indicate their interest in the positions Committee/Board/Commission and Seat Preference form.
3. Candidates are encouraged to answer two additional questions (beyond the minimum questions on the Supervisor Biography form):
 - If you are elected, are there things you will try to change or do differently as County Board Chair/Vice Chair?
 - How would you describe the style you will use in working with your fellow Supervisors, County committees, County Administrator and other staff?
4. All completed forms (i.e. Committee/Board/Commission and Seat Preference, Supervisor Biography, County Board Chair/Vice Chair candidate answers) will be distributed to all County Board members-elect in advance of the organizational meeting. This will facilitate the process of electing the Chair and Vice Chair, and provide information to the entire board about biographies and appointment preferences.
5. Candidates for County Board Chair and Vice Chair may **not** directly contact County Board members-elect to campaign for the positions.
6. The County Clerk shall run the organizational meeting until a Chair has been elected.
7. At the organizational meeting, nominations shall be made and seconded. **Each candidate is allowed 10 minutes to speak and answer questions.** The election of Chair and Vice Chair shall follow the verbiage already defined in County Board rules.

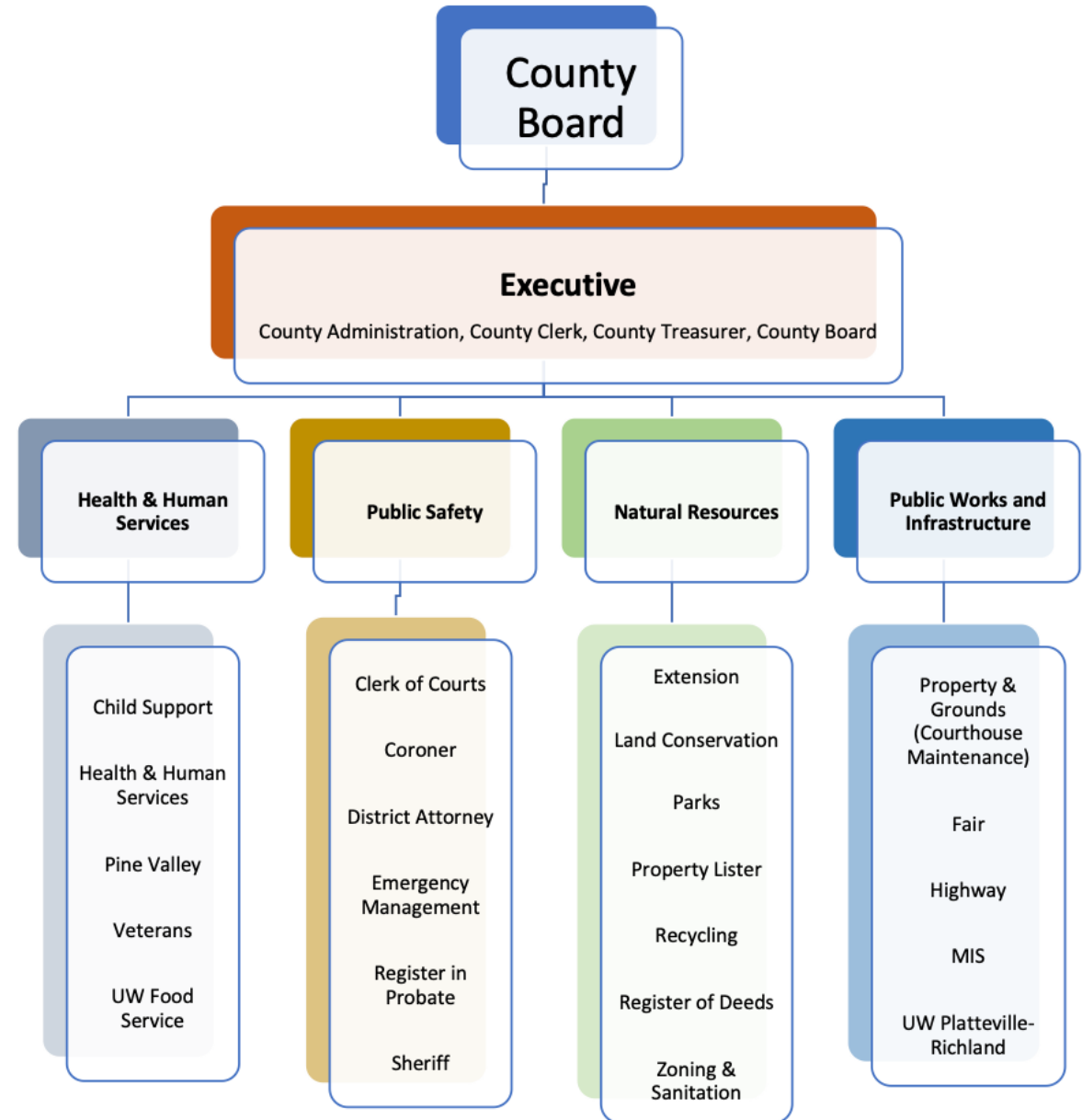
<https://www.youtube.com/watch?v=4Er-7cn5Li0> (1:38:30 – 1:54:35)

February 17, 2022

Committee adopted this framework for committee/commission/board restructuring and authorized returning to the Rules & Resolutions Committee with a revised

Committee/Commission/Board Structure document incorporating the changes.

<https://www.youtube.com/watch?v=4Er-7cn5Li0> (1:54:35 – 2:41:50)

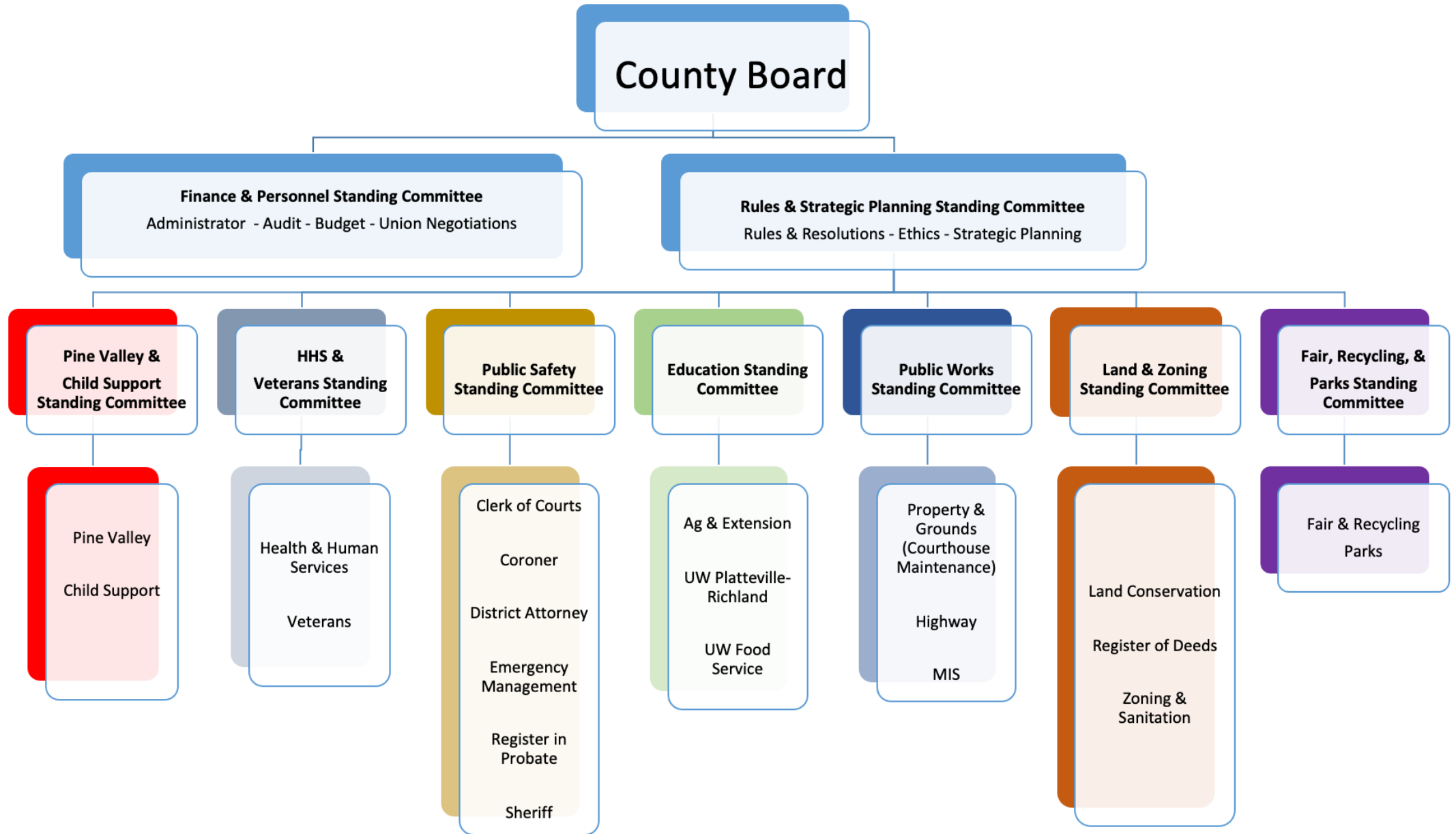


Post 2/17/22 Feedback

- UW-Platteville Richland Committee needs more focus on education/culture (*Gentes, Brewer*)
- Fair Committee & Parks Commission are sources of labor for both departments, and keeping citizens and County Board members on the same committee is needed for now (*Severson*)
- Concern about length of meetings (*Severson*)
- Concern about not enough time for department head oversight (*Seep*)
- Executive Committee will have too much on its plate (*Luck, Severson*)

Changes Made

- UW-Platteville Richland Committee needs more focus on education/culture (Gentes, Brewer) *Created Education Standing Committee, added language about promotion/education*
- Fair Committee & Parks Commission are sources of labor for both departments, and keeping citizens and County Board members on the same committee is needed for now (Severson) *Kept both bodies intact but combined them, added language about creating sustainable plan*
- Concern about length of meetings (Severson) *Increased the number of standing committees from 5 to 9*
- Concern about not enough time department head oversight (Seep) *Reduced the number of department heads reporting to standing committees*
- Executive Committee will have too much on its plate (Luck, Severson) *Created 2 “executive-like” standing committees: Finance & Personnel and Rules & Strategic Planning*



Significant Changes

- Having the Board Chair be the Chair of the Finance & Personnel Standing Committee
- Having the Board Vice Chair be the Chair of the Rules & Strategic Planning Standing Committee
- Eliminating the Committee on Committees
- Making the Highway Committee (Public Works Standing Committee) appointed/confirmed rather than elected, per WI statute
- County Board Chair recommends appointments of County Board members to bodies, Administrator recommends appointments of citizens to bodies, both with County Board confirmation (*they collaborate*)

Other Significant Changes

- Joint bodies (Ambulance, Economic Development, Symons) remain independent but report to 1 of 2 “executive-like” Committees
- Chair and Vice Chair to serve on Joint Ambulance Committee
- Advisory and special appointment bodies report to standing committees, when necessary or desired
- Consolidated from 18 to 9 standing committees
- Removed 8 defunct/unnecessary bodies
- Added 4 bodies that were already meeting, but not in County Board structure
- Drafted a process for making appointments at organization meeting in April (instead of waiting until May)

Appointment Process

Rules
Each County Board member holds seats on 3 standing committees
The County Board Chair and Vice Chair are automatically members of the Finance & Personnel and Rules & Strategic Planning Committees
The Chair of each Standing Committee is a member of each Executive Committee (Finance & Personnel; Rules & Strategic Planning)
No person may be chair of more than 1 standing committee
Only a County Board member may be elected as a chair of a standing committee. Citizen members of any standing committee may be present to vote in the election of a standing committee chair.
All initial appointments are made and confirmed at the organizational meeting after the Chair and Vice Chair are elected
Procedure
The Board first elects by secret, formal ballot the members of the Pine Valley & Child Support Standing Committee.
The Pine Valley & Child Support Standing Committee meets to elect a Chair.
The Board Chair then recommends appointment of the County Board members of the remaining 6 non-Executive standing committees, one committee at a time: Education, Fair/Recycling/Parks, HHS & Veterans, Land/Zoning, Public Safety, and Public Works Standing Committees, with County Board confirmation
As each committee is appointed and confirmed, that committee meets to elect a Chair. The Clerk conducts each meeting until a Chair is elected. The Public Safety Standing Committee should recommend - not elect - a Chair appointment to the County Board Chair. The County Board Chair has the statutory authority to declare the Chair of the Public Safety Committee (under its powers to operate as the Emergency Management Committee).
Each committee Chair automatically become a member of the Finance & Personnel and Rules & Strategic Planning Standing Committees
If a supervisor is elected to be Chair of a standing committee and has previously received a non-Executive Standing Committee appointment, that non-Executive appointment is no longer valid and should be recommended for rescindment by the County Board Chair with County Board approval.
After the 7th non-Executive standing committee has elected their Chair, the County Board Chair then recommends appointment of County Board members to the seats vacated by Standing Committee Chairs, subject to County Board confirmation
Any remaining vacant seats are eligible for appointment at a future County Board meeting

Step 8.3 Example Appointment Process

	Finance & Personnel Committee	Rules & Strategic Planning Committee	HHS & Veterans Committee	Pine Valley & Child Support Committee	Public Safety Committee	Education Committee	Land & Zoning Committee	Fair, Recycling, & Parks Committee	Public Works Committee
1	County Board Chair	County Board Vice Chair							
2	County Board Vice Chair	County Board Chair							
3									
4									
5								Citizen H (Fair)	
6								Citizen I (Fair)	
7			Citizen A (HHS)	Citizen F (Pine Valley)			Citizen G (FSA)	Citizen J (Parks)	
8			Citizen B (HHS)					Citizen K (Parks)	
9			Citizen C (HHS)					Citizen L (Parks)	
10			Citizen D (Veterans)					Citizen M (Fair)	
11			Citizen E (Veterans)						
				Chair of Standing Committee					

	Standing Committee A	Standing Committee B	Standing Committee C
Supervisor 1			
Supervisor 2			
Supervisor 3			
Supervisor 4			
Supervisor 5			
Supervisor 6			
Supervisor 7			
Supervisor 8			
Supervisor 9			
Supervisor 10			
Supervisor 11			
Supervisor 12			
Supervisor 13			
Supervisor 14			
Supervisor 15			
Supervisor 16			
Supervisor 17			
Supervisor 18			
Supervisor 19			
Supervisor 20			
Supervisor 21			

Step 8.4 Example 1st Committee

	Finance & Personnel Committee	Rules & Strategic Planning Committee	HHS & Veterans Committee	Pine Valley & Child Support Committee	Public Safety Committee	Education Committee	Land & Zoning Committee	Fair, Recycling, & Parks Committee	Public Works Committee
1	County Board Chair	County Board Vice Chair	Kerry - Elected Chair						
2	County Board Vice Chair	County Board Chair	Ingrid						
3	Kerry	Kerry	Tim						
4			Van						
5			Don					Citizen H (Fair)	
6			Lee					Citizen I (Fair)	
7			Citizen A (HHS)	Citizen F (Pine Valley)			Citizen G (FSA)	Citizen J (Parks)	
8			Citizen B (HHS)					Citizen K (Parks)	
9			Citizen C (HHS)					Citizen L (Parks)	
10			Citizen D (Veterans)					Citizen M (Fair)	
11			Citizen E (Veterans)						
				Chair of Standing Committee					

	Standing Committee A	Standing Committee B	Standing Committee C
Kerry	HHS & Veterans	F&P	Rules & SP
Ingrid	HHS & Veterans		
Tim	HHS & Veterans		
Van	HHS & Veterans		
Don	HHS & Veterans		
Lee	HHS & Veterans		
Supervisor 7			
Supervisor 8			
Supervisor 9			
Supervisor 10			
Supervisor 11			
Supervisor 12			
Supervisor 13			
Supervisor 14			
Supervisor 15			
Supervisor 16			
Supervisor 17			
Supervisor 18			
Supervisor 19			
Supervisor 20			
Supervisor 21			

Step 8.5 Example 2nd Committee

	Finance & Personnel Committee	Rules & Strategic Planning Committee	HHS & Veterans Committee	Pine Valley & Child Support Committee	Public Safety Committee	Education Committee	Land & Zoning Committee	Fair, Recycling, & Parks Committee	Public Works Committee
1	County Board Chair	County Board Vice Chair	Kerry - Elected Chair	Richard - Elected Chair					
2	County Board Vice Chair	County Board Chair	Ingrid	Peg					
3	Kerry	Kerry	Tim	Marty					
4	Richard	Richard	Van	Don					
5			Don	Linda				Citizen H (Fair)	
6			Lee	Dan				Citizen I (Fair)	
7			Citizen A (HHS)	Citizen F (Pine Valley)			Citizen G (FSA)	Citizen J (Parks)	
8			Citizen B (HHS)					Citizen K (Parks)	
9			Citizen C (HHS)					Citizen L (Parks)	
10			Citizen D (Veterans)					Citizen M (Fair)	
11			Citizen E (Veterans)						
				Chair of Standing Committee					

	Standing Committee A	Standing Committee B	Standing Committee C
Kerry	HHS & Veterans	F&P	Rules & SP
Ingrid	HHS & Veterans		
Tim	HHS & Veterans		
Van	HHS & Veterans		
Don	HHS & Veterans	PV & Child Support	
Lee	HHS & Veterans		
Richard	PV & Child Support	F&P	Rules & SP
Peg	PV & Child Support		
Marty	PV & Child Support	F&P	Rules & SP
Linda	PV & Child Support		
Dan	PV & Child Support		
Supervisor 12			
Supervisor 13			
Supervisor 14			
Supervisor 15			
Supervisor 16			
Supervisor 17			
Supervisor 18			
Supervisor 19			
Supervisor 20			
Supervisor 21			

Step 8.6 Example 3rd Committee

	Finance & Personnel Committee	Rules & Strategic Planning Committee	HHS & Veterans Committee	Pine Valley & Child Support Committee	Public Safety Committee	Education Committee	Land & Zoning Committee	Fair, Recycling, & Parks Committee	Public Works Committee
1	County Board Chair	County Board Vice Chair	Kerry - Elected Chair	Richard - Elected Chair	Melissa - Elected Chair				
2	County Board Vice Chair	County Board Chair	Ingrid	Peg	Dave				
3	Kerry	Kerry	Tim	Marty	Chad				
4	Richard	Richard	Van	Don	Bob				
5	Melissa	Melissa	Don	Linda	Marc			Citizen H (Fair)	
6			Lee	Dan	Ingrid			Citizen I (Fair)	
7			Citizen A (HHS)	Citizen F (Pine Valley)	Shaun		Citizen G (FSA)	Citizen J (Parks)	
8			Citizen B (HHS)					Citizen K (Parks)	
9			Citizen C (HHS)					Citizen L (Parks)	
10			Citizen D (Veterans)					Citizen M (Fair)	
11			Citizen E (Veterans)						
				Chair of Standing Committee					

	Standing Committee A	Standing Committee B	Standing Committee C
Kerry	HHS & Veterans	F&P	Rules & SP
Ingrid	HHS & Veterans	Public Safety	
Tim	HHS & Veterans		
Van	HHS & Veterans		
Don	HHS & Veterans	PV & Child Support	
Lee	HHS & Veterans		
Richard	PV & Child Support	F&P	Rules & SP
Peg	PV & Child Support		
Marty	PV & Child Support	F&P	Rules & SP
Linda	PV & Child Support		
Dan	PV & Child Support		
Melissa	Public Safety	F&P	Rules & SP
Dave	Public Safety	F&P	Rules & SP
Chad	Public Safety		
Bob	Public Safety		
Marc	Public Safety		
Shaun	Public Safety		
Supervisor 18			
Supervisor 19			
Supervisor 20			
Supervisor 21			

Step 8.7 Example 4th Committee

	Finance & Personnel Committee	Rules & Strategic Planning Committee	HHS & Veterans Committee	Pine Valley & Child Support Committee	Public Safety Committee	Education Committee	Land & Zoning Committee	Fair, Recycling, & Parks Committee	Public Works Committee
1	County Board Chair	County Board Vice Chair	Kerry - Elected Chair	Richard - Elected Chair	Melissa - Elected Chair	Linda - Elected Chair			
2	County Board Vice Chair	County Board Chair	Ingrid	Peg	Dave	Chad			
3	Kerry	Kerry	Tim	Marty	Chad	Bob			
4	Richard	Richard	Van	Don	Bob	Tim			
5	Melissa	Melissa	Don	Linda	Marc	Lee		Citizen H (Fair)	
6	Linda	Linda	Lee	Dan	Ingrid	Marc		Citizen I (Fair)	
7			Citizen A (HHS)	Citizen F (Pine Valley)	Shaun	Steve W	Citizen G (FSA)	Citizen J (Parks)	
8			Citizen B (HHS)			Van		Citizen K (Parks)	
9			Citizen C (HHS)					Citizen L (Parks)	
10			Citizen D (Veterans)					Citizen M (Fair)	
11			Citizen E (Veterans)						
				Chair of Standing Committee	Lost Seat				

	Standing Committee A	Standing Committee B	Standing Committee C
Kerry	HHS & Veterans	F&P	Rules & SP
Ingrid	HHS & Veterans	Public Safety	
Tim	HHS & Veterans	Education	
Van	HHS & Veterans	Education	
Don	HHS & Veterans	PV & Child Support	
Lee	HHS & Veterans	Education	
Richard	PV & Child Support	F&P	Rules & SP
Peg	PV & Child Support		
Marty	PV & Child Support	F&P	Rules & SP
Linda	Education	F&P	Rules & SP
Dan	PV & Child Support		
Melissa	Public Safety	F&P	Rules & SP
Dave	Public Safety	F&P	Rules & SP
Chad	Public Safety	Education	
Bob	Public Safety	Education	
Marc	Public Safety	Education	
Shaun	Public Safety		
Steve W	Education		
Supervisor 19			
Supervisor 20			
Supervisor 21			

Step 8.8 Example 5th Committee

	Finance & Personnel Committee	Rules & Strategic Planning Committee	HHS & Veterans Committee	Pine Valley & Child Support Committee	Public Safety Committee	Education Committee	Land & Zoning Committee	Fair, Recycling, & Parks Committee	Public Works Committee
1	County Board Chair	County Board Vice Chair	Kerry - Elected Chair	Richard - Elected Chair	Melissa - Elected Chair	Linda - Elected Chair	Steve W - Elected Chair		
2	County Board Vice Chair	County Board Chair	Ingrid	Peg	Dave	Chad	Shaun		
3	Kerry	Kerry	Tim	Marty	Chad	Bob	Bob		
4	Richard	Richard	Van	Don	Bob	Tim	Lee		
5	Melissa	Melissa	Don		Marc	Lee	Ingrid	Citizen H (Fair)	
6	Linda	Linda	Lee	Dan	Ingrid	Marc	Chad	Citizen I (Fair)	
7	Steve W	Steve W	Citizen A (HHS)	Citizen F (Pine Valley)	Shaun	Steve W	Citizen G (FSA)	Citizen J (Parks)	
8			Citizen B (HHS)			Van		Citizen K (Parks)	
9			Citizen C (HHS)					Citizen L (Parks)	
10			Citizen D (Veterans)					Citizen M (Fair)	
11			Citizen E (Veterans)						
Chair of Standing Committee					Lost Seat	Vacated Seat			

	Standing Committee A	Standing Committee B	Standing Committee C
Kerry	HHS & Veterans	F&P	Rules & SP
Ingrid	HHS & Veterans	Public Safety	Land & Zoning
Tim	HHS & Veterans	Education	
Van	HHS & Veterans	Education	
Don	HHS & Veterans	PV & Child Support	
Lee	HHS & Veterans	Education	Land & Zoning
Richard	PV & Child Support	F&P	Rules & SP
Peg	PV & Child Support		
Marty	PV & Child Support	F&P	Rules & SP
Linda	Education	F&P	Rules & SP
Dan	PV & Child Support		
Melissa	Public Safety	F&P	Rules & SP
Dave	Public Safety	F&P	Rules & SP
Chad	Public Safety	Education	Land & Zoning
Bob	Public Safety	Education	Land & Zoning
Marc	Public Safety	Education	
Shaun	Public Safety	Land & Zoning	
Steve	Land & Zoning	F&P	Rules & SP
Supervisor 19			
Supervisor 20			
Supervisor 21			

Step 8.9 Example 6th Committee

	Finance & Personnel Committee	Rules & Strategic Planning Committee	HHS & Veterans Committee	Pine Valley & Child Support Committee	Public Safety Committee	Education Committee	Land & Zoning Committee	Fair, Recycling, & Parks Committee	Public Works Committee
1	County Board Chair	County Board Vice Chair	Kerry - Elected Chair	Richard - Elected Chair	Melissa - Elected Chair	Linda - Elected Chair	Steve W - Elected Chair	Tim - Elected Chair	
2	County Board Vice Chair	County Board Chair	Ingrid	Peg	Dave	Chad	Shaun	Danielle	
3	Kerry	Kerry	Tim	Marty	Chad	Bob	Bob	Peg	
4	Richard	Richard	Van	Don	Bob	Tim	Lee	Van	
5	Melissa	Melissa	Don		Marc	Lee	Ingrid	Citizen H (Fair)	
6	Linda	Linda	Lee	Dan	Ingrid	Marc	Chad	Citizen I (Fair)	
7	Steve W	Steve W	Citizen A (HHS)	Citizen F (Pine Valley)	Shaun		Citizen G (FSA)	Citizen J (Parks)	
8	Tim	Tim	Citizen B (HHS)			Van		Citizen K (Parks)	
9			Citizen C (HHS)					Citizen L (Parks)	
10			Citizen D (Veterans)					Citizen M (Fair)	
11			Citizen E (Veterans)						
				Chair of Standing Committee	Lost Seat	Vacated Seat			

	Standing Committee A	Standing Committee B	Standing Committee C
Kerry	HHS & Veterans	F&P	Rules & SP
Ingrid	HHS & Veterans	Public Safety	Land & Zoning
Tim	Fair, Recycling, & Parks	F&P	Rules & SP
Van	HHS & Veterans	Education	Fair, Recycling, & Parks
Don	HHS & Veterans	PV & Child Support	
Lee	HHS & Veterans	Education	Land & Zoning
Richard	PV & Child Support	F&P	Rules & SP
Peg	PV & Child Support	Fair, Recycling, & Parks	
Marty	PV & Child Support	F&P	Rules & SP
Linda	Education	F&P	Rules & SP
Dan	PV & Child Support		
Melissa	Public Safety	F&P	Rules & SP
Dave	Public Safety	F&P	Rules & SP
Chad	Public Safety	Education	Land & Zoning
Bob	Public Safety	Education	Land & Zoning
Marc	Public Safety	Education	
Shaun	Public Safety	Land & Zoning	
Steve	Land & Zoning	F&P	Rules & SP
Danielle	Fair, Recycling, & Parks		

Step 8.10 Example 7th Committee

	Finance & Personnel Committee	Rules & Strategic Planning Committee	HHS & Veterans Committee	Pine Valley & Child Support Committee	Public Safety Committee	Education Committee	Land & Zoning Committee	Fair, Recycling, & Parks Committee	Public Works Committee
1	County Board Chair	County Board Vice Chair	Kerry - Elected Chair	Richard - Elected Chair	Melissa - Elected Chair	Linda - Elected Chair	Steve W - Elected Chair	Tim - Elected Chair	Gary - Elected Chair
2	County Board Vice Chair	County Board Chair	Ingrid	Peg	Dave	Chad	Shaun	Danielle	Steve C
3	Kerry	Kerry		Marty	Chad	Bob	Bob	Peg	Don
4	Richard	Richard	Van	Don	Bob		Lee	Van	Peg
5	Melissa	Melissa	Don		Marc	Lee	Ingrid	Citizen H (Fair)	Dan
6	Linda	Linda	Lee	Dan	Ingrid	Marc	Chad	Citizen I (Fair)	Marc
7	Steve W	Steve W	Citizen A (HHS)	Citizen F (Pine Valley)	Shaun		Citizen G (FSA)	Citizen J (Parks)	Shaun
8	Tim	Tim	Citizen B (HHS)			Van		Citizen K (Parks)	Danielle
9	Gary	Gary	Citizen C (HHS)					Citizen L (Parks)	
10			Citizen D (Veterans)					Citizen M (Fair)	
11			Citizen E (Veterans)						
				Chair of Standing Committee	Lost Seat	Vacated Seat			

	Standing Committee A	Standing Committee B	Standing Committee C
Kerry	HHS & Veterans	F&P	Rules & SP
Ingrid	HHS & Veterans	Public Safety	Land & Zoning
Tim	Fair, Recycling, & Parks	F&P	Rules & SP
Van	HHS & Veterans	Education	Fair, Recycling, & Parks
Don	HHS & Veterans	PV & Child Support	Public Works
Lee	HHS & Veterans	Education	Land & Zoning
Richard	PV & Child Support	F&P	Rules & SP
Peg	PV & Child Support	Fair, Recycling, & Parks	Public Works
Marty	PV & Child Support	F&P	Rules & SP
Linda	Education	F&P	Rules & SP
Dan	PV & Child Support	Public Works	
Melissa	Public Safety	F&P	Rules & SP
Dave	Public Safety	F&P	Rules & SP
Chad	Public Safety	Education	Land & Zoning
Bob	Public Safety	Education	Land & Zoning
Marc	Public Safety	Education	Public Works
Shaun	Public Safety	Land & Zoning	Public Works
Steve W	Land & Zoning	F&P	Rules & SP
Danielle	Fair, Recycling, & Parks	Public Works	
Gary	Public Works	F&P	Rules & SP
Steve C	Public Works		

Step 8.11 Example Final Appointments

	Finance & Personnel Committee	Rules & Strategic Planning Committee	HHS & Veterans Committee	Pine Valley & Child Support Committee	Public Safety Committee	Education Committee	Land & Zoning Committee	Fair, Recycling, & Parks Committee	Public Works Committee
1	County Board Chair	County Board Vice Chair	Kerry - Elected Chair	Richard - Elected Chair	Melissa - Elected Chair	Linda - Elected Chair	Steve W - Elected Chair	Tim - Elected Chair	Gary - Elected Chair
2	County Board Vice Chair	County Board Chair	Ingrid	Peg	Dave	Chad	Shaun	Danielle	Steve C
3	Kerry	Kerry	Steve C	Marty	Chad	Bob	Bob	Peg	Don
4	Richard	Richard	Van	Don	Bob	Danielle	Lee	Van	Peg
5	Melissa	Melissa	Don	Steve C	Marc	Lee	Ingrid	Citizen H (Fair)	Dan
6	Linda	Linda	Lee	Dan	Ingrid	Marc	Chad	Citizen I (Fair)	Marc
7	Steve	Steve	Citizen A (HHS)	Citizen F (Pine Valley)	Shaun	Dan	Citizen G (FSA)	Citizen J (Parks)	Shaun
8	Tim	Tim	Citizen B (HHS)			Van		Citizen K (Parks)	Danielle
9	Gary	Gary	Citizen C (HHS)					Citizen L (Parks)	
10			Citizen D (Veterans)					Citizen M (Fair)	
11			Citizen E (Veterans)						
				Chair of Standing Committee	Lost Seat	Vacated Seat			

	Standing Committee A	Standing Committee B	Standing Committee C
Kerry	HHS & Veterans	F&P	Rules & SP
Ingrid	HHS & Veterans	Public Safety	Land & Zoning
Tim	Fair, Recycling, & Parks	F&P	Rules & SP
Van	HHS & Veterans	Education	Fair, Recycling, & Parks
Don	HHS & Veterans	PV & Child Support	Public Works
Lee	HHS & Veterans	Education	Land & Zoning
Richard	PV & Child Support	F&P	Rules & SP
Peg	PV & Child Support	Fair, Recycling, & Parks	Public Works
Marty	PV & Child Support	F&P	Rules & SP
Linda	Education	F&P	Rules & SP
Dan	PV & Child Support	Public Works	Education
Melissa	Public Safety	F&P	Rules & SP
Dave	Public Safety	F&P	Rules & SP
Chad	Public Safety	Education	Land & Zoning
Bob	Public Safety	Education	Land & Zoning
Marc	Public Safety	Education	Public Works
Shaun	Public Safety	Land & Zoning	Public Works
Steve W	Land & Zoning	F&P	Rules & SP
Danielle	Fair, Recycling, & Parks	Public Works	Education
Gary	Public Works	F&P	Rules & SP
Steve C	Public Works	HHS & Veterans	PV & Child Support

Questions? Feedback?

Rules & Resolutions Committee Membership

- Chad Cosgrove
- Melissa Luck
- Shaun Murphy-Lopez
- Don Seep
- Kerry Severson